



Price
£725,000

Freehold

4x  2x  3x 

**Cromwell Avenue,
Billericay, Essex, CM12**

OVER 60?

Secure this property
for up to **59% less!**

 **DOUGLAS
ALLEN**
Helping you move forwards



Main features

- Large frontage with parking for multiple cars
- Modern kitchen/diner with bifold doors leading to the rear garden
- separate lounge
- Four good sized bedrooms
- Walking distance to Billericay High Street and Train Station

Accommodation

GROUND FLOOR

Hallway : 10'3 x 7'1 (3.13m x 2.16m)
 Kitchen : 15'8 x 10'3 (4.78m x 3.13m)
 Study : 10'4 x 8'5 (3.15m x 2.57m)
 Lounge : 18'7 x 11'8 (5.67m x 3.56m)
 Cloakroom

FIRST FLOOR

Landing
 Bedroom 2: 12'5 x 11'9 (3.79m x 3.58m)
 Bedroom 4: 11'6 x 8'5 (3.51m x 2.57m)
 Bathroom
 Bedroom 3: 11'6 x 9'6 (3.51m x 2.90m)
 Bedroom 1: 11'4 x 11'3 (3.46m x 3.43m)
 En-suite to bedroom 1

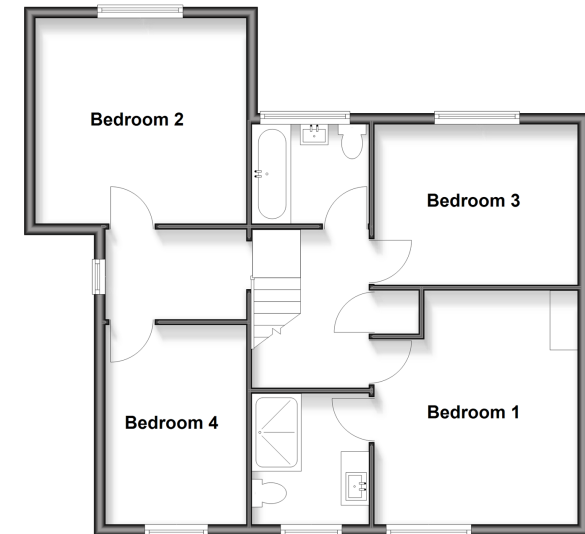
OUTSIDE

Rear Garden
 Driveway

Ground Floor
 Approx. 84.0 sq. metres (904.6 sq. feet)



First Floor
 Approx. 70.2 sq. metres (755.7 sq. feet)



Call Billericay - 01277 631377 ■ douglasallen.co.uk

- If buying to rent, please check if Local Authority licensing schemes apply before proceeding
- Through a Homewise Home For Life Plan people aged 60+ can secure this property for up to 59% less, by purchasing a Lifetime Lease



50313253/20260613/KM/OG