



Plot 19, OMAR Regency, Near Shepton Mallet, Somerset, BA4

£159,950

🛏️ 2 🚿 2 🚗 1



- Brand New Two Bedroom Park Home
- 40'x20' Home
- Kitchen With Integrated Appliances
- Two Parking Spaces
- Garden Areas To All Sides
- OMAR 'Regency' Design
- Park Has a 12 Month/365 Day Licence
- Ensuite and Walk-in Wardrobe
- A Limited Number of Show Homes Available
- Available to View and Buy NOW!

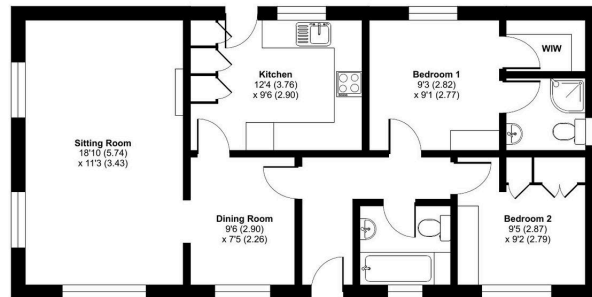


A brand new two double bedroom (40'x20') stunning park home bungalow located on this newly developed, gated development close to Shepton Mallett in Somerset with a 12 month/365 day leisure licence. Boasting countryside views this select development of 25 brand new homes and lodges this 'Regency' show home built by OMAR Park Homes offers spacious and modern accommodation which must be viewed to be appreciated. The home offers a modern kitchen with integrated appliances, a spacious lounge an separate dining room, an ensuite and walk-in wardrobe to the master bedroom, a further guest bathroom, double glazing, gas central heating as well as garden areas to all sides of the home and two parking spaces next to the home.



Cannards Grave, Shepton Mallet, BA4

Approximate Area = 763 sq ft / 70.9 sq m
For identification only - Not to scale



GROUND FLOOR



Floor plan produced in accordance with RICS Property Measurement Standards incorporating International Property Measurement Standards (IPMS Residential). ©indream 2024. Produced for The Park Home Agency Ltd. REF: 1164601



01793 230185

sales@theparkhomeagency.co.uk

Agents Notes: All measurements are approximate and quoted in metric with imperial equivalents and for general guidance only and whilst every attempt has been made to ensure accuracy, they must not be relied on. The fixtures, fittings and appliances referred to have not been tested and therefore no guarantee can be given that they are in working order. Internal photographs are reproduced for general information and it must not be inferred that any item shown is included with the property. For a free valuation, contact the numbers listed on the brochure