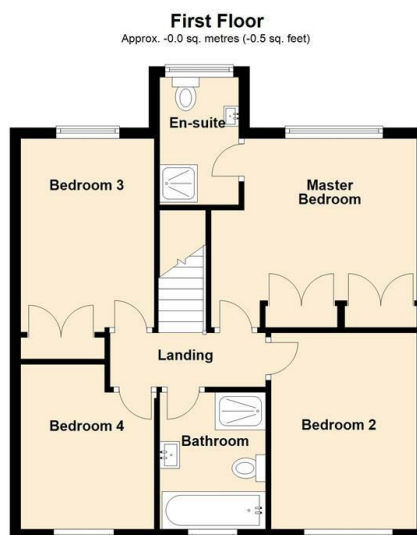
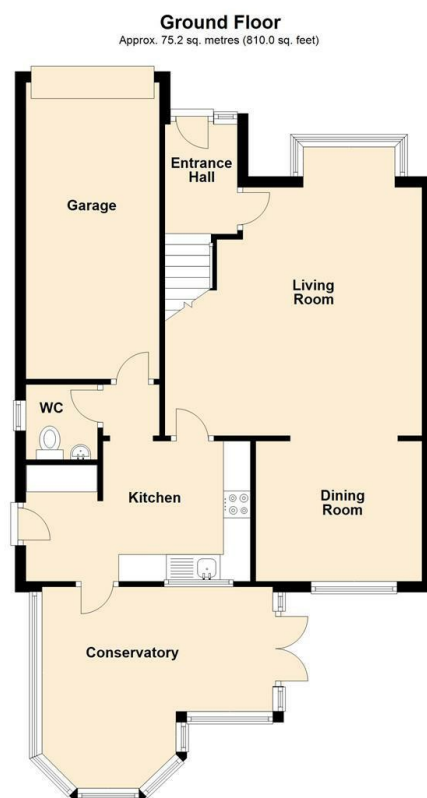




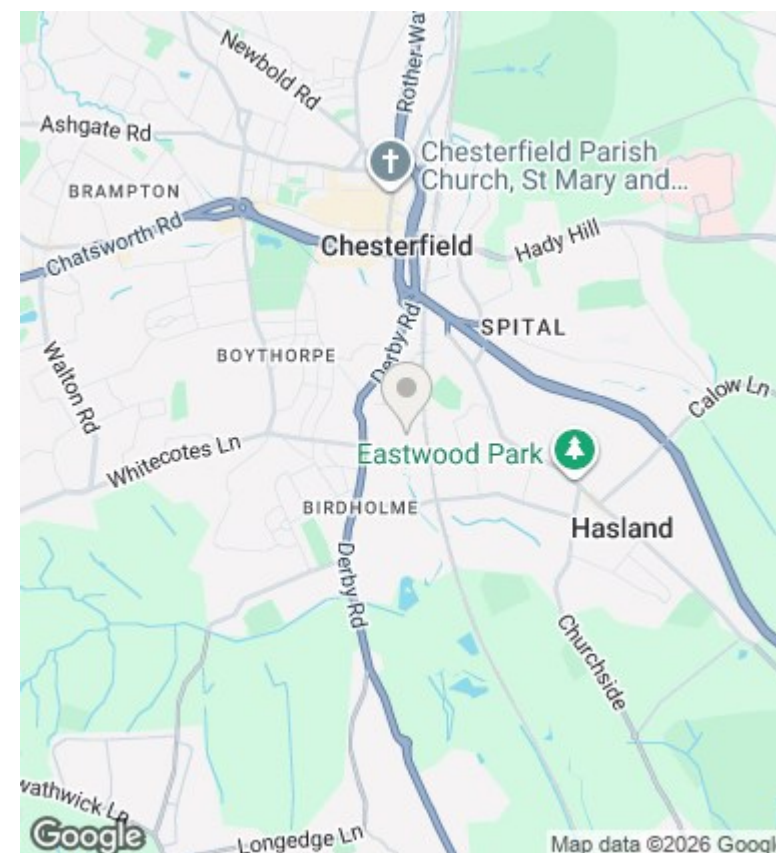
# 19 Skeldale Drive, Chesterfield, Derbyshire, S40 2UW

Offers In The Region Of £335,000

- Detached Family Residence
- Stylish and Contemporary Kitchen
- Popular And Convenient Location
- Garage and Off Road Parking
- 4 Double Bedrooms
- Refitted Family Bathroom And En-Suite
- Gas Fired Central Heating
- Superbly Presented Throughout
- Large Conservatory
- uPVC Double Glazed



Total area: approx. 75.2 sq. metres (809.4 sq. feet)



## Directions

## Viewings

Viewings by arrangement only. Call 0114 283 4050 to make an appointment.

## Council Tax Band

B

## EPC Rating:

C

Energy Efficiency Rating		
	Current	Potential
Very energy efficient - lower running costs		
(92 plus) <b>A</b>		
(81-91) <b>B</b>		82
(69-80) <b>C</b>	70	
(55-68) <b>D</b>		
(39-54) <b>E</b>		
(21-38) <b>F</b>		
(1-20) <b>G</b>		
Not energy efficient - higher running costs		
<b>England &amp; Wales</b>	EU Directive 2002/91/EC	