

Castles

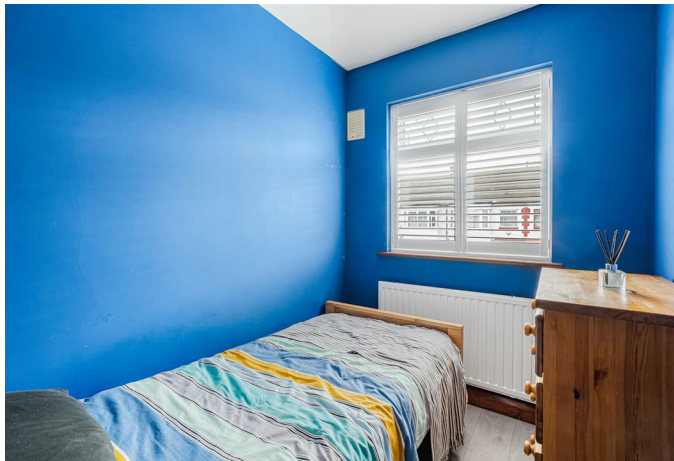


OFFERS IN EXCESS OF
£439,950
Penfold Road
London, N9 8EH

PROPERTY SUMMARY

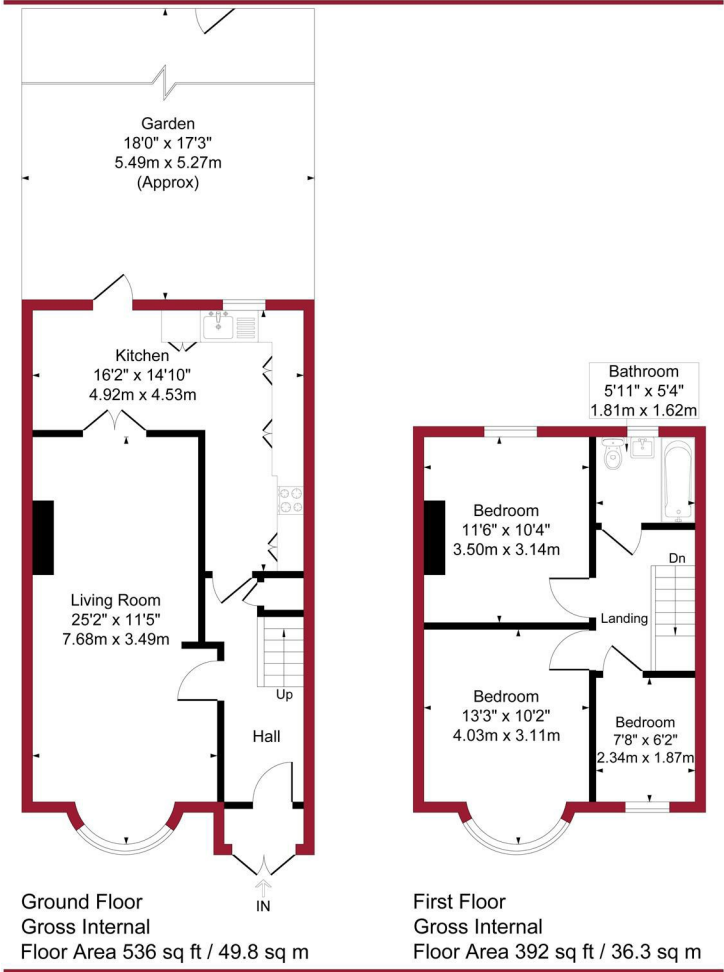
In our opinion a well presented Three bedroom extended 1930's Terraced property situated on this cul de sac on the Nightingale Estate. The property comprises of Reception and L shape kitchen to ground floor with a further three bedrooms and bathroom to first floor. It also has features to include, 18ft rear garden, off street parking, gas central heating and double glazing.



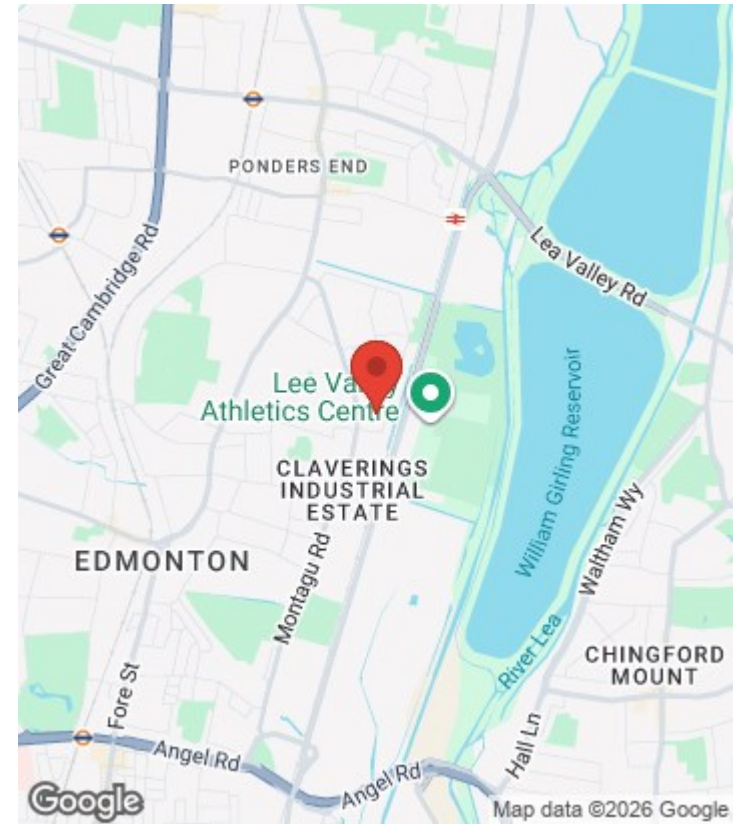
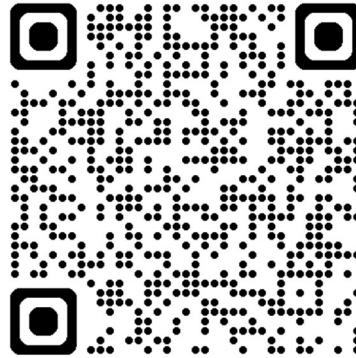


Penfold Road, London, N9

Approximate Gross Internal Area = 928 sq ft / 86.1 sq m



For a guide to the area please scan this code for more information



House
Freehold
Council: Enfield
Council Tax Band: D

Agents Note: Whilst every care has been taken to prepare these particulars, they are for guidance purposes only. All measurements are approximate and are for general guidance purposes only and whilst every care has been taken to ensure their accuracy, they should not be relied upon and potential buyers/tenants are advised to recheck the measurements



OFFICE ADDRESS

438 Hertford Road
Edmonton
London
N9 8AB

OFFICE DETAILS

020 8804 8123
edmonton@castles.london
<https://www.castles.london/>

