



Arbour Square, E1

£2,700 Per calendar month

A three double bedroom property in Stepney Green available to let. The flat has wood flooring throughout and is ideal for sharers or a family looking to be close to the City.

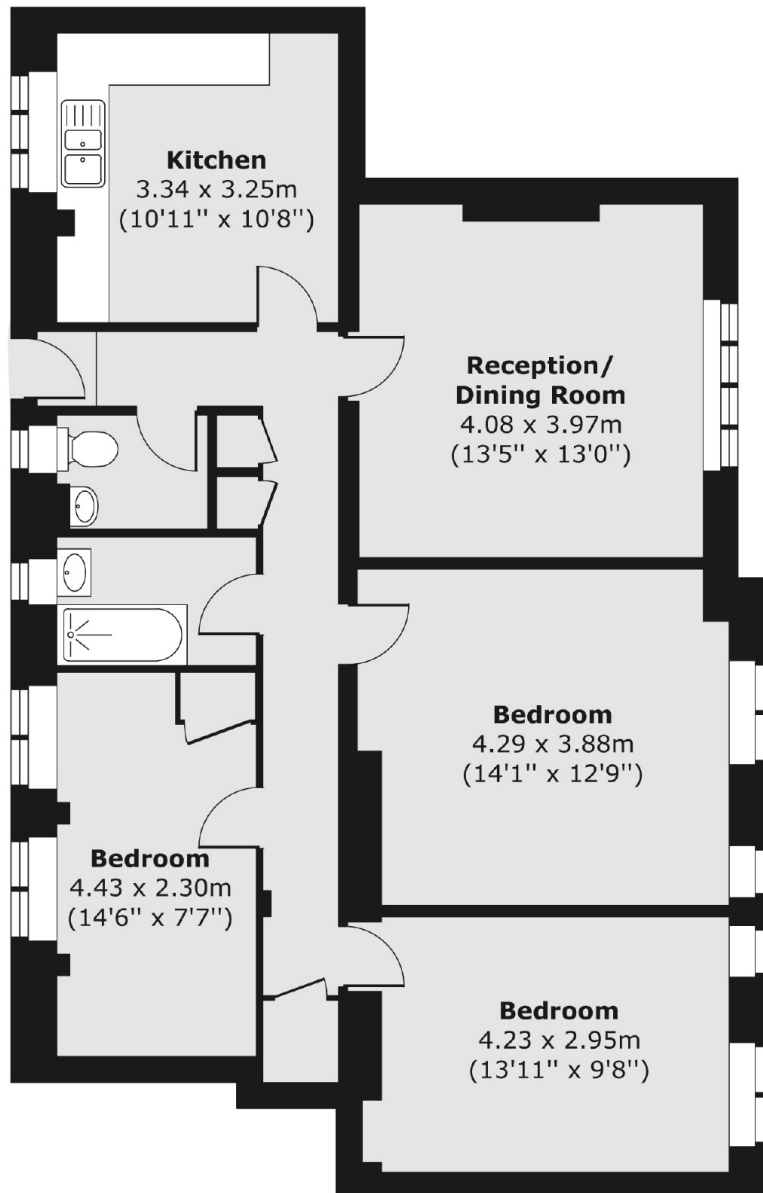
Arbour House is set just by Arbour Square and is located under half a mile from Limehouse Station and just over half a mile from Whitechapel and Stepney Green Underground Stations.

Features

- Three Double Bedrooms
- Additional WC
- Separate Kitchen
- Wood Flooring
- Communal Garden
- Stepney Green

Arbour Square, London, E1

Third Floor



Total area (approx.) 87.33 sq. m (940 sq. ft)