



2 Bedrooms | 1 Bathroom | 2 Reception Rooms
Hamsey Green Gardens | Warlingham | CR6 9RS
£400,000

LOFT

Hamsey Green Gardens | Warlingham | CR6 9RS £400,000

- Spacious mid-terrace home with double driveway
- Through lounge/diner with open plan kitchen space
- Double doors leading to the vast rear garden
- Two double bedrooms to the first floor
- Modern fully tiled bathroom with walk-in shower
- Only a 15 minute walk from the sought after Warlingham Green, with plenty of shops, restaurants and pubs
- Plenty of green spaces surrounding, including Hamsey Green, and great schools close by

Ground Floor

Hallway

Reception

Room/Kitchen

26'2 x 15'0 (7.98m x 4.57m)

First Floor

Landing

Bedroom

15'0 x 10'3 (4.57m x 3.12m)

Bedroom

10'3 x 9'3 (3.12m x 2.82m)

Bathroom

Outside

Driveway

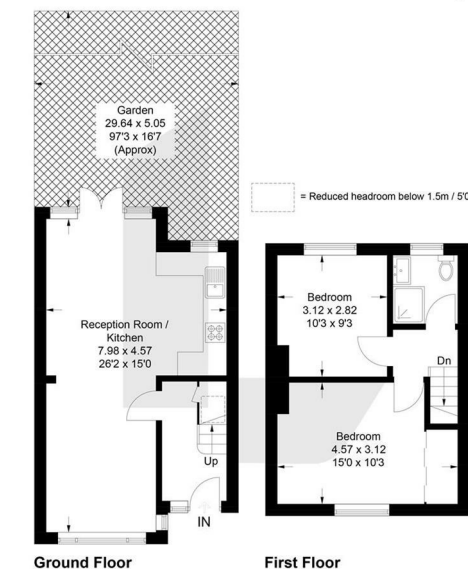
Rear Garden

97'3 x 16'7 (29.64m x 5.05m)

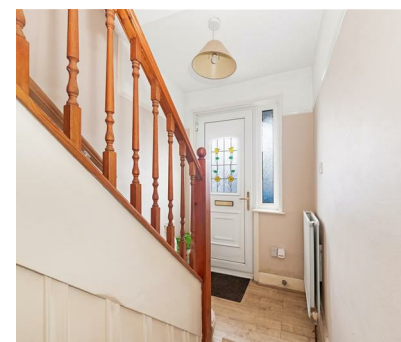


Hamsey Green Gardens, CR6

Approximate Gross Internal Area = 63.3 sq m / 681 sq ft



This plan is for layout guidance only. Not drawn to scale unless stated. Windows and door openings are approximate. Whilst every care is taken in the preparation of this plan, please check all dimensions, shapes and compass bearings before making any decisions reliant upon them. (D1264480)



EPC Rating: C

23a High Street
Purley
Surrey
CR8 2AF
0208 660 8070
hello@loft-estates.co.uk