



Victoria Rise, SW4

£595,000

Dexters



Victoria Rise, SW4

A well presented three bedroom top floor apartment on Victoria Rise. The apartment has been recently renovated and offers a stylish, contemporary finish throughout. The modern kitchen, complete with a breakfast bar, opens into a bright reception area with wood flooring, creating a sociable open-plan living space. There are also three well proportioned double bedrooms, each benefiting from excellent storage. The property also benefits from a share of the freehold and will be sold chain free.

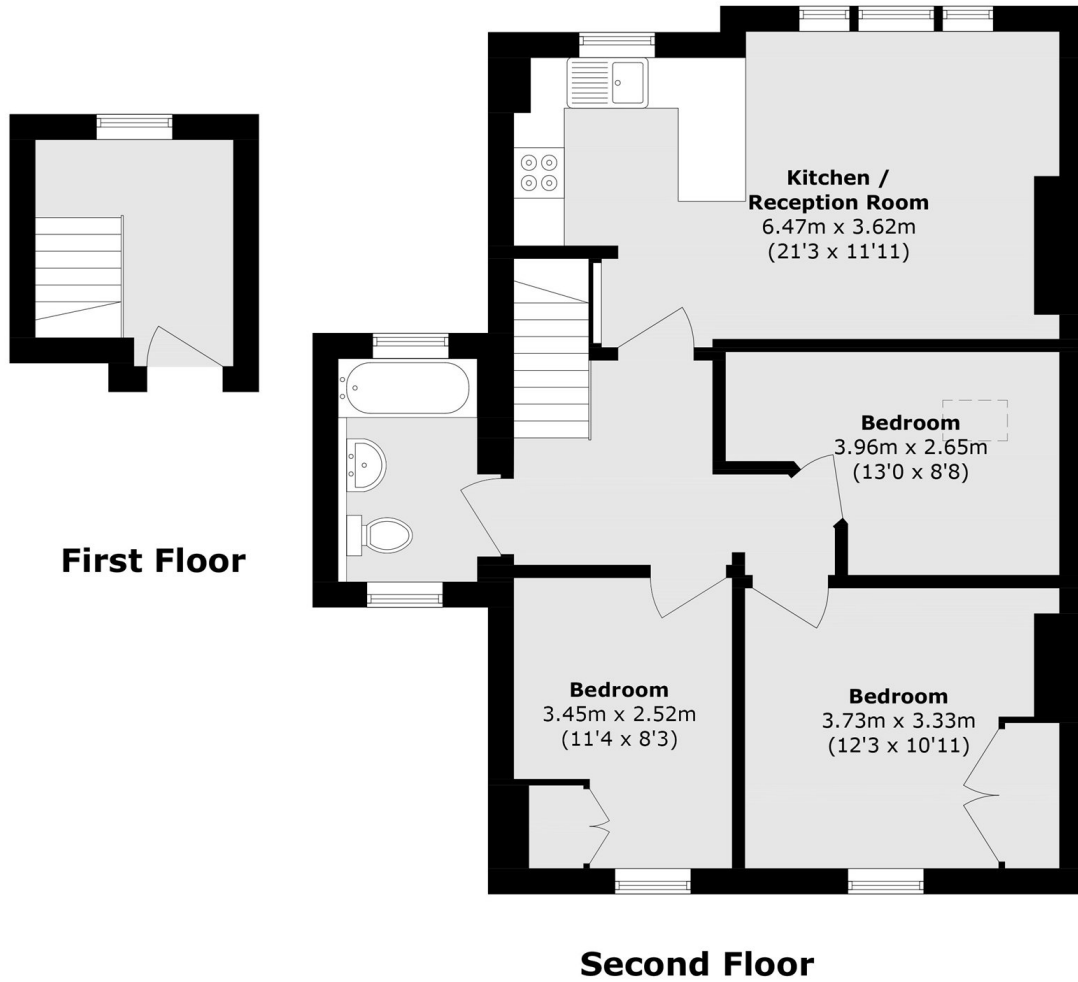
The property is ideally located close to the amenities, restaurants and cafés of Clapham Old Town and Clapham High Street, as well as the green open spaces of Clapham Common. It also offers convenient access to Clapham Junction and Central London. Transport links are excellent, with Clapham Common Underground Station (Northern Line) and Wandsworth Road Rail Station both nearby. Clapham Junction is also within easy reach, and there are a number of useful bus routes along Wandsworth Road.

Features

- Chain Free
- Three Bedroom
- Top Floor
- Share of Freehold



Victoria Rise, London, SW4



Total area (approx.): 74.8 sq. m (805.1 sq. ft)