







🛏️ 1 Bedrooms | 🛋️ 1 Receptions | 🚿 1 Bathrooms | 📊 EPC Current C

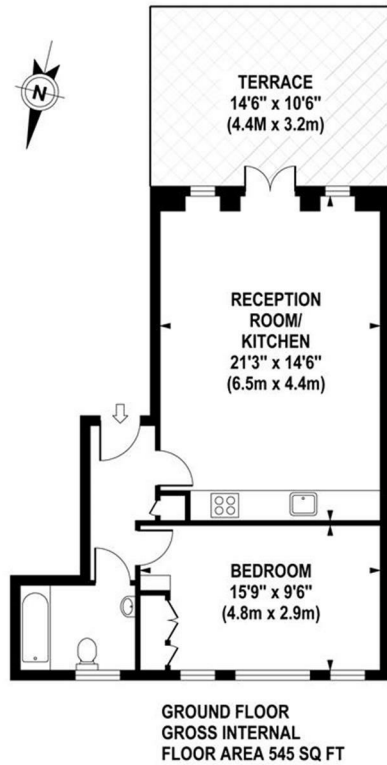
Helliwell & Co. are delighted to present this well presented and modern, one double bedroom ground floor apartment, which is offered to the market furnished or unfurnished and benefits from a private patio. The property has a bright and spacious reception room with a modern fully fitted kitchen, a spacious bathroom and a double bedroom with built in storage. Further benefits include an entry phone system, a high quality of furniture and off street parking (negotiable).

Walpole Court is ideally located for access to Ealing Broadway's tube station (Central, District, Elizabeth and Mainline) and popular shopping centre, as well as multiple local shops, cafes and restaurants Ealing has to offer. The charming open spaces of Lammas and Walpole Parks are also close by, as well as the prestigious Dickens Yard and Filmworks developments.

- Ground Floor Apartment
- Double Bedroom with Storage
- Private Patio
- Holding Deposit (1 weeks rent): £484.00
- Council Tax Band D
- Sought After Development
- Spacious Open Plan Living
- Offered Furnished or Unfurnished
- Security Deposit (5 weeks rent): £2,423.07
- Long Let (12-24 months+)

WALPOLE COURT

Approximate Gross Internal Area 545 sq ft / 50.6 sq m



Although every attempt has been made to ensure accuracy, all measurements are approximate. The floor plan's for illustrative purposes only and not to scale. Measured in accordance to RICS standards.
DE-PHOTOGRAPHY.NET

