



Lesbourne Road RH2

£550,000

“At Stone, we’re passionate about the unique and awe-inspiring architectural elements that transform houses into dream homes.”

————— *The Stone Family*



Lesbourne Road, where Victorian charm meets modern comfort in this elegant terraced house. Nestled within the historic streets of Reigate, Surrey, this three-bedroom abode exudes character and warmth at every turn.

Step inside, and you're greeted by a cozy living room adorned with a prettily tiled period fireplace, perfect for gathering with loved ones on chilly evenings. Adjacent is the dining room, featuring its own charming fireplace, creating a focal point for intimate dinners or lively gatherings with friends.

The kitchen, is a blend of functionality and style, offering ample space for culinary endeavors and casual dining. From here, outside access leads out to the courtyard garden, an idyllic retreat for al fresco dining and socialising. Whether sipping morning coffee or hosting summer barbecues, this outdoor oasis provides a tranquil escape from the hustle and bustle of everyday life.

Upstairs, three well-appointed bedrooms await, each offering a peaceful sanctuary for rest and relaxation. With ample natural light and thoughtful design touches, these rooms provide a harmonious balance of comfort and style.

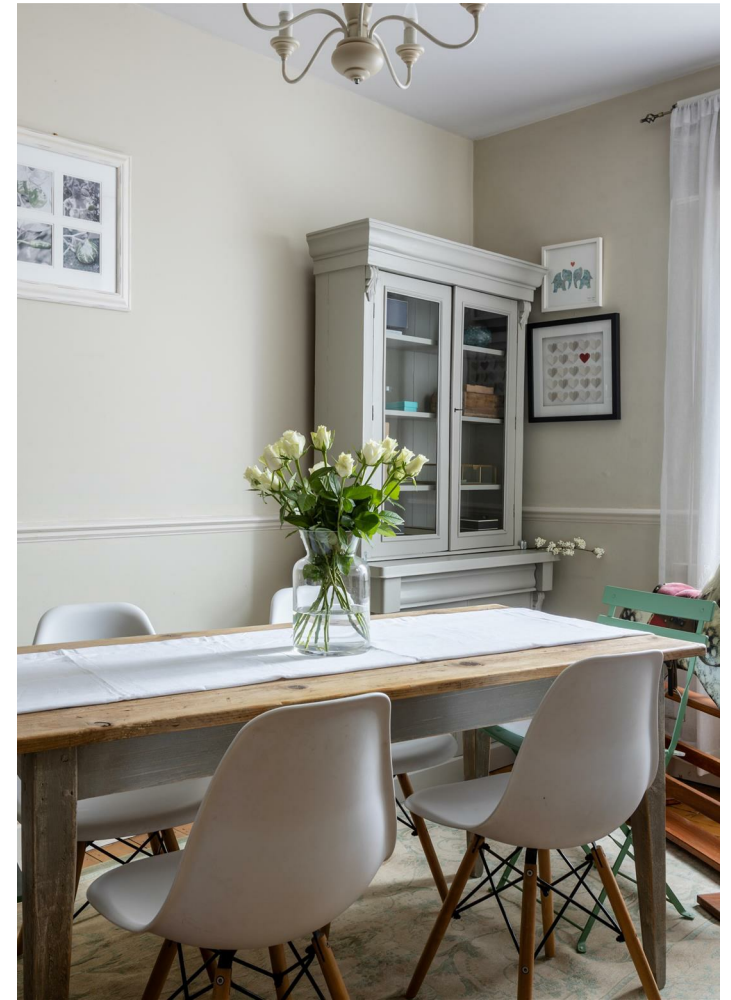
This home also offers potential to extend further in to the loft space subject to the relevant permissions.

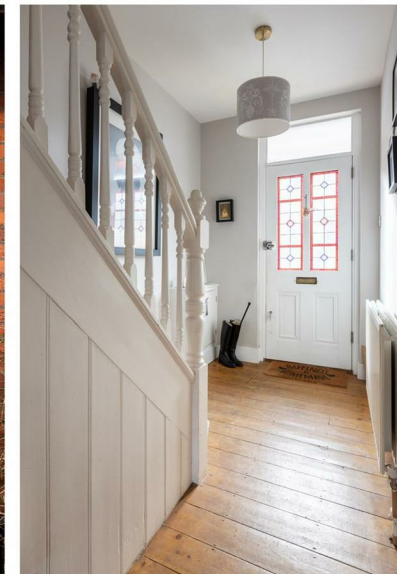


As you approach the property, your eyes are drawn to the inviting front door adorned with stained glass, a testament to the craftsmanship of yesteryears. The exterior facade boasts a classic combination of brick on the bottom half and white render above, evoking a sense of timeless elegance. Enclosed within a gated entrance with a protective wall, the house offers both security and privacy for its occupants.

This Victorian terraced house on Lesbourne Road offers a quintessential slice of Reigate living, blending period features with modern amenities to create a truly enchanting home. From its charming facade to its inviting interior spaces and delightful courtyard garden, this property encapsulates the timeless allure of Victorian architecture while meeting the needs of contemporary living.







Living on Lesbourne Road in Reigate, Surrey offers a charming mix of residential tranquility and urban convenience. The road itself is lined with picturesque houses, many of which boast elegant architecture and well-manicured gardens, adding to the area's aesthetic appeal.

Whether you're in need of everyday essentials or looking for a cosy spot to grab a coffee or meal, you'll find plenty of options within walking distance. Sat on the edge of Reigate's historic market town charm, combined with its vibrant cultural scene, beautiful surroundings, and strong sense of community, make it a truly special place to visit, live, and explore.

Reigate is serviced by a railway line, with direct trains to London Victoria and London Bridge. The town is conveniently located near the M25 motorway, providing quick access to London and the wider motorway network. The M23 is also nearby, offering a direct route to Gatwick Airport and the south coast.

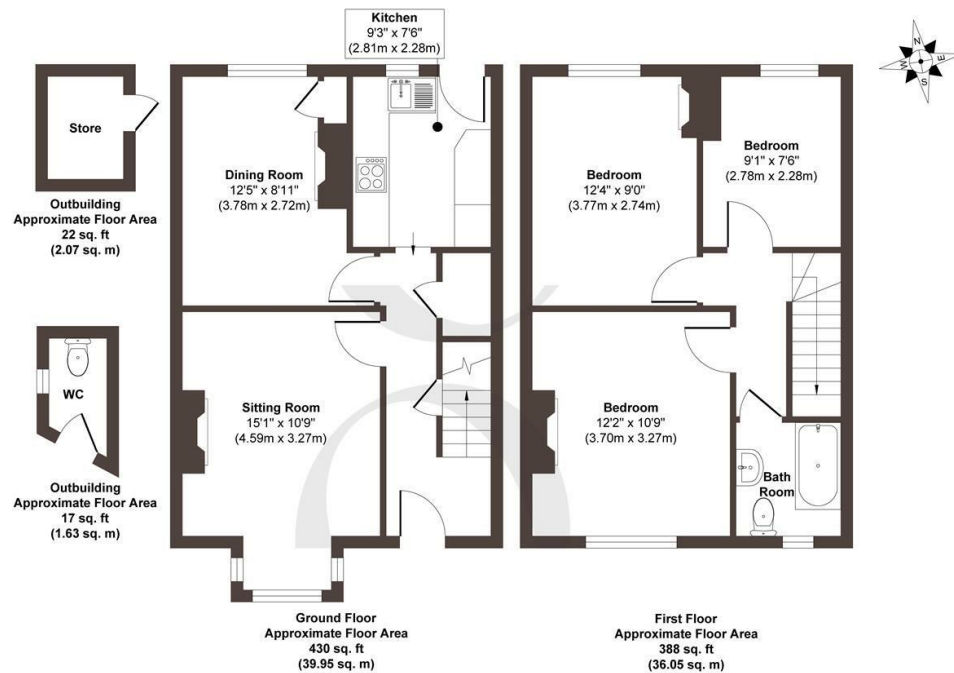






The Details

- Guide Price £550,000 – £575,000
- A stone's throw from amenities and independent businesses, including local's favourite, Nixon
- Beautiful, design-led interiors that sympathetically align with it's period features
- Three generous bedrooms and first floor bathroom
- The modern bathroom combines with a heritage style that creates a spa-like retreat
- Two generous receptions, each with a beautiful Victorian fireplace
- Courtyard garden



Approx. Gross Internal Floor Area 818 sq. ft / 76.00 sq. m (Excluding Outbuilding)

Approx. Gross Internal Floor Area 858 sq. ft / 79.70 sq. m (Including Outbuilding)

Illustration for identification purposes only, measurements are approximate, not to scale.

Produced by Elements Property

STONE

Energy Performance Certificate (EPC)

Band D

Council Tax Band

D



STONE

Let's Talk

01737 301 557

hello@stoneestateagents.co.uk

stoneestateagents.co.uk

The particulars above are a guide, not an offer or contract. Descriptions photographs and plans are not statements or representations of fact. Measurements are approximate and not to scale. Prospective purchasers must verify the accuracy of the information within the particulars. Stone does not give any representations or warranties; nor represent the Seller legally. Stone has no liability, for any costs, losses or expenses incurred by the Seller or a prospective buyer relating to the sales and buying transaction. Our Sales Disclaimer, trading names and privacy policy on how your data is processed and used is found in full on our website in our Privacy Statement.

© Stone Estate Agents 2023 All rights Reserved