

Balmore Street, N19

£700,000

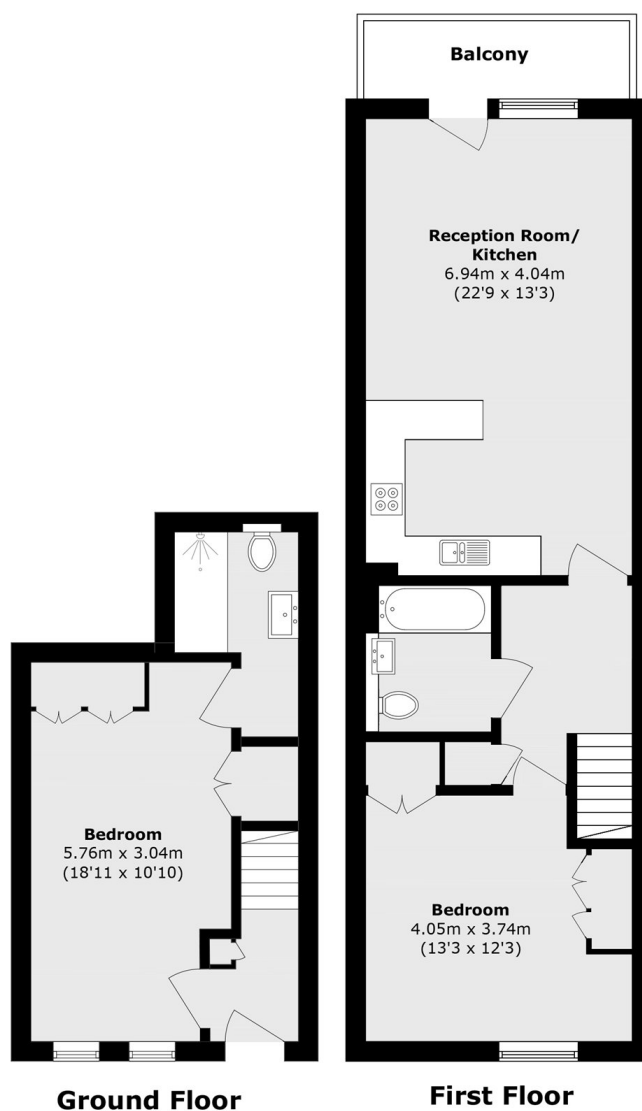
A generously sized split-level two bedroom apartment set within a modern block. The apartment has an open plan reception room and kitchen, a private balcony, wooden flooring and plenty of natural light throughout.

Balmore Street is within easy reach of the local independent shops and cafés on Swains Lane, Highgate Village, and the green open spaces of both Hampstead Heath and Waterlow Park.

Features

- Two Bedrooms
- Two Bathrooms
- Balcony
- Leasehold
- Modern Development
- Open Plan Living

Baltimore Street, London, N19



Total area (approx.): 83.8 sq. m (902.0 sq. ft)

Balcony area (approx.): 4.8 sq. m (51.6 sq. ft)