



Chimney Pots

ESTATE AGENTS

• YOUR HOME • OUR PASSION

Grovebury, Locks Heath, Southampton

Asking Price £875,000





A beautifully presented detached family home

Lounge with focal fireplace

Two further reception rooms

Spacious kitchen/breakfast room

Five bedrooms, en-suite and family bathroom

Enclosed rear garden

Double garage and ample off road parking

Located in a highly desirable cul de sac within close proximity of the centre



Situated in the sought after area of Locks Heath, this impressive five bedroom detached family home provides generous and versatile living space, complemented by three well proportioned reception rooms. Positioned on Grovebury, it offers convenient access to local amenities and excellent transport links.

A bright and welcoming hallway sets the tone on arrival. The main living room features a fireplace and wide sliding doors opening directly onto the garden, creating a light, airy atmosphere. Beside it sits a cosy second reception room, ideal as a study or snug, while the third reception room functions perfectly as a formal dining space for entertaining.

The kitchen is thoughtfully designed with modern appliances, extensive worktop space and a dedicated breakfast area. From here, a door leads out to the enclosed, well kept garden—an inviting and secure space for children and outdoor enjoyment.

Upstairs, the property offers five bedrooms, including a principal bedroom with its own ensuite. The remaining bedrooms are served by a contemporary family bathroom.

Outside, the home benefits from a double garage and a driveway accommodating multiple vehicles. Mature trees and established planting frame the garden, ensuring privacy and a pleasant outlook.

Locks Heath provides an excellent range of amenities, including shops, schools and leisure facilities, along with strong public transport connections to Southampton and neighbouring areas.

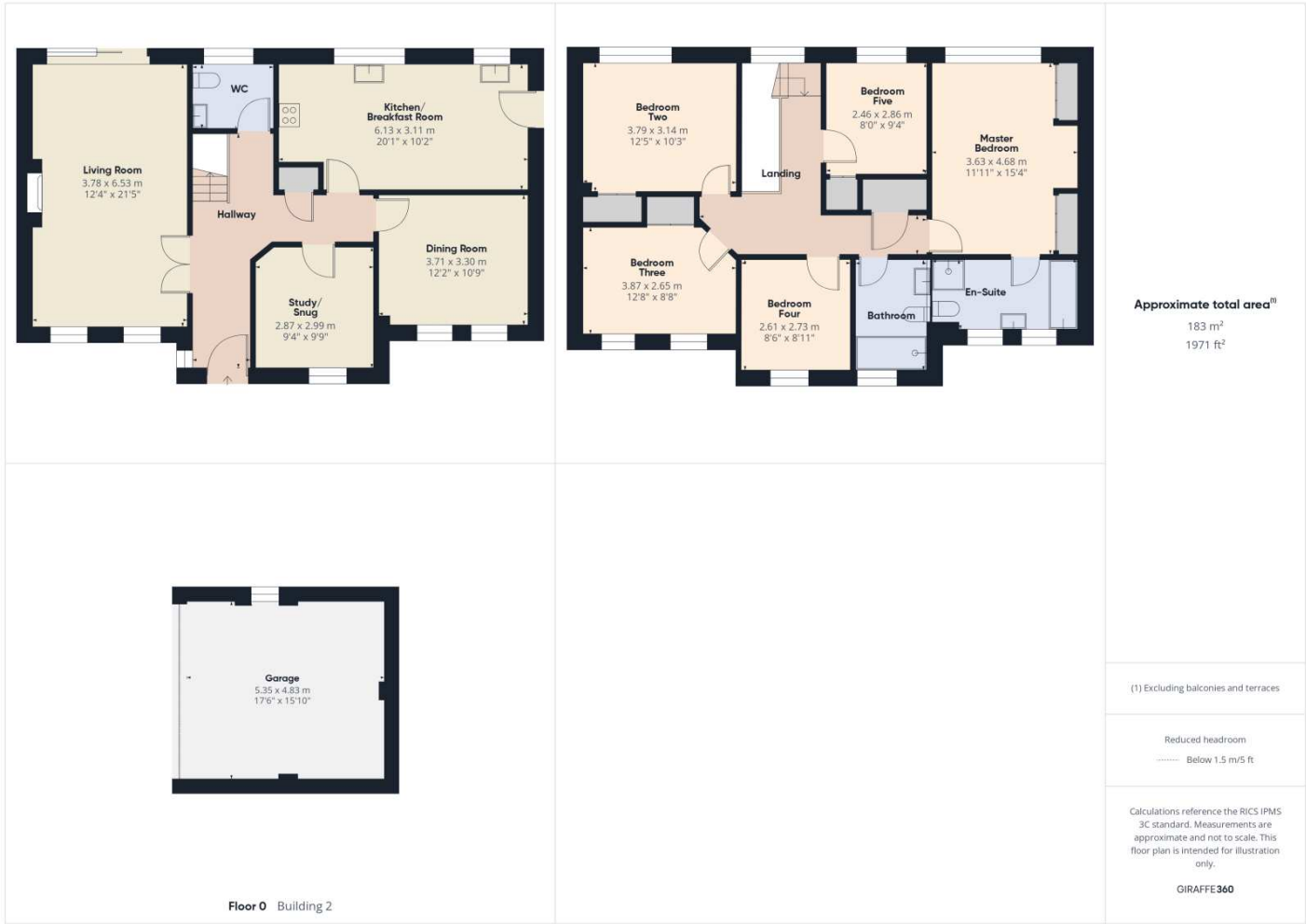
Combining spacious accommodation with a highly convenient location, this detached family home represents an appealing and practical choice for those seeking comfort, flexibility and energy efficiency in Locks Heath.







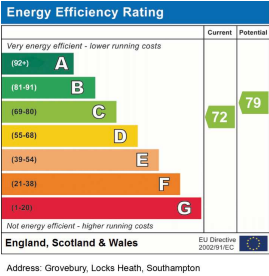
Floor Plan



Area Map



Energy Performance Graph



These particulars, whilst believed to be accurate are set out as a general outline only for guidance and do not constitute any part of an offer or contract. Intending purchasers should not rely on them as statements of representation of fact, but must satisfy themselves by inspection or otherwise as to their accuracy. No person in this firms employment has the authority to make or give any representation or warranty in respect of the property.

32 Bridge Rd, Park Gate, Southampton SO31 7GF  
Tel:01489 584 298, Email:hello@chimneypotsestateagents.co.uk, <https://www.chimneypotsestateagents.co.uk/>

