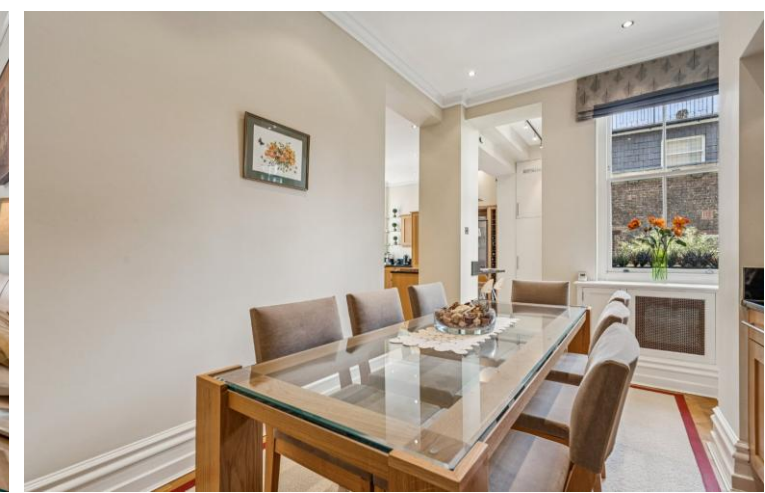
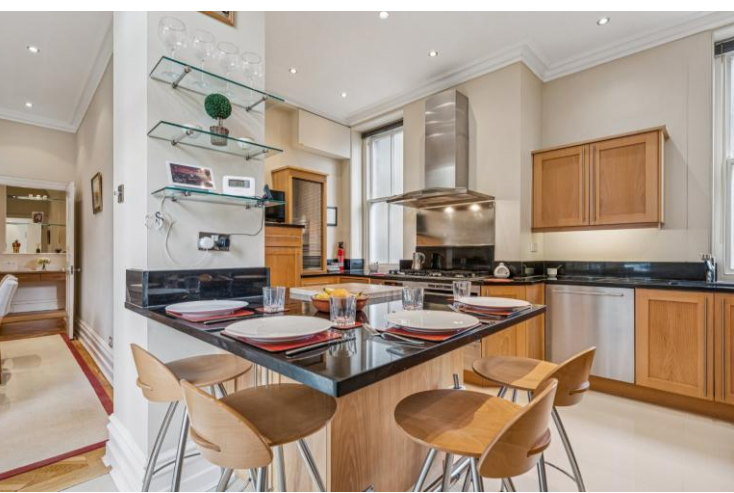




Iverna Gardens
Kensington, W8

CHESTERTONS





An exceptional three-bedroom first floor apartment set within a highly sought-after portered mansion block in the heart of prime Kensington.

Positioned at the preferred garden square end of Iverna Gardens, the apartment enjoys an outlook overlooking arguably Kensington's prettiest white-stone church, while also benefiting from generous ceiling heights, elegant proportions, and excellent natural light throughout.

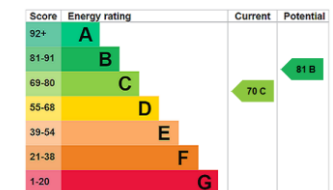
At the heart of the home is an impressive double reception room, providing exceptional entertaining space with a wonderfully flexible layout. Large sash windows frame the charming outlook and flood the room with natural light, while attractive period detailing enhances the sense of character and volume. The reception space opens onto a private balcony, offering an ideal spot for morning coffee or to unwind on a summer's evening.

The apartment further comprises a separate kitchen, three well-proportioned bedrooms, and private outdoor space, all arranged within a well-balanced layout suited to both comfortable day-to-day living and stylish entertaining. Residents benefit from the convenience and security of a well-maintained portered building, adding to the appeal of this prestigious address.

Iverna Gardens is ideally located moments from an array of renowned boutiques, restaurants, and excellent transport connections. The green open spaces of Kensington Gardens and Hyde Park are within easy reach, alongside the world-class amenities of Kensington High Street, South Kensington, and Knightsbridge.

- Three bedrooms
- Balcony
- Porter
- Double reception room
- Separate kitchen
- Dining room

Asking Price £2,750,000



Tenure: Share of Freehold - Lease 949 years
Service Charge: TBC
Ground Rent: £25
Local Authority: Kensington and Chelsea
Council Tax Band: H

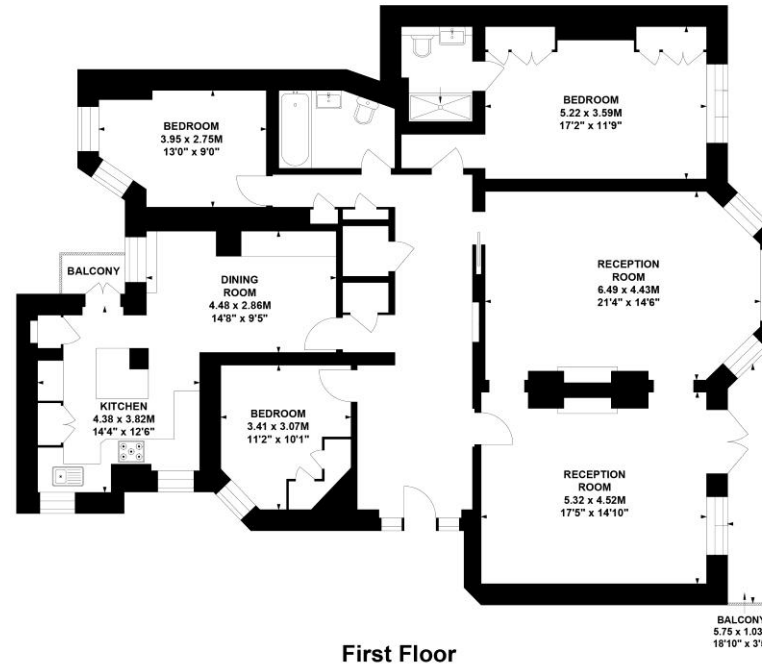
Chestertons Kensington Sales

116 Kensington High Street
 London
 W8 7RW
 kensington@chestertons.co.uk
 020 7937 7244
 chestertons.co.uk

Iverna Gardens, W8

Approximate gross internal area
165.32 sq m / 1779 sq ft

Key :
CH - Ceiling Height



Not to scale, for guidance only and must not be relied upon as a statement of fact.
All measurements and areas are approximate only

Chesterton UK Services Limited trading as Chestertons for themselves and for the vendor of this property whose agents they are, give notice that (i) these particulars do not constitute any part of an offer or contract, (ii) all statements contained within these particulars are made without responsibility on the part of Chestertons or the vendor, (iii) whilst made in good faith, none of the statements contained within these particulars are to be relied upon as a statement or representation of fact, (iv) any intending purchasers must satisfy themselves by inspection or otherwise as to the correctness of each of the statements contained within these particulars, (v) the vendor does not make or give either Chestertons or any person in their employment any authority to make or give representation or warranty whatsoever in relation to this property. Wide angle lenses may be used. ©Copyright Chestertons | Chesterton UK Services Limited | Registered Office 5th Floor, The Lantern, 75 Hampstead Road, London, NW1 2PL Registered Company Number 05334580.



This paper is
100% recyclable