



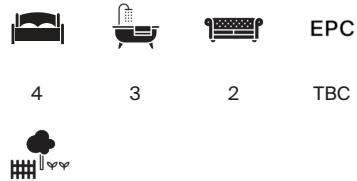
PURVES ROAD

London, NW10



PURVES ROAD

This four-bedroom end of terrace home has been meticulously refurbished to a high standard and offers a layout rarely found in a traditional London terrace



Local Authority: London Borough of Brent

Council Tax band: D

Tenure: Freehold

Guide Price: £1,650,000





Its unusually wide rear elevation creates impressively scaled living spaces, lending the property a sense of volume and openness that sets it apart from the norm. Thoughtfully reimaged throughout, the house blends period charm with contemporary design, soft neutral tones, and refined modern finishes.

Stepping inside, you are welcomed by a broad, beautifully finished hallway that flows into an elegant double reception room with access to a charming courtyard, an inviting space that introduces the home's generous proportions. The ground floor further features a spacious open-plan kitchen, dining, and living area made even more striking by the width of the house. The bespoke kitchen includes integrated appliances, custom cabinetry, skylights, a separate utility area, and expansive sliding doors that open directly onto the garden, filling the entire space with natural light. A guest cloakroom completes this level.







The first floor hosts two large double bedrooms and a sleek family bathroom, alongside a beautifully appointed principal suite at the front, enhanced by a bay window and an elegant ensuite.





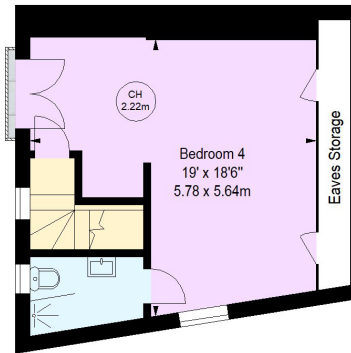
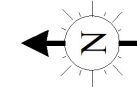
The top floor bedroom has been thoughtfully curated, featuring a Juliet balcony and its own ensuite shower room an ideal retreat or guest bedroom.

A uniquely proportioned home that combines character, craftsmanship, and modern comfort ready for its next owners to move in and enjoy.

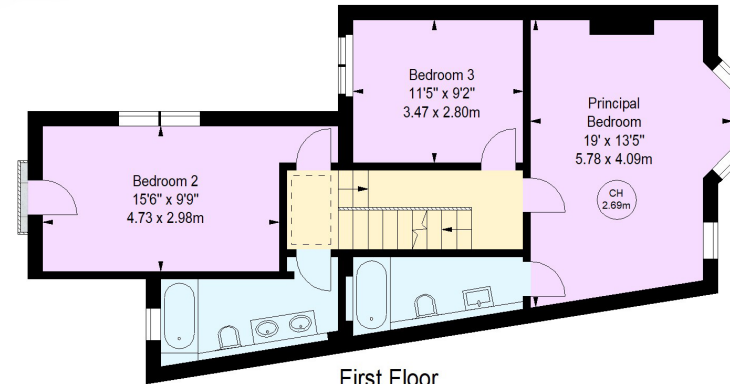




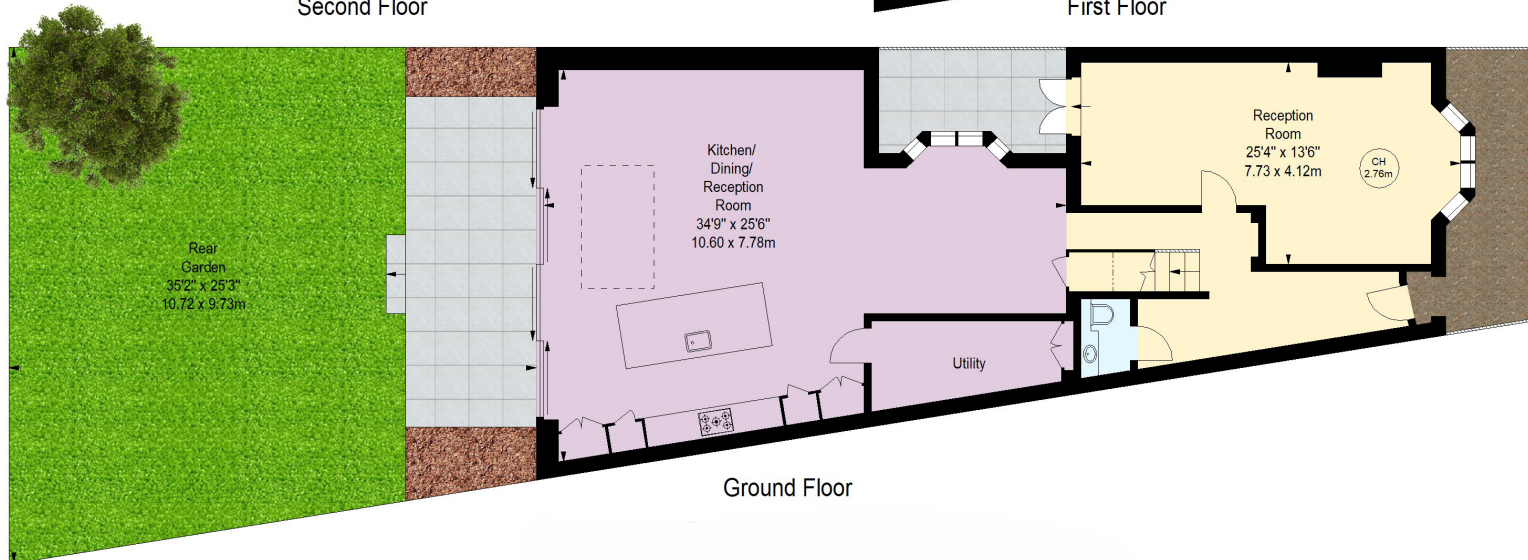
Key :
CH - Ceiling Height



Second Floor



First Floor



Ground Floor

(Including Basement / Loft Room)
Approximate Gross Internal Area = 214.78 sq m / 2312 sq ft

This plan is for layout guidance only. Not drawn to scale unless stated. Windows and door openings are approximate. Whilst every care is taken in the preparation of this plan, please check all dimensions, shapes and compass bearings before making any decisions reliant upon them. (ID767266)

Queen's Park

0203 815 3020

queenspark@knightfrank.com

Knight Frank Queen's Park

60c Salusbury Road

London, NW6 6NP

knightfrank.co.uk

Your partners in property

1. Particulars: These particulars are not an offer or contract, nor part of one. You should not rely on statements given by Knight Frank in the particulars, by word of mouth or in writing ("information") as being factually accurate about the property, its condition or its value. Neither Knight Frank nor any joint agent has any authority to make any representations about the property, and accordingly any information given is entirely without responsibility on the part of Knight Frank. 2. Material Information: Please note that the material information is provided to Knight Frank by third parties and is provided here as a guide only. While Knight Frank has taken steps to verify this information, we advise you to confirm the details of any such material information prior to any offer being submitted. If we are informed of changes to this information by the seller or another third party, we will use reasonable endeavours to update this as soon as practical. 3. Photos, Videos etc: The photographs, property videos and virtual viewings etc. show only certain parts of the property as they appeared at the time they were taken. Areas, measurements and distances given are approximate only. 4. Regulations etc: Any reference to alterations to, or use of, any part of the property does not mean that any necessary planning, building regulations or other consent has been obtained. A buyer must find out by inspection or in other ways that these matters have been properly dealt with and that all information is correct. 5. Fixtures and fittings: A list of the fitted carpets, curtains, light fittings and other items fixed to the property which are included in the sale (or may be available by separate negotiation) will be provided by the Seller's Solicitors. 6. VAT: The VAT position relating to the property may change without notice. 7. To find out how we process Personal Data, please refer to our Group Privacy Statement and other notices at <https://www.knightfrank.com/legals/privacy-statement>.

Particulars dated November 2025 Photographs and videos dated November 2025 All information is correct at the time of going to print. Knight Frank is the trading name of Knight Frank LLP. Knight Frank LLP is a limited liability partnership registered in England and Wales with registered number OC305934. Our registered office is at 55 Baker Street, London W1U 8AN. We use the term 'partner' to refer to a member of Knight Frank LLP, or an employee or consultant. A list of members names of Knight Frank LLP may be inspected at our registered office. If you do not want us to contact you further about our services then please contact us by either calling 020 3544 0692, email to marketing.help@knightfrank.com or post to our UK Residential Marketing Manager at our registered office (above) providing your name and address.

 Knight
Frank

