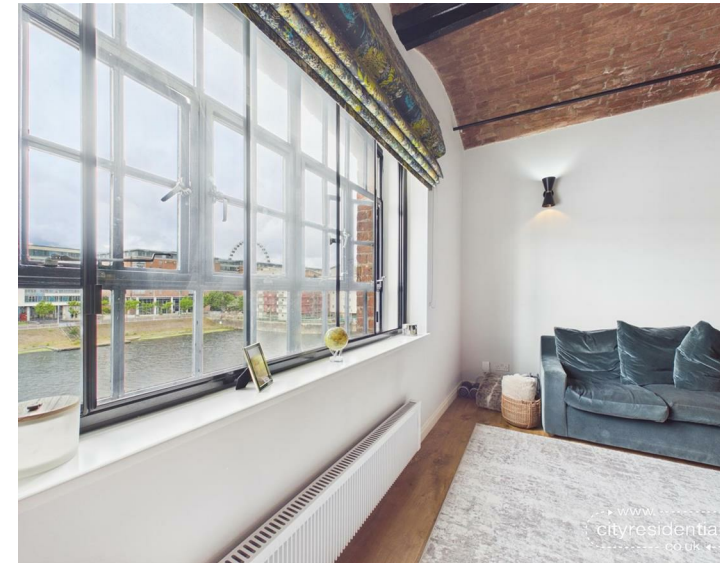
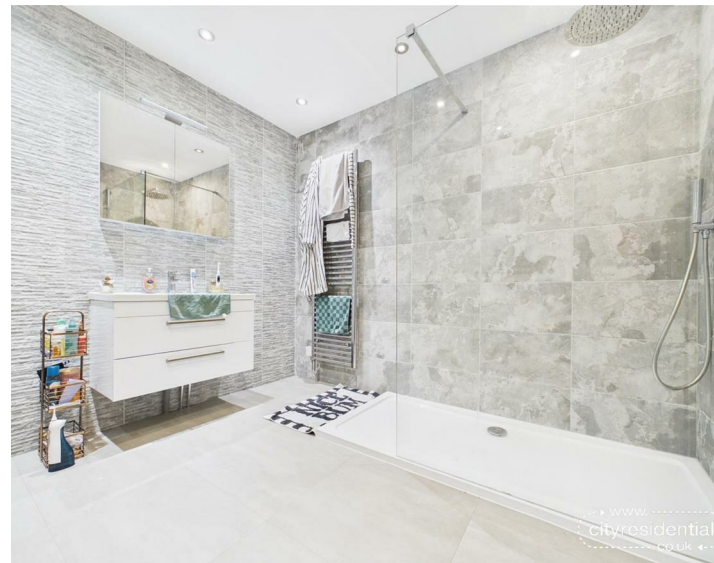
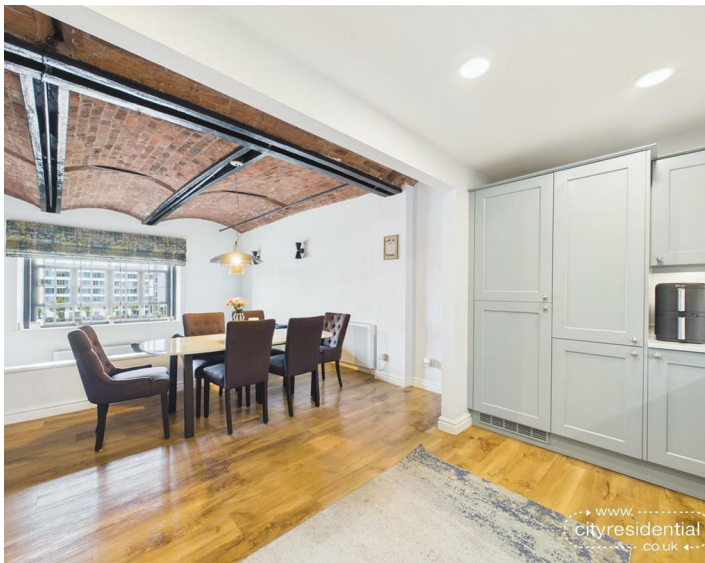


66 West Quay Wapping Quay, Liverpool, L3 4BW
Asking Price £280,000 Leasehold

WWW.
cityresidential
.co.uk



About the Property

City Residential are delighted to bring to market this stunning two bedroom apartment situated within the highly sought after Wapping Quay development, offering an exceptional blend of contemporary living and characterful waterfront charm.

Extensively refurbished to a high standard, this beautifully presented home retains an abundance of original features, including impressive brick chamber ceilings, exposed beams and pillars, and large original windows that flood the property with natural light while framing picturesque waterfront views.

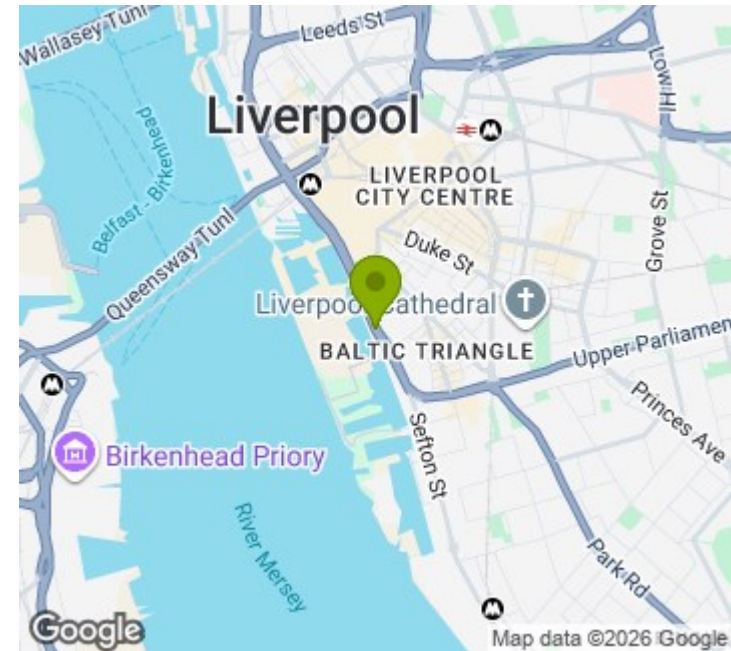
The accommodation comprises two generous double bedrooms, both enjoying views across the water and beyond. The master bedroom benefits from a stylishly refurbished en-suite bathroom featuring a sleek, modern design. At the heart of the home is a spacious open plan living, dining, and kitchen area, thoughtfully designed for both relaxation and entertaining. The recently refurbished kitchen offers a contemporary finish with integrated appliances, ample storage, and high quality fittings throughout. A well presented family bathroom completes the accommodation.

Further enhancing this superb property is a secure allocated parking space, a rare and highly desirable feature within the city centre.

Ideally located in the heart of Liverpool City Centre, Wapping Quay provides easy access to the world famous Albert Dock, Liverpool ONE shopping centre, and an array of restaurants, bars, and cultural attractions. Residents can also enjoy stunning dockside views directly from the development, with communal seating areas lining the waterfront, creating the perfect setting to relax and take in the surroundings.

This is a unique opportunity to acquire a beautifully renovated waterfront apartment in one of Liverpool's most desirable developments. Contact us today on 0151 231 6100 to arrange a viewing.

- Stunning two bedroom waterfront apartment in Wapping Quay
- Refurbished throughout with original character features
- Two double bedrooms with water views and en-suite to master
- Spacious open plan living area with modern fitted kitchen
- Secure allocated parking space
- Prime city centre location near Albert Dock and Liverpool ONE



Energy Efficiency Rating

	Current	Potential
Very energy efficient - lower running costs		
(92 plus) A		
(81-91) B		
(69-80) C	72	80
(55-68) D		
(39-54) E		
(21-38) F		
(1-20) G		
Not energy efficient - higher running costs		
England & Wales	EU Directive 2002/91/EC	



City Residential
81/87 Victoria Street, The Old Haymarket, Liverpool L1 6DG
T: 0151 231 6100 F: 0151 231 6105
E: sales@cityresidential.co.uk



WWW.
cityresidential
.co.uk