

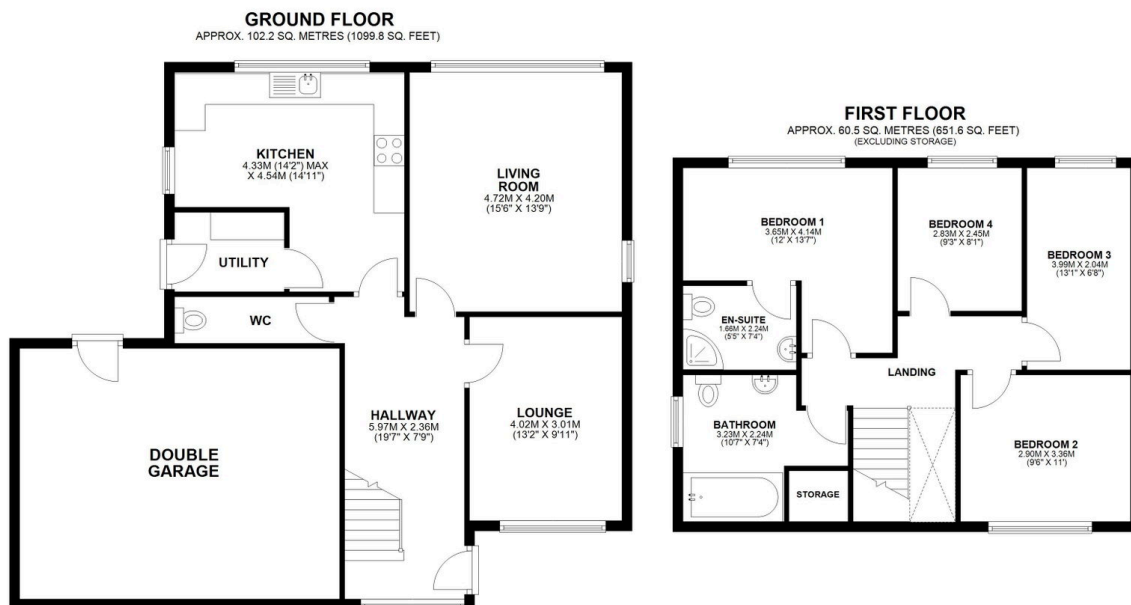
31 Bentley Park Road, Longton

£460,000

🛏 4 🚪 3 🚗 2



- Detached four bedroom property
- Situated in a quiet cul-de-sac in Longton
- Close to local schools, shops and amenities including Longton Brickcroft Nature Reserve
- Double garage ripe for conversion
- Master with ensuite
- Recently fitted 'Shaker style' kitchen
- Utility room
- Viewing highly advised



All measurements and floor areas are approximate, provided for guidance only, and should not be relied upon as exact.
Plan produced using PlanUp.

Spacious four bedroom detached family home in Longton village. Close to local schools and amenities this home will appeal to families. To the ground floor is an Entrance Hallway with Cloakroom/WC. Leading off to the spacious Lounge, Kitchen/Diner with Utility room and Study/Bedroom Five. To the first floor are four bedrooms including the Master with en-suite and a Family Bathroom. Externally to the front is driveway parking for three plus vehicles, a large double garage and to the rear, the garden is split level providing a patio area and lawned area

with established rose bushes, all situated in a quiet cul-de-sac location. Viewing is highly recommended. The property is Freehold. Please quote JB0397 when calling to arrange a viewing