



EARLS COURT ROAD, W8

£1,000,000

Two Bedrooms
Two Bathrooms
High Ceiling
Raised Ground Floor
Share of Freehold
Central Location

@marshandparsons
marshandparsons.co.uk

MARSH &
PARSONS



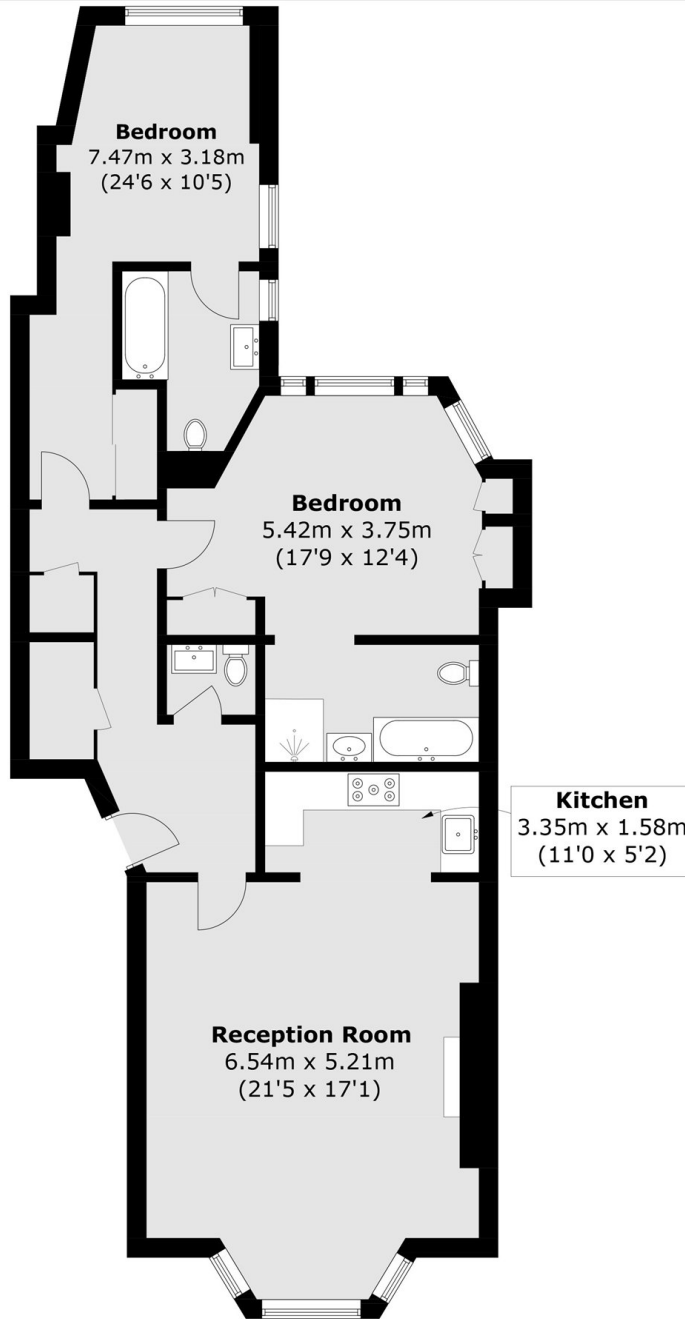
ABOUT THE PROPERTY

Impressive two-bedroom, two-bathroom raised ground floor apartment with over 1,000 sq ft of lateral space

While the amenities of Kensington and South Kensington are a short distance away. The nearest stations are Earl's Court Station (District and Piccadilly Lines) on the London Underground and West Brompton Station (District Line, National Rail and London Overground) that provides services to Clapham Junction and Gatwick.



STEP INSIDE EARLS COURT ROAD



Ground Floor

Total area (approx.): 100.9 sq. m (1086 sq. ft)

Kensington
020 7368 4450

Energy Rating: C We aim to make our particulars both accurate and reliable. However, they are not guaranteed; nor do they form part of an offer or contract. If you require clarification on any points then please contact us, especially if you're traveling some distance to view. Please note that appliances and heating systems have not been tested and therefore no warranties can be given as to their good working order

**MARSH &
PARSONS**