



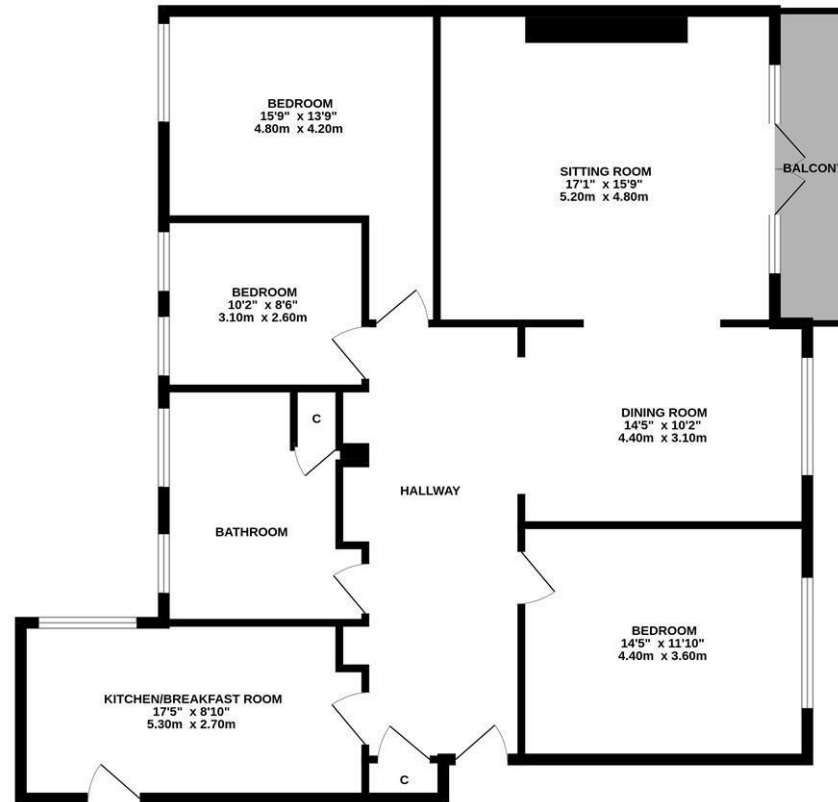
With no onward chain, a generous three bedroom second floor apartment boasting 1,280 Sq ft, positioned within this prestigious 1930's mansion block. Moor Court, perfectly placed on Westfield is within close proximity to the shops of Gosforth High Street and within Gosforth's Conservation Area.

The accommodation briefly comprises: communal entrance with secure telephone entry system and both lift and stair access to all floors; private entrance hall with storage cupboard; sitting room with dual windows and French doors providing balcony access; the balcony, facing south provides views over Dukes Moor; kitchen breakfast room with a range of fitted units, work surfaces and some integrated appliances; dining room; bathroom complete with three piece suite and dual windows; three bedrooms, bedroom three with dual windows. With allocated off-street parking, this great apartment demands an internal inspection.

Second Floor Apartment | 1,280 Sq ft (118.9m²) | Three Bedrooms | Sitting Room | Dining Room | Kitchen Breakfast Room | Bathroom | South Facing Balcony | Allocated Off-Street Parking | No Onward Chain | Leasehold - | Service Charge £4,501.67 Per Annum | Council Tax Band D | EPC: C



SECOND FLOOR
1280 sq.ft. (118.9 sq.m.) approx.



TOTAL FLOOR AREA: 1280 sq.ft. (118.9 sq.m.) approx.
Whilst every attempt has been made to ensure the accuracy of the floorplan contained here, measurements of doors, windows, rooms and any other items are approximate and no responsibility is taken for any error, omission or mis-statement. This plan is for illustrative purposes only and should be used as such by any prospective purchaser. The services, systems and appliances shown have not been tested and no guarantee, as to their operability or efficiency can be given.
Made with Meropix ©2025.



Offers Over £335,000

IMPORTANT NOTE: These particulars and the descriptions and measurements herein do not constitute representation and whilst every effort has been made to ensure accuracy, this cannot be guaranteed.

