



# Crutched Friars

London, EC3N

£3,250 per month  
(£750 per week)

An amazing two bedroom flat located in the heart of the City of London. The property offers larger than usual reception room, two bedrooms, two bathrooms and separate kitchen.

**CHESTERTONS**



# Crutched Friars

London, EC3N

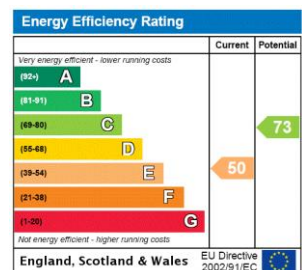
- LARGE LIVING ROOM
- SEPARATE KITCHEN
- TWO BEDROOM
- TWO BATHROOM



A huge two bedroom apartment situated in the City of London and surrounded by an abundance of amenities. This nearly 1200 sq. ft property boasts a vast reception room with dining area, separate kitchen, bathroom suite, master bedroom with large en-suite shower room, second double bedroom. The property is finished to a high standard throughout and is offered fully furnished.

The City of London is home to some of London's most popular attractions, including Tower Bridge, The Tower of London and St Paul's Cathedral. The area boasts world famous restaurants and is home to notable buildings such as the Gherkin & Heron Tower.

**Minimum Term:** 12 months  
**Deposit Required:** £3,750.00  
**Local Authority:** (3052) City of London  
**Council Tax Band:** F  
**EPC Rating:** E  
**Part Furnished, Unfurnished**



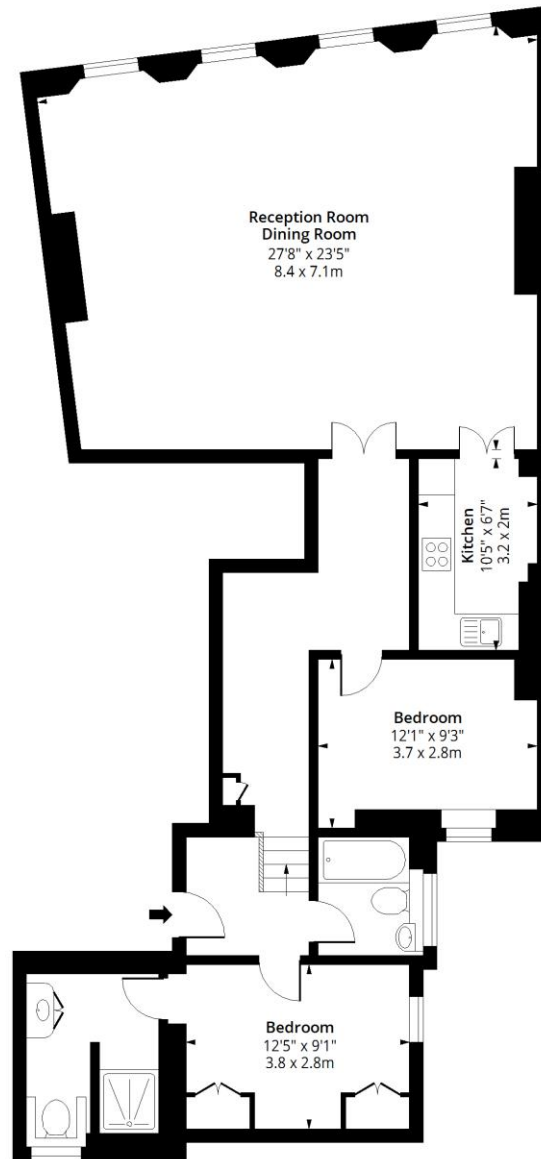
### Chestertons Tower Bridge Lettings

220 Tower Bridge Road  
 Tower Bridge  
 London  
 SE1 2UP  
 towerbridgelettingsusers@chestertons.co.uk  
 02073576911  
 chestertons.co.uk

Additional tenant charges apply (fees apply to non-AST tenancies only)  
 Tenancy Agreement Fee: £300  
 References per Tenant/Guarantor: £60  
 Inventory check (approx. £100 – £250 inc. VAT)  
 chestertons.co.uk/property-to-rent/applicable-fees

# Crutched Friars, EC3N

Approx. Gross Internal Area 1181 Sq Ft - 109.71 Sq M



## First Floor

Floor Area 1181 Sq Ft - 109.71 Sq M

Floor plan is for illustrative purposes only and is not to scale. Every attempt has been made to ensure the accuracy of the floor plan shown, however all measurements, fixtures, fittings and data shown are an approximate interpretation for illustrative purposes only.

lpaplus.com



Chesterton UK Services Limited trading as Chestertons for themselves and for the vendor of this property whose agents they are, give notice that (i) these particulars do not constitute any part of an offer or contract, (ii) all statements contained within these particulars are made without responsibility on the part of Chestertons or the vendor, (iii) whilst made in good faith, none of the statements contained within these particulars are to be relied upon as a statement or representation of fact, (iv) any intending purchasers must satisfy themselves by inspection or otherwise as to the correctness of each of the statements contained within these particulars, (v) the vendor does not make or give either Chestertons or any person in their employment any authority to make or give representation or warranty whatsoever in relation to this property. Wide angle lenses may be used. ©Copyright Chestertons | Chesterton Global Ltd | Registered Office 40 Connaught Street, Hyde Park, London W2 2AB Registered Company Number 05334580.



This paper is  
100% recyclable