



## COLOMB STREET, SE10

£800,000

Extended Victorian house  
Refurbished throughout  
Two double bedrooms  
West facing garden  
Ample storage including loft  
Energy rating: d

@marshandparsons  
marshandparsons.co.uk

MARSH &  
PARSONS

# ABOUT THE PROPERTY

An outstanding opportunity to acquire a beautifully refurbished Victorian residence in the heart of sought after Greenwich, offering elegant period charm alongside high-quality modern upgrades throughout. This striking home immediately impresses with exceptional kerb appeal. The front facade has been meticulously re-pointed, with the external brickwork professionally cleaned to reveal a refined sandstone appearance making it one of the most attractive homes on the road.

Maze Hill rail station is a short walking distance, as well as Greenwich park and a wide range of shops on your doorstep, which include coffee shops, restaurants, river side pubs, gyms and supermarkets to name a few.







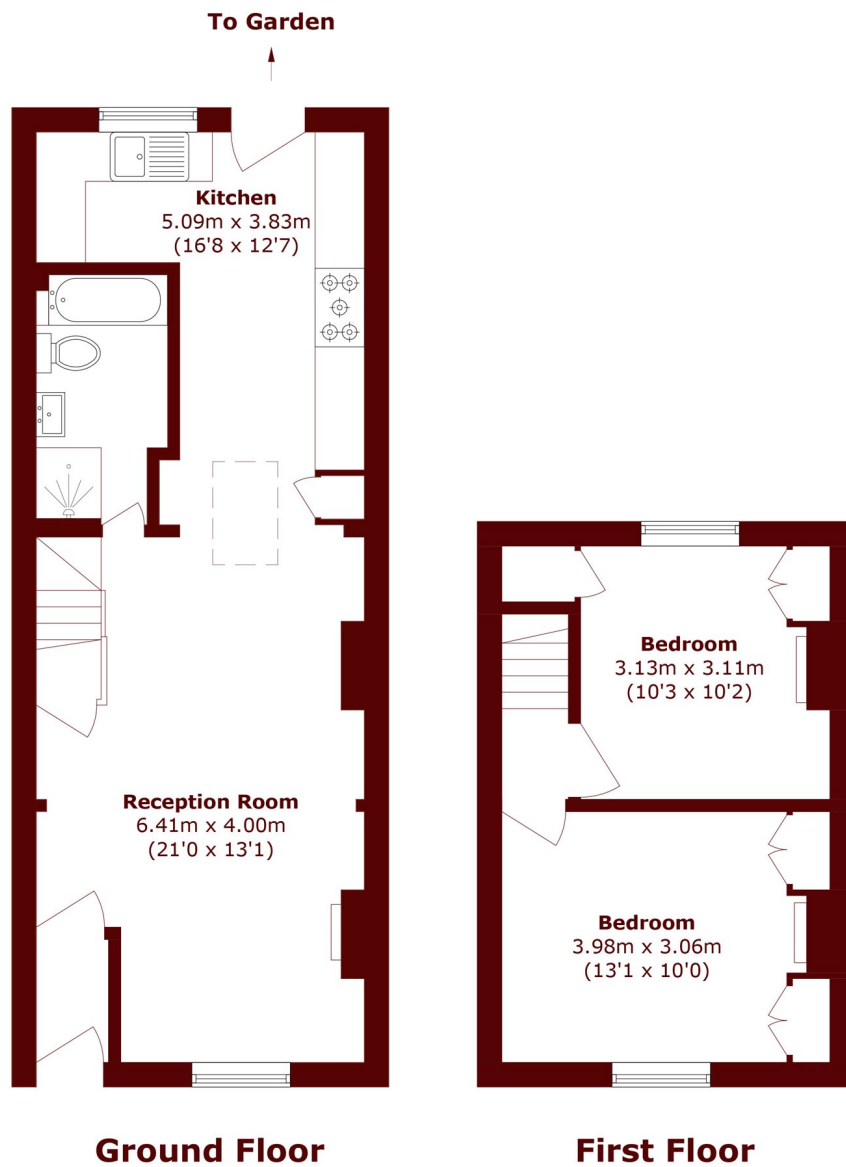
## FURTHER DETAILS

Inside, the spacious reception room provides a welcoming living space, enhanced by sash windows, wooden shutters and original oak flooring that has been expertly sanded and re-oiled. To the rear, a newly extended, premium modern kitchen forms the heart of the home. Complete with high-spec appliances, including a statement Elise Rangemaster powder blue Induction hob cooker and integrated wine cooler.

The property comprises two double bedrooms, each benefitting from tall fitted wardrobes. Further storage is available via the loft space. A standout feature is the large west facing private garden. This generous plot offers exciting potential for a garden room or home office.



# STEP INSIDE COLOMB STREET



Total area (approx.): 70.6 sq. m (759.9 sq. ft)

**Greenwich**  
020 8312 8312

Energy Rating: D We aim to make our particulars both accurate and reliable. However, they are not guaranteed; nor do they form part of an offer or contract. If you require clarification on any points then please contact us, especially if you're traveling some distance to view. Please note that appliances and heating systems have not been tested and therefore no warranties can be given as to their good working order

**MARSH &  
PARSONS**