



## MARGRAVINE ROAD, W6

£650,000

This period garden flat has many special features including a large utility/storage room and lovely patio garden. The flat comprises of two bedrooms, a large open plan kitchen with floor-to-ceiling concertina glass

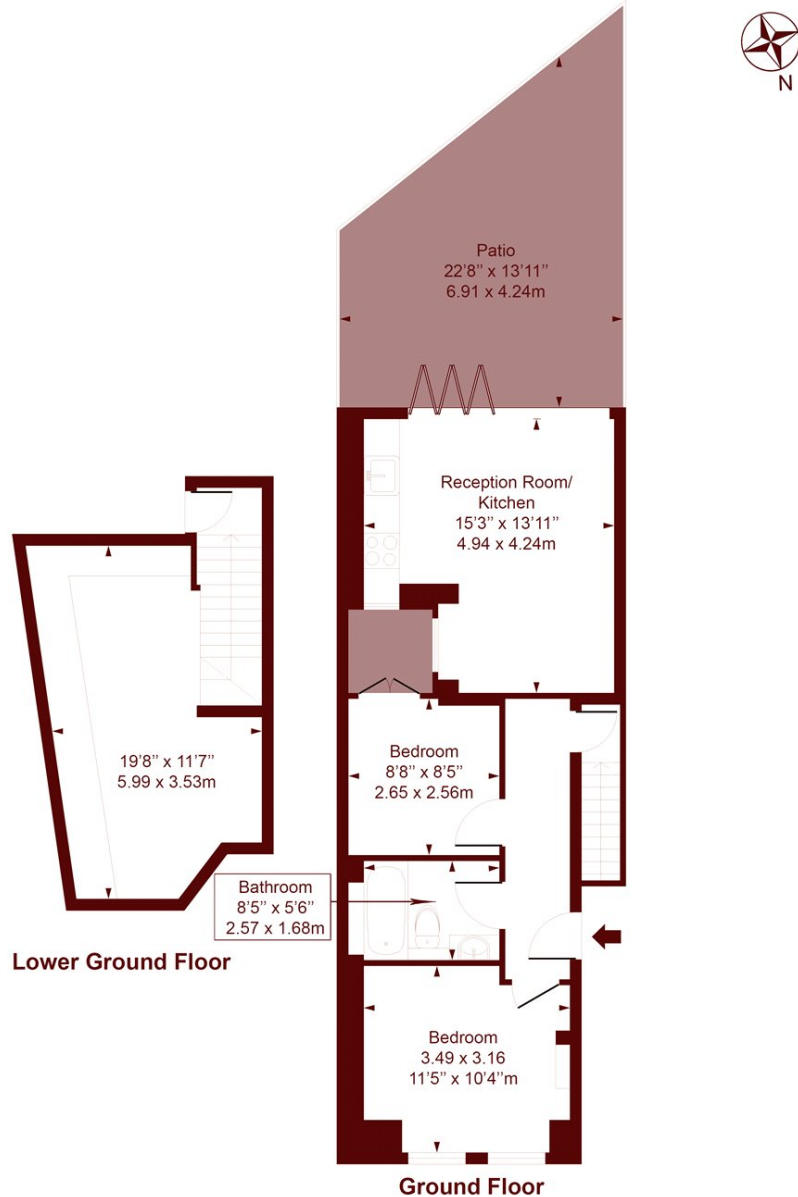
Period two bedroom flat  
Immaculately presented

Private patio garden  
Short walk to Barons Court

# STEP INSIDE MARGRAVINE ROAD

## Margravine Road

APPROX. GROSS INTERNAL FLOOR AREA: 792 SQFT/ 73 SQM



Measured in accordance with RICS guidelines. Every attempt is made to ensure accuracy  
However all measurements are approximate.  
The floor plan is illustrative purposes only and is not to scale  
ELLIE CLAIRE PHOTOGRAPHY LTD  
[www.ellieclairephotography.com](http://www.ellieclairephotography.com)

**Bishops Park**  
020 7993 9888

Energy Rating: C We aim to make our particulars both accurate and reliable. However, they are not guaranteed; nor do they form part of an offer or contract. If you require clarification on any points then please contact us, especially if you're traveling some distance to view. Please note that appliances and heating systems have not been tested and therefore no warranties can be given as to their good working order

**MARSH &  
PARSONS**