



**POOLE
TOWNSEND**

Maylands Grove, Barrow-In-Furness, LA13 0AN

£289,950

🛏 4 🚿 2 🚺 2



This beautiful family home has been significantly improved through modernising and extending the living space with a 2 storey extension added to the rear. The accommodation is immaculately presented throughout, featuring an entrance hall that leads to a bay fronted lounge and an open plan family room with dining area and an opening into an impressive kitchen with breakfast bar/island, integrated appliances and double doors opening into the garden. The landing accessed four bedrooms, a fully fitted dressing room, a family bathroom and a separate 3-piece shower room.

Location

What3Words///screen.boosted.rationing

Description

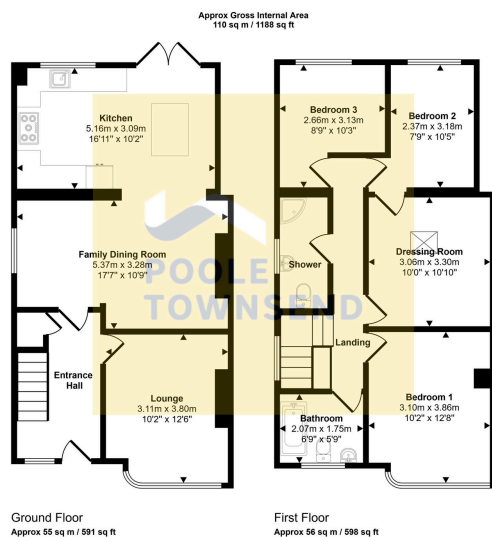
Situated in a lovely residential location with a tree lined verge setting the property back from the road and a semi-enclosed garden adding to the kerb appeal.

The living accommodation features two separate rooms, a bay windowed lounge overlooking the front garden and a central family room with dining space.

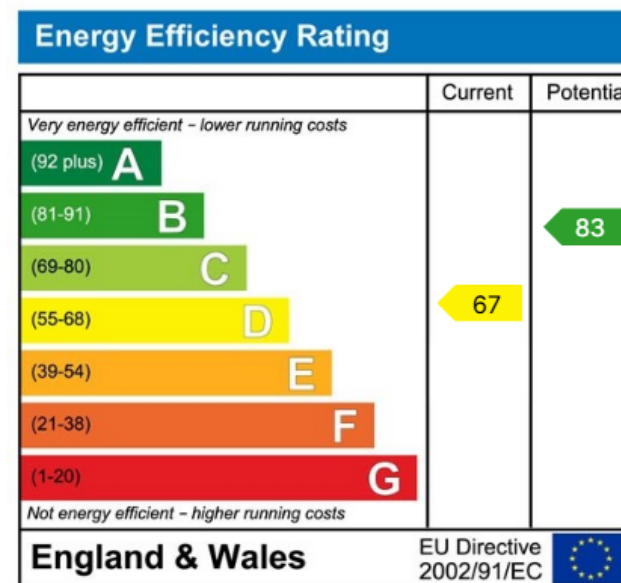
There is open access from the family room, leading into the kitchen which is an excellent addition to the property and forms the lower level of the 2-storey extension. Upgraded by the current homeowners, this kitchen has colour and style throughout the room, including a breakfast bar/island unit with integrated drinks cooler. There is a ceramic sink set beneath the work surface and integrated appliances including a dishwasher, fridge and a freezer. There is provision to accommodate a range style cooker where there is a wall mounted cooker hood fitted above the recess.

Glazed double doors open from the kitchen into the rear garden with a short run of steps leading to the stepping stones that run across the lawn, taking you to a tiled patio. There is a planted border providing colour and a raised brick set patio, providing a secondary area to relax.





- Semi Detached Beautiful Family Home
- Entrance Hall
- Open Plan Family Lounge / Dining Room
- Four Bedrooms / Dressing Room
- Large Beautiful Rear Garden And Patio Area
- Modernised And Two Storey Extension
- Bay Fronted Lounge
- Integrated Kitchen And Island
- Family Bathroom / Separate Three Piece Shower Room
- Front Garden And Driveway



Visit us at
www.pooletownsend.co.uk
enquiries@pooletownsend.co.uk

We are open
 Monday – Friday 9.00 – 5.00
 Saturday 9.00 – 1.00

Barrow 01229 811811
 Ulverston 01229 588111
 Grange 015395 33316
 Kendal 01539 734455
 Milnthorpe 015395 62044