



29 Matlock Street, Netherfield - NG4 2FT

Guide Price £180,000





29 Matlock Street

Netherfield, Nottingham

GUIDE PRICE £180,000-£190,000. TWell-presented period terrace with 2 double bedrooms, 2 receptions, fitted kitchen with utility and a low-maintenance garden - all close to Netherfield's amenities!

Council Tax band: A

Tenure: Freehold

EPC Energy Efficiency Rating: D

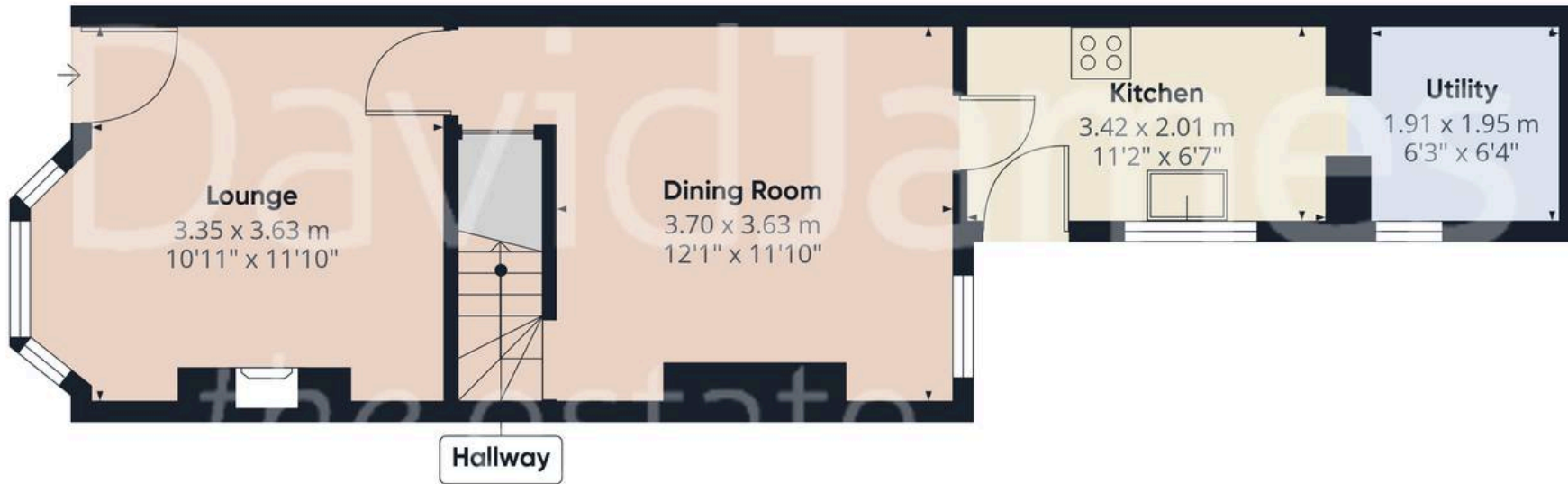
EPC Environmental Impact Rating:

- Well-presented period terrace house
- Ideal for a first-time buyer looking to step on the property ladder
- A short walk from Netherfield's nearby amenities, bus and train services
- Bright and inviting lounge with a superb feature fireplace and bay window with seating
- Separate versatile dining room
- Fitted kitchen with a useful adjoining utility area
- Two first floor double bedrooms
- First floor period-style bathroom with a three-piece white suite
- Low-maintenance, south-westerly facing and enclosed rear garden with a sheltered seating area
- Viewing highly recommended!





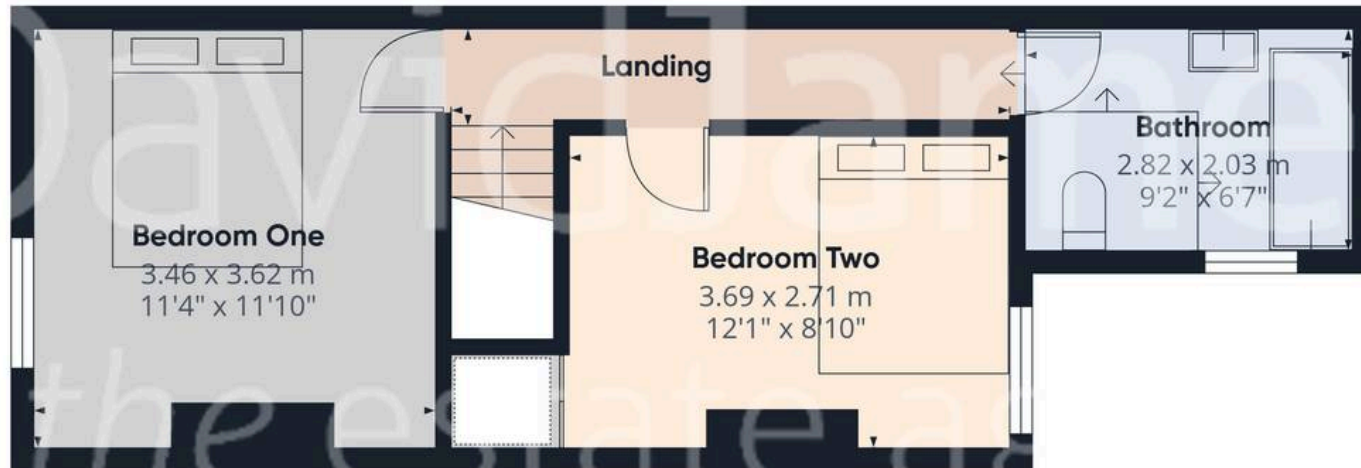




Floor 0

Approximate total area⁽¹⁾

71.9 m²
773 ft²



Floor 1

(1) Excluding balconies and terraces

Calculations reference the RICS IPMS 3C standard. Measurements are approximate and not to scale. This floor plan is intended for illustration only.

GIRAFFE360



David James Estate Agents

376 Carlton Hill, Carlton - NG4 1JA

0115 987 8957 • carlton@david-james.com • www.david-james.com

These particulars are produced in good faith and are set out as a general guide only. Measurements are approximate and floor plans are for illustrative purposes only. Services have not been tested. We have established professional relationships with third-party suppliers for the provision of services to Clients, details of which can be found on the property listing page on our website.