



La Ferme Du Roi

La Rue Du Bocage



La Ferme Du Roi, La Rue Du Bocage, St Brelade, JE3 8BP

Steeped in rich history, La Ferme du Roi is a remarkable countryside estate dating back to 1616. Reputed to have once sheltered King Charles II and his mistress during the English Civil War, this former working farm now offers a rare blend of heritage, space, and lifestyle, set within the peaceful country lanes of St Brelade. Offering two separate dwellings the property is both appealing to a two generation style set up or home with income.

The main house, offering a generous and inviting living space, kitchen/diner with vaulted ceilings and living room with log burning stove and original wooden beams, a cloakroom and utility are also on this level. The first and second floor provide four bedrooms and two further bathrooms. there is also potential to convert the eaves storage into an additional bedroom. In addition, there is a home office with a separate entrance, ideal for those working from home or who want may wish to run a business from the property. There are also two further rooms that can be developed into further accommodation/gym space.

Separate from the main house, a two bedroom guest cottage offers complete independence and privacy. Newly renovated throughout, bathed in natural light and arranged across a spacious open plan upper level, it's ideally suited for visiting guests, extended family, or as an income generating rental .

In addition to the residential accommodation, the estate includes a garage currently used for storage, a traditional outhouse, and a large garden storage unit, all adding to the functionality and charm of the grounds.

Set across approximately seven verges of land, the property includes two large fields currently leased for the cultivation of Jersey Royals. This arrangement not only preserves the land's agricultural heritage but also provides a steady income for the general maintenance, including the care of the estate's mature trees and established hedge rows. For those seeking alternative uses, the land is perfectly suited for equestrian or small holding purposes, offering true versatility and privacy.

With ample space, there is scope to add a garage and stables, or a beautifully designed outdoor entertaining space allowing new owners to tailor the estate to their own lifestyle needs.



Parish: St Brelade

Qualification: Qualified

Tenure: Freehold

Price £1,850,000



- Traditional Farmstead
- Two Generation/Home with income
- Six Bedrooms/Five bathrooms
- Peaceful rural location
- Ample parking and storage
- 7 Verges of agricultural land

















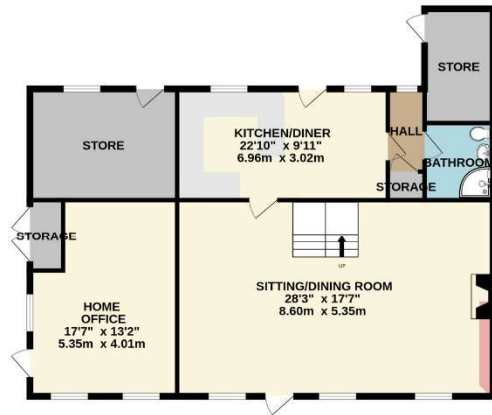








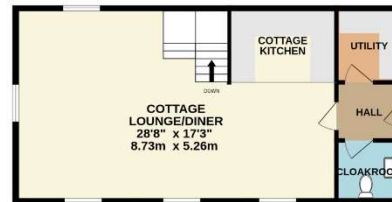
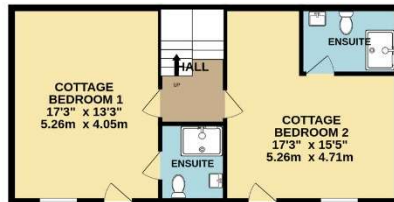
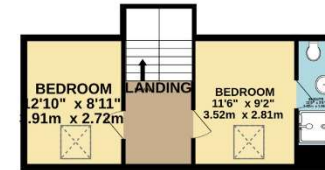
GROUND FLOOR
1767 sq.ft. (164.2 sq.m.) approx.



1ST FLOOR
1226 sq.ft. (113.9 sq.m.) approx.



2ND FLOOR
334 sq.ft. (31.0 sq.m.) approx.



TOTAL FLOOR AREA : 3680sq.ft. (341.9 sq.m.) approx.

Whilst every attempt has been made to ensure the accuracy of the floorplan contained here, measurements of doors, windows, rooms and any other items are approximate and no responsibility is taken for any error, omission or mis-statement. This plan is for illustrative purposes only and should be used as such by any prospective purchaser. The services, systems and appliances shown have not been tested and no guarantee as to their operability or efficiency can be given.
Made with Metropix ©2025

This plan is for layout guidance only. Not drawn to scale unless stated. Windows and door openings are approximate. Whilst every care is taken in the preparation of this plan, please check all dimensions, shapes and compass bearings before making any decisions reliant upon them.

Services

Borehole water

Septic tank (main)

Tight Tank (cottage)

Single and double glazing

Grade 3 listing

+441534 877977

Knight Frank Jersey

37-39 Halkett Place St Helier, Jersey JE2 4WG

knightfrank.je

Your partners in property

1. Particulars: These particulars are not an offer or contract, nor part of one. You should not rely on statements given by Knight Frank Jersey in the particulars, by word of mouth or in writing ("information") as being factually accurate about the property, its condition or its value. Neither Knight Frank Jersey nor any joint agent has any authority to make any representations about the property, and accordingly any information given is entirely without responsibility on the part of Knight Frank Jersey. 2. Material Information: Please note that the material information is provided to Knight Frank Jersey by third parties and is provided here as a guide only. While Knight Frank Jersey has taken steps to verify this information, we advise you to confirm the details of any such material information prior to any offer being submitted. If we are informed of changes to this information by the seller or another third party, we will use reasonable endeavours to update this as soon as practical. 3. Photos, Videos etc: The photographs, property videos and virtual viewings etc. show only certain parts of the property as they appeared at the time they were taken. Areas, measurements and distances given are approximate only. 4. Regulations etc: Any reference to alterations to, or use of, any part of the property does not mean that any necessary planning, building regulations or other consent has been obtained. A buyer must find out by inspection or in other ways that these matters have been properly dealt with and that all information is correct. 5. Fixtures and fittings: A list of the fitted carpets, curtains, light fittings and other items fixed to the property which are included in the sale (or may be available by separate negotiation) will be provided by the Seller's Lawyer. Particulars dated 05/02/2026. All information is correct at the time of going to print.

