

# PULLEN

ESTATE AGENTS



## 88 Kirkham Street

London, SE18 2JX

£475,000

A charming and well-presented three-bedroom family home offering generous living space, neutral décor throughout and a private rear garden.

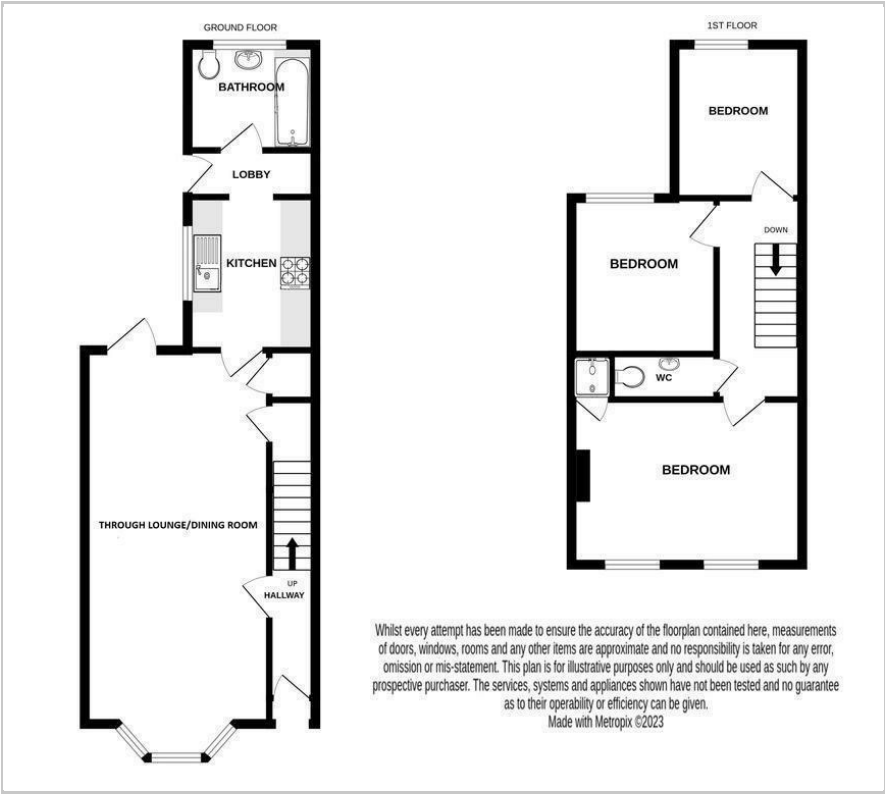
- Chain free
- BTL opportunity available
- Access to Welling & Plumstead mainline stations
- Number of well regarded local schools
- Three bedrooms
- Private garden

### Viewing

Please contact our Chislehurst Office on 02034899589 if you wish to arrange a viewing appointment for this property or require further information.



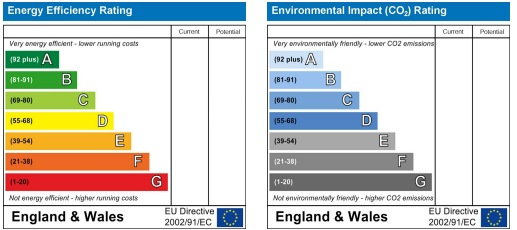
Floor Plan



Area Map



Energy Efficiency Graph



These particulars, whilst believed to be accurate are set out as a general outline only for guidance and do not constitute any part of an offer or contract. Intending purchasers should not rely on them as statements of representation of fact, but must satisfy themselves by inspection or otherwise as to their accuracy. No person in this firms employment has the authority to make or give any representation or warranty in respect of the property.