



## Cumberland Mills Square, E14

£634 Per week

A recently refurbished property in Cumberland Mills. This apartment has two bedrooms, a separate kitchen, river views and allocated parking. Set within a secure development with concierge and presented furnished.

Cumberland Mills is a quiet residential development moments from Island Garland DLR, the historic Watermans Arms and Mudchute Park.

### Features

- Over 900 Sqft
- Two Bedrooms
- Two Bathrooms
- Separate Kitchen
- Riverside Development
- Parking Space Available

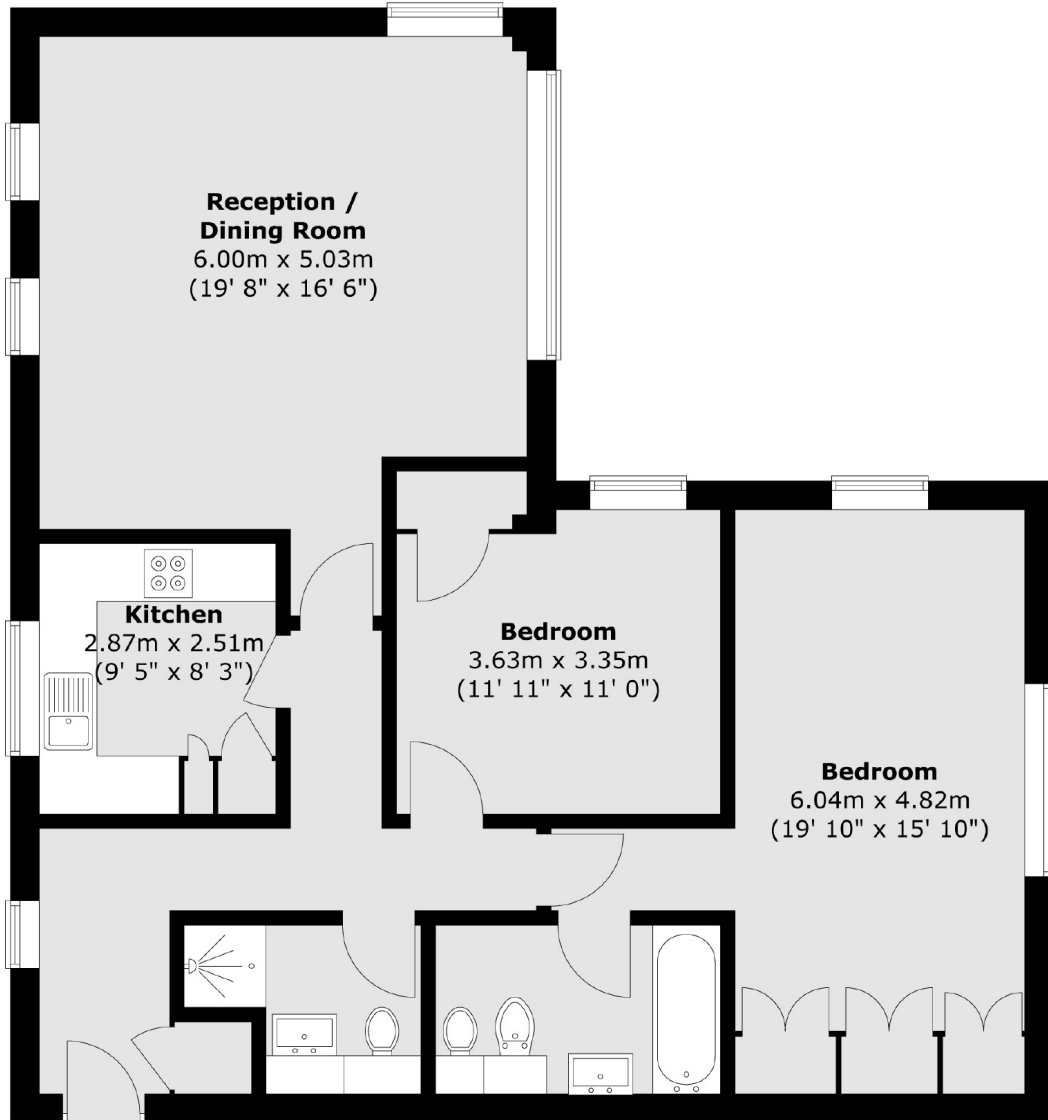


Cumberland Mills Square, E14



# Cumberland Mills Square, London, E14

## Fourth Floor



Total area (approx.) : 86.6 sq. m (932 sq. ft)