



# Axis Court

15 Chambers Street, SE16

1,900 £ per month  
(438.46 £ per week)

A one bedroom apartment offered in excellent condition arranged on the 2nd floor of this portered development moments from the river.





# Axis Court

15 Chambers Street, SE16

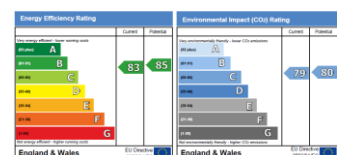
- Modern one bedroom apartment
- Open plan kitchen and reception
- Wood floors
- Excellent location
- Furnished



Situated on the 2nd floor of this portered development is this contemporary one bedroom apartment. The property benefits from having a modern open plan kitchen, modern bathroom and good size double bedroom with built in storage. The property is ideally located for Bermondsey station and is a short walk to the array of bars and restaurants that Shad Thames has to offer.

Shad Thames is a unique area steeped in history and character situated along the south side of the River Thames. The area is home to London's most iconic landmark, Tower Bridge and is within the vicinity of many attractions such as The Shard, Tate Modern and Tower of London. Shad Thames boasts a variety of bars and restaurants and is a short walk to the delights of Bermondsey Street, Maltby Street & Borough markets. Although The City is within walking distance the area is well connected with excellent transport links via London Bridge & Tower Hill stations as well as the river taxi.

**Minimum Term:** months  
**Deposit Required:** 2,192.31 £  
**Local Authority:** Southwark Council  
**Council Tax Band:** D  
**EPC Rating:** C  
**Furnished**

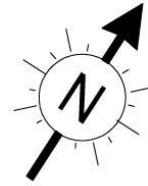


### Chestertons Tower Bridge Lettings

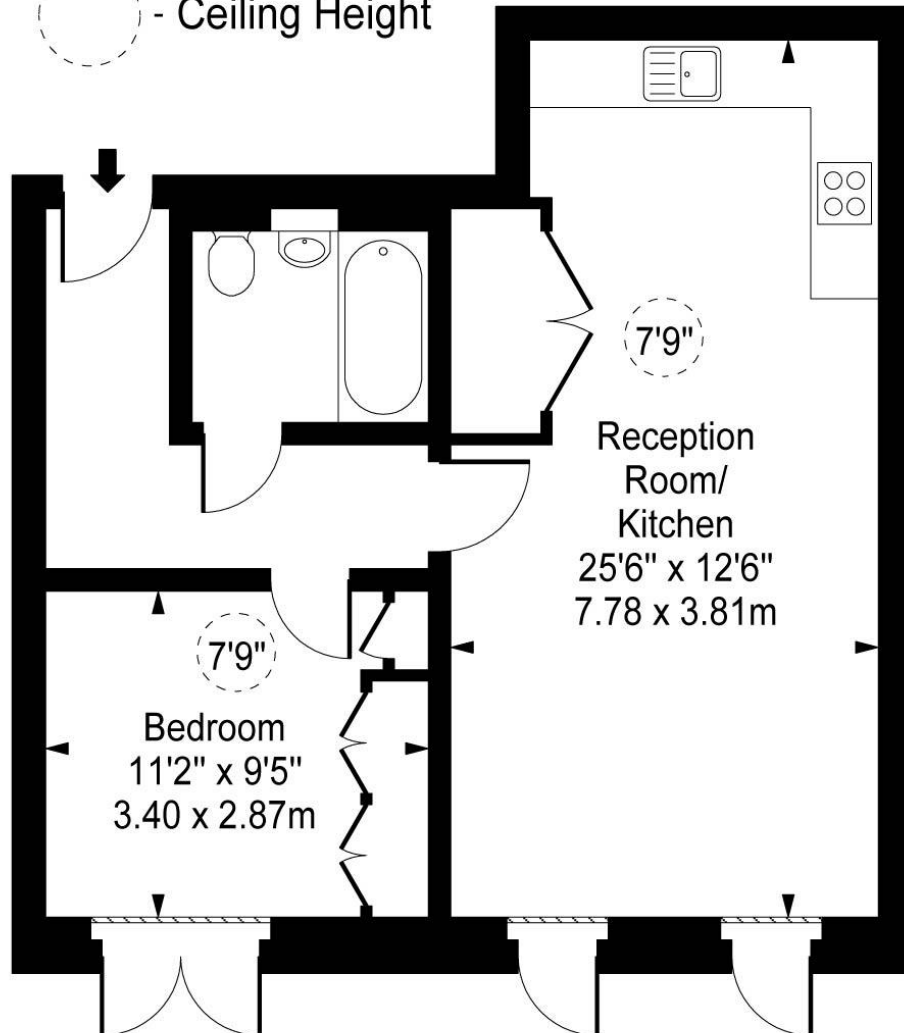
220 Tower Bridge Road  
 Tower Bridge  
 London  
 SE1 2UP  
 towerbridgelettingsusers@chestertons.co.uk  
 02073576911  
 chestertons.co.uk

Additional tenant charges apply (fees apply to non-AST tenancies only)  
 Tenancy Agreement Fee: £300  
 References per Tenant/Guarantor: £60  
 Inventory check (approx. £100 – £250 inc. VAT)  
 chestertons.co.uk/property-to-rent/applicable-fees

**Axis Court,  
Chambers Street, SE16**



○ - Ceiling Height



**Second Floor**

**Approx Gross Internal Area      550 Sq Ft - 51.10 Sq M**

For Illustration Purposes Only - Not To Scale

[www.goldlens.co.uk](http://www.goldlens.co.uk)

Ref. No. 014187R

