



THE AVENUE,
BRANKSOME PARK











DETAILS

Offered for sale in true show home condition, a great opportunity to acquire the 'Jewel in the Crown', a simply stunning duplex penthouse apartment situated at an iconic nearly new and exclusive development set in a wonderful location.

The living space extends to just over 2,106 sq ft and the luxurious specification includes direct coded lift entry to the third floor, App operated underfloor heating and alarm system, powder coated aluminium windows and patio doors with solar controlled glazing as well as an integrated Bluetooth sound system.

The accommodation on the second floor comprises three double bedrooms, two of which open to a generous balcony and all fitted with bespoke bedroom furniture. The principal bedroom is en-suite and there is a stylish family bathroom serving bedrooms 2 and 3.

An internal staircase rises to the third floor giving access to the very generous roof terrace and is home to the spectacular open plan lifestyle room featuring the living and dining areas as well as the fabulous kitchen with stone topped central island and breakfast bar, fitted with high end appliances with brand names to include Gaggenau, Siemens and Quooker. Also on this floor is a useful utility room with plenty of storage along with a guest cloakroom.

Situated less than 200 metres away from one of the area's glorious sandy beaches at Branksome Chine. From here, you can stroll along the promenade to Bournemouth in one direction and the world famous Sandbanks Peninsula in the other. The amenities of Canford Cliffs village are close by, as is the cosmopolitan suburb of Westbourne where a whole host of coffee bars, hair/beauty salons as well as excellent eateries and individual boutiques can be found.

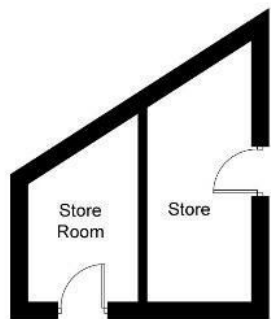
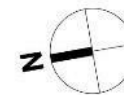
AT A GLANCE

Guide Price:	£1,590,000
Tenure:	Leasehold - Share of Freehold
Stamp Duty:	£108,750 (Main Home)
Local Authority:	BCP Council
Council Tax:	£4,529.00 Band H

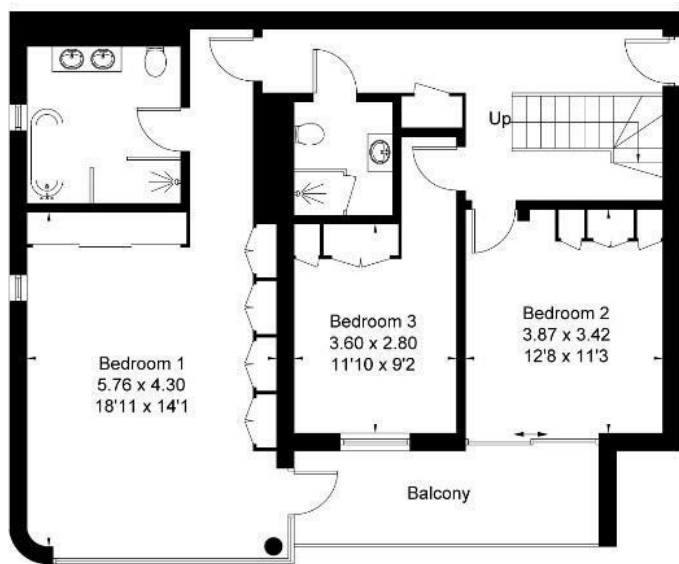
KEY FEATURES

- Amazing beachside location • Close to Branksome Beach
- 3 bedroom duplex penthouse with direct lift access
- 2 stylish bathrooms • Guest cloakroom
- Separate utility room
- 36ft kitchen/living/dining area
- Fantastic 913 sq ft roof terrace with sea glimpses
- Secure underground parking for 2 vehicles
- 2 personal store rooms • No forward chain

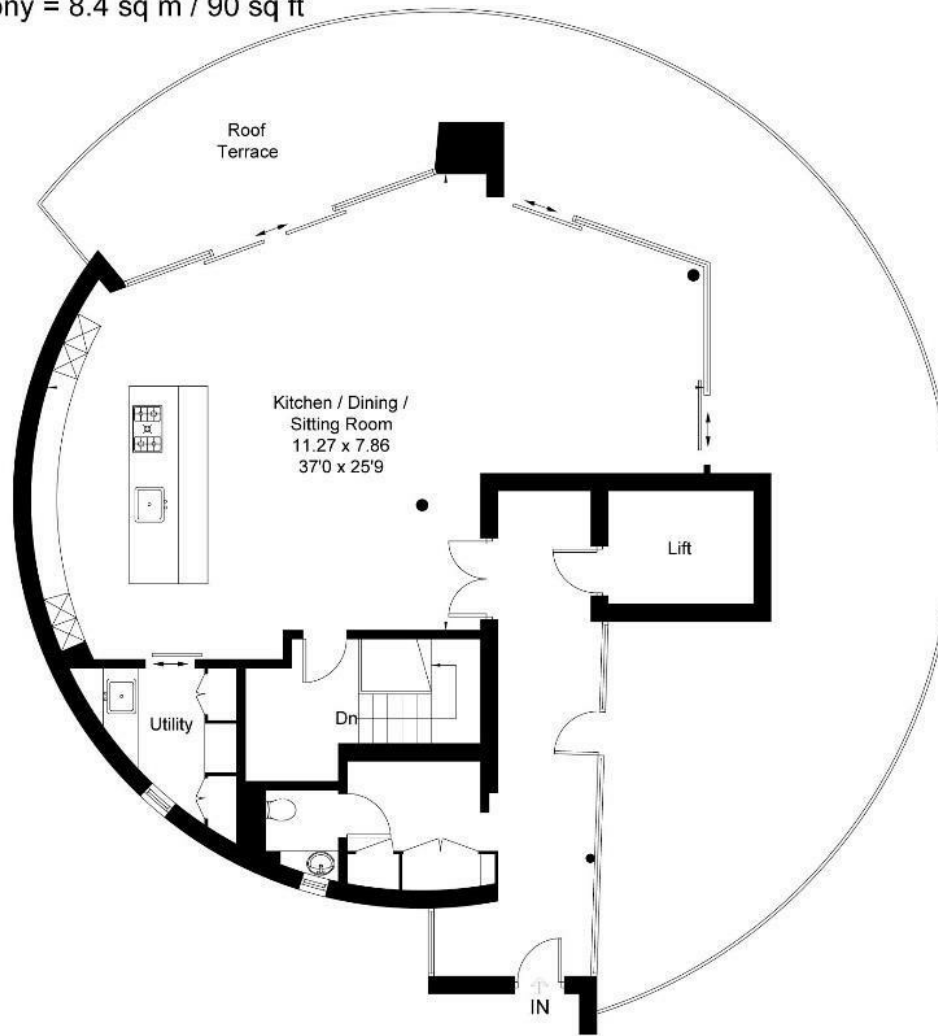
Approximate Area = 195.7 sq m / 2106 sq ft
 Stores = 12.7 sq m / 137 sq ft
 Total = 208.4 sq m / 2243 sq ft
 Roof Terrace = 84.8 sq m / 913 sq ft
 Balcony = 8.4 sq m / 90 sq ft



(Not Shown In Actual Location / Orientation)



Second Floor



Third Floor

LLOYDS

Important notice Lloyds Property Sales Ltd, its clients and any joint agents give notice that 1: They are not authorised to make or give any representations or warranties in relation to the property either here or elsewhere, either on their own behalf or on behalf of their client otherwise. They assume no responsibility for any statement that may be made in these particulars. These particulars do not form part of any offer or contract and must not be relied upon as statements or representations of fact. 2: Any areas, measurements or distances are approximate. The text, photographs and plans are for guidance only and are not necessarily comprehensive. It should not be assumed that the property has all necessary planning, building regulation or other consents and Lloyds Property Sales have not tested any services, equipment or facilities. Purchasers must satisfy themselves by inspection or otherwise.