

DALGARNO GARDENS, W10



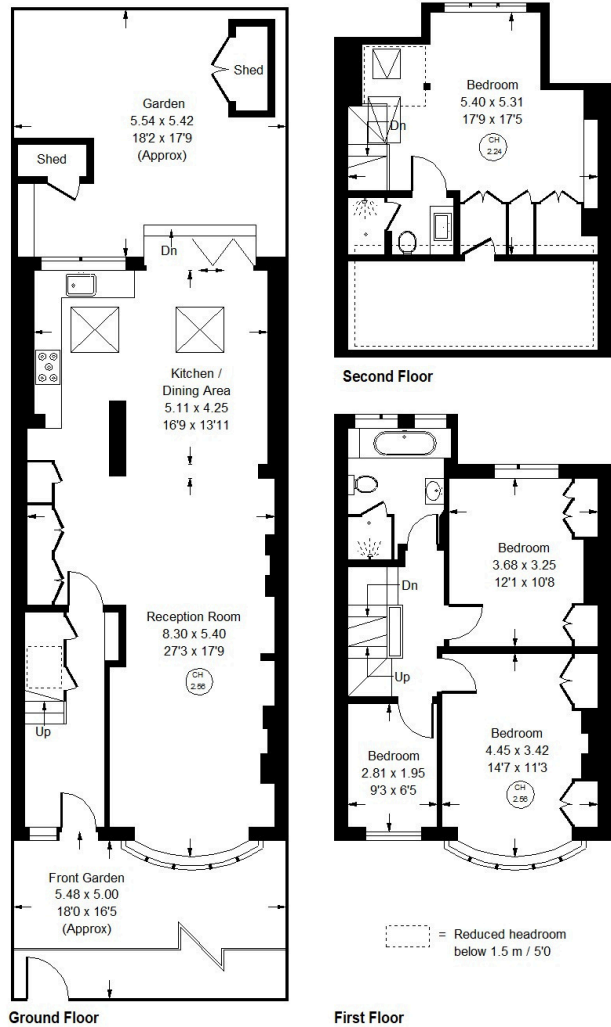


Dalgarno Gardens, W10

A bright family house, ideally positioned near the open green spaces of Kensington Memorial Park in the Royal Borough. The house offers a fantastic open-plan living space on the ground floor perfect for entertaining and everyday family life. The kitchen extension leads to the mature south-facing garden. The first floor is arranged with two double bedrooms; a third bedroom or study and the loft has been converted to create an elegant principal suite with south-facing views. Dalgarno Gardens is conveniently located just off Highlever Road in North Kensington, close to the open spaces of Little Wormwood Scrubs. Excellent transport links are available from nearby White City (Central Line) and Latimer Road (Hammersmith & City Line).



Approx. Gross Internal Area
= 151.8 sq m / 1,634 sq ft



Dalgarno Gardens, W10 - Freehold

Local Authority - Royal Borough of Kensington & Chelsea

- Four bedrooms
- Two bathrooms
- Great Lateral Living Space
- South-facing Garden
- EPC: D
- Council tax band: E



Whilst every attempt has been made to ensure the accuracy of the floor plan, measurements are approximate and not to scale. No guarantee is given on the total square footage of the property quoted on the plan. Figures given are for guidance. Plan is for illustration purposes only, not to be used for valuations.