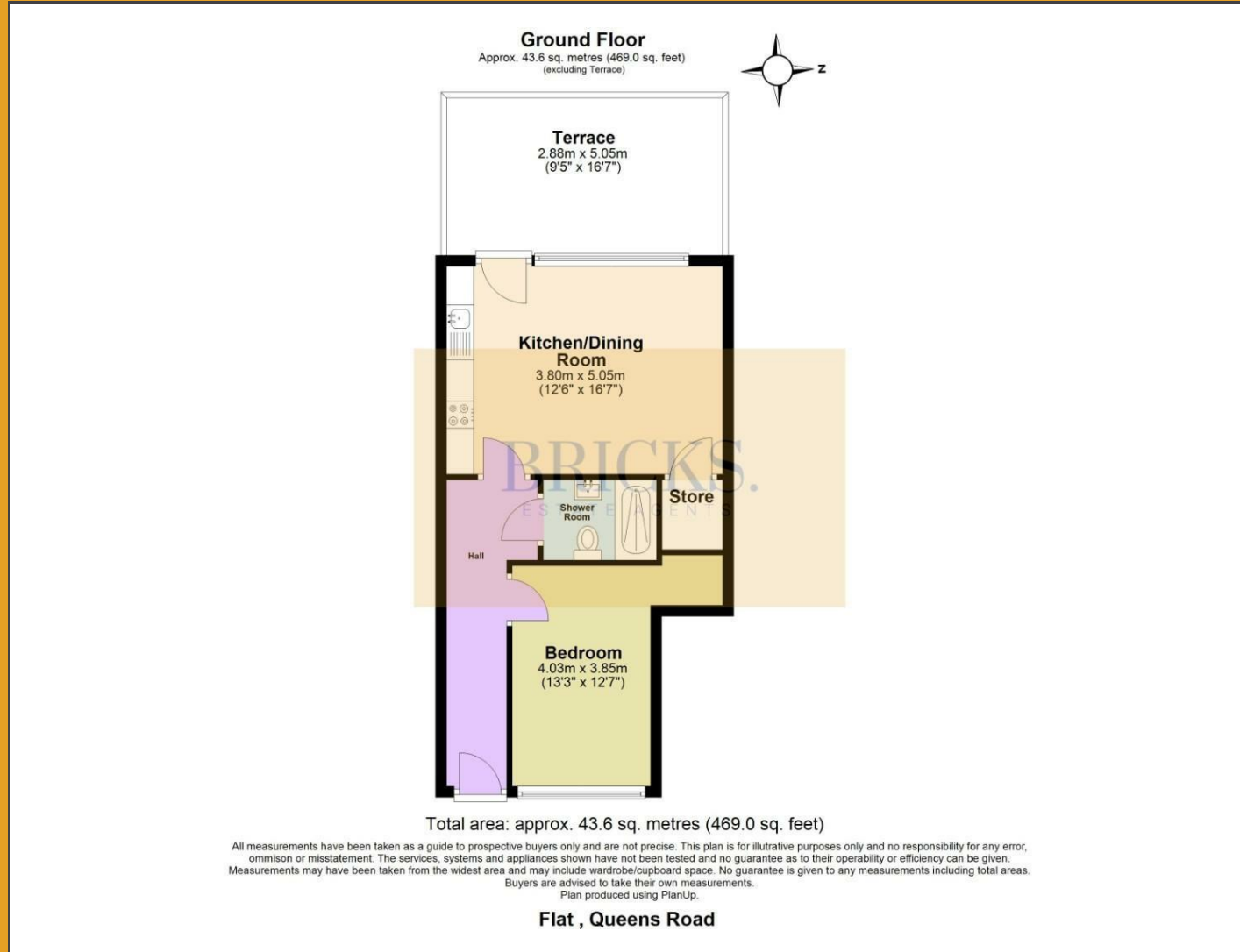


# Floor Plan

# BRICKS.

ESTATE AGENTS






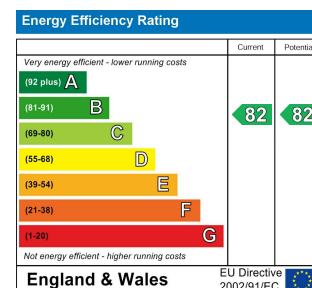
BRICKS.  
ESTATE AGENTS

£365,000

These particulars, whilst believed to be accurate are set out as a general outline only for guidance and do not constitute any part of an offer or contract. Intending purchasers should not rely on them as statements of representation of fact, but must satisfy themselves by inspection or otherwise as to their accuracy. No person in this firm's employment has the authority to make or give any representation or warranty in respect of the property.

## Contact Us

-  0203 634 9998
-  [hello@bricksestateagents.co.uk](mailto:hello@bricksestateagents.co.uk)
-  186 Queens Road, Buckhurst Hill, Essex, IG9 5BD



## Buckhurst Mews Queens Road, Buckhurst Hill, IG9 5BW

Bricks Estate Agents are delighted to introduce this outstanding, design-led apartment, quietly tucked away within an exclusive private mews just off the ever-prestigious Queen's Road in Buckhurst Hill. A home that effortlessly combines cutting-edge technology with refined, high-end finishes, setting a new benchmark for modern living in the area.

# Buckhurst Mews Queens Road, Buckhurst Hill, IG9 5BW

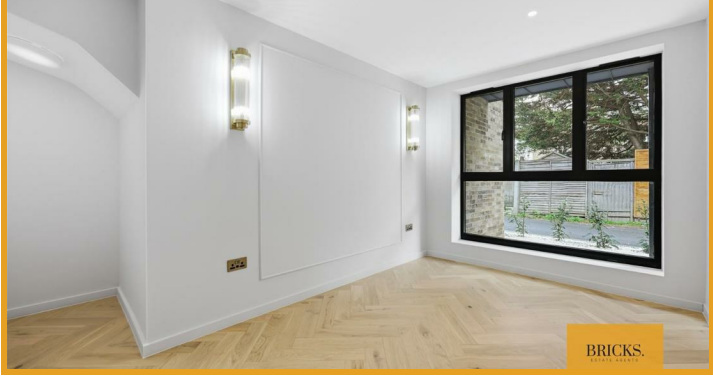
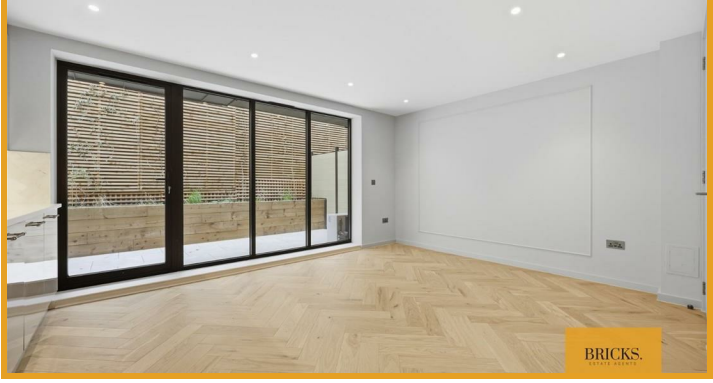
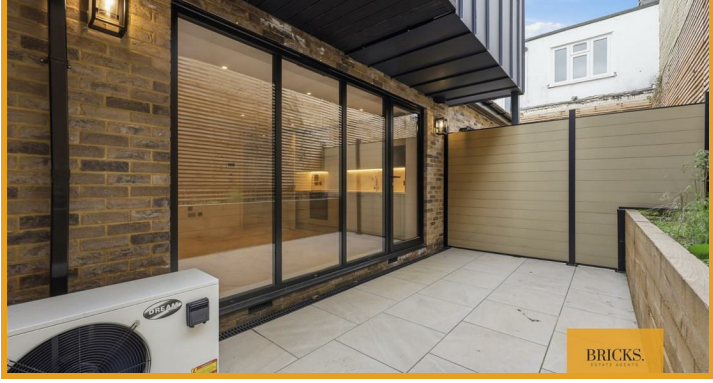


- **\*\*WATCH OUR VIDEO TOUR\*\***
- Expansive 21 Ft Open-Plan Living Space Perfect For Entertaining
- Elegant Interior Finish Featuring Marble, Quartz And Oak Herringbone Flooring
- High-End Bathroom With Calacatta Marble And Premium Hans Grohe Fixtures
- Energy Efficient Air Source Heating Offering Lower Running Costs
- Architecturally Designed Apartment Finished To An Exceptional Standard
- Bespoke Designer Kitchen With Quartz Worktops And Integrated Bosch Appliances
- Luxurious Double Bedroom With Intelligent Ambient Lighting System
- Smart Home Living With App And Alexa Controlled Underfloor Heating
- EV-Ready Parking And Moments From Epping Forest And Central Line Access

**Bedroom**  
13'2" x 12'7" (4.03m x 3.85m )

**Kitchen/Dining Room**  
12'5" x 16'6" (3.80m x 5.05m )

**Terrace**  
9'5" x 16'6" (2.88m x 5.05m )



**Directions**

**BRICKS.**  
ESTATE AGENTS