

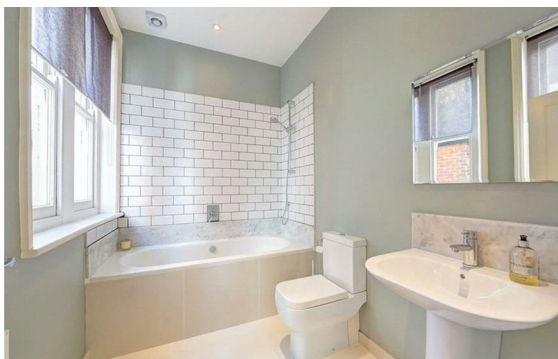
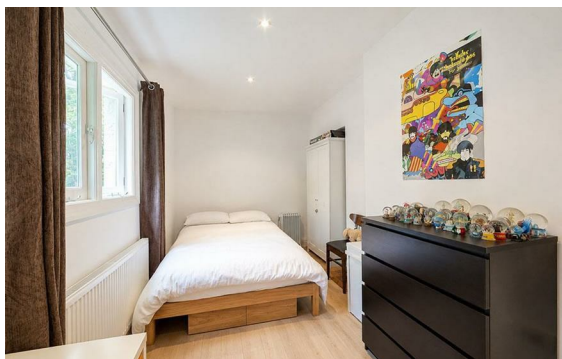


Nottingham Terrace, Marylebone, London, NW1

Rent £900 PCM

2 Bed | 2 Bath | 1 Reception

Please call us on 020 7724 2233 or email us info@newingtonstates.com to book a viewing.



A spacious two-bedroom apartment offering comfortable living accommodation and a practical layout in a prime central London setting. Positioned on the lower ground floor, the property features a bright reception room, a fitted kitchen, and two generously sized double bedrooms. The principal bedroom benefits from an en-suite shower room, complemented by a separate bathroom. Ample storage and good natural light enhance the overall practicality of the apartment.

Residents also enjoy access to landscaped private gardens and porter service. Ideally located close to Baker Street Station and within easy reach of Regent's Park.

EPC Rating: E

Energy Efficiency Rating: E

Agents Note: Whilst every care has been taken to prepare these particulars, they are for guidance purposes only. All measurements are approximate and are for general guidance purposes only and whilst every care has been taken to ensure their accuracy, they should not be relied upon and potential buyers/tenants are advised to recheck the measurements.

NEWINGTON
— ESTATES —

60 Upper Montagu Street

London

W1H 1SN

020 7724 2233

info@newingtonstates.com

<http://www.newingtonstates.com>