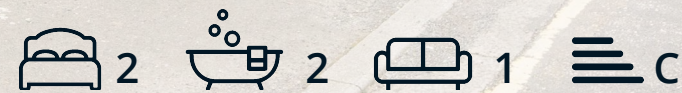




47 New Street
, Matlock, DE4 3FH

£875 PCM



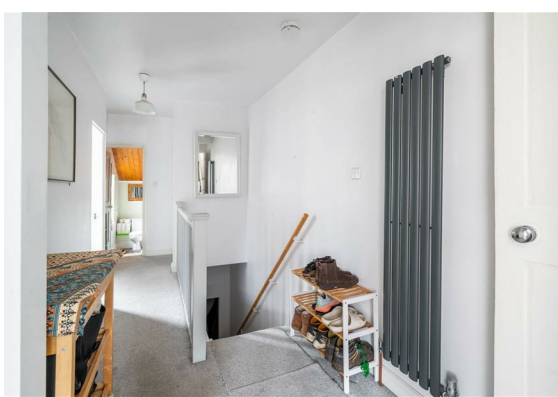
47 New Street

, Matlock, DE4 3FH

A well presented two-bedroom duplex flat, ideally situated within easy reach of the town centre.

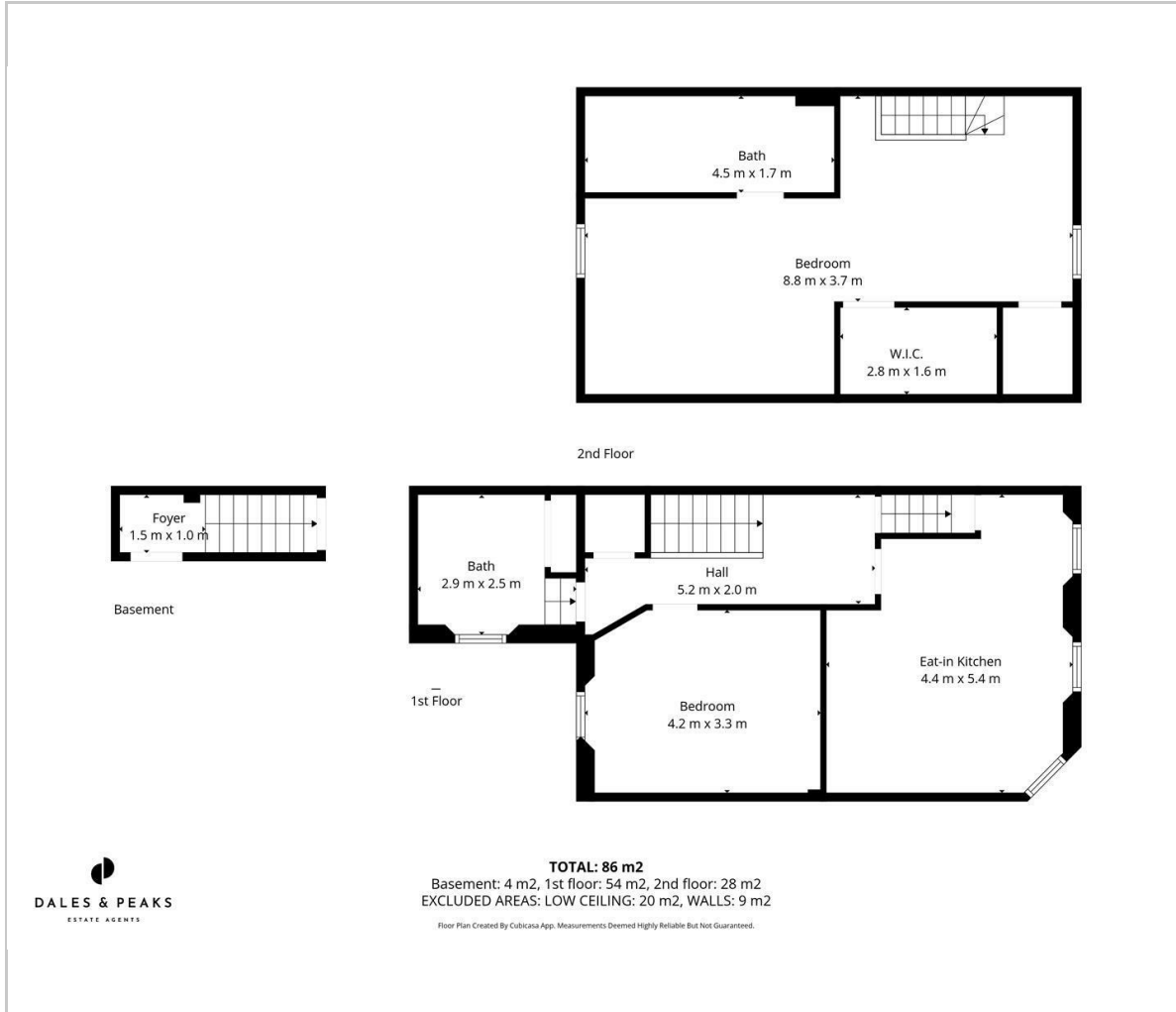
The property features an open-plan lounge, kitchen, and dining area, along with a double bedroom and a bathroom. Stairs lead to the spacious top floor master suite, complete with a walk-in wardrobe and en-suite.

Please note: electricity and water are charged at an additional £60 per month on top of the rent.





Floor Plan

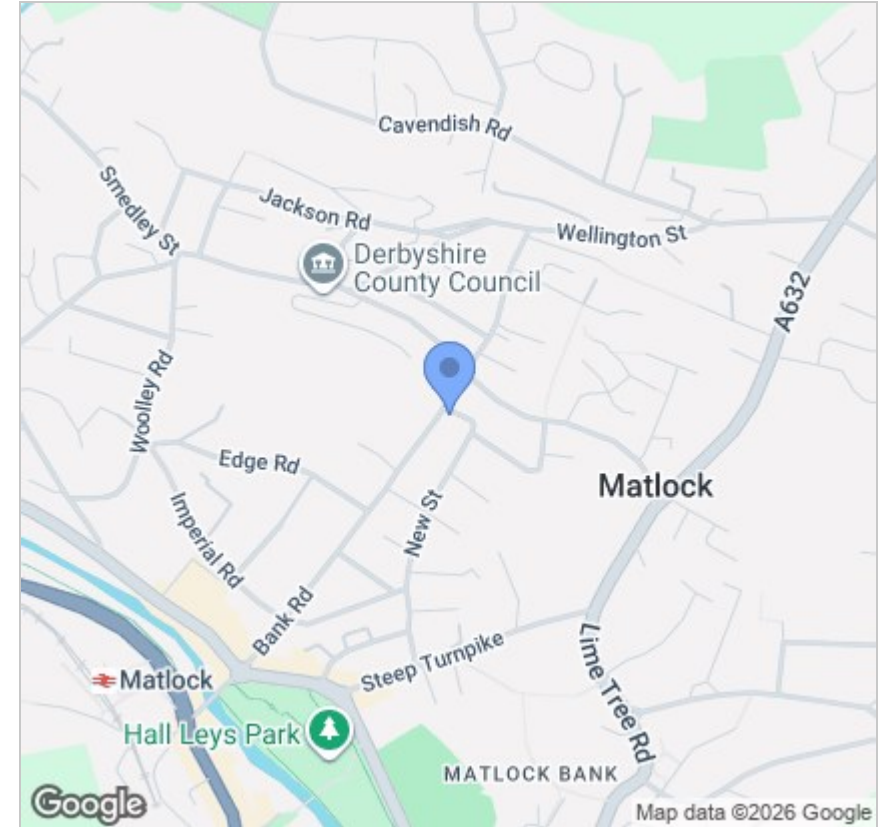


Viewing

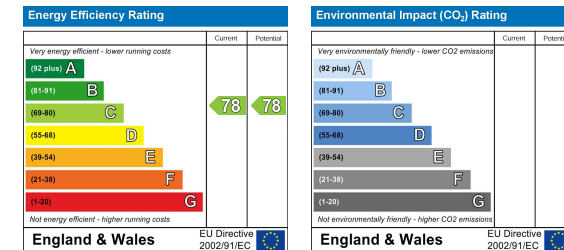
Please contact our Chesterfield Office on 01246 567540 if you wish to arrange a viewing appointment for this property or require further information.

These particulars, whilst believed to be accurate are set out as a general outline only for guidance and do not constitute any part of an offer or contract. Intending purchasers should not rely on them as statements of representation of fact, but must satisfy themselves by inspection or otherwise as to their accuracy. No person in this firm's employment has the authority to make or give any representation or warranty in respect of the property.

Area Map



Energy Efficiency Graph



131 Chatsworth Road, Chesterfield, Derbyshire, S40 2AP
 T: 01246 567540

E: info@dalesandpeaks.co.uk
 www.dalesandpeaks.co.uk