



Webbs  
Helping people move since 1994

**Jackson Close | Cannock | WS11 9PN**

**Offers Over £260,000**



## Summary

**\*\* SPACIOUS DETACHED HOME \*\* THREE GENEROUS BEDROOMS \*\* ENCLOSED REAR GARDEN \*\* EXCELLENT SCHOOLS AND TRANSPORT LINKS \*\* DOUBLE LENGTH GARAGE \*\* KITCHEN DINER \*\* WALK IN PANTRY AND GUEST WC \*\* VIEWING ESSENTIAL \*\***

Webbs Estate Agents are delighted to offer for sale this spacious detached family home, ideally located in the popular village of Norton Canes. The property benefits from excellent transport links, nearby schools, shops and local amenities, with Chasewater Country Park just a short distance away. The accommodation briefly comprises an entrance hallway with useful under-stairs storage, a front-facing lounge, and to the rear a well-proportioned kitchen diner with walk-in pantry and guest WC.

To the first floor are three generously sized bedrooms and a family bathroom. Externally, the property features an enclosed rear garden with gated rear access. The extended garage provides a large workshop area and parking space, with an additional parking space to the rear of the garage, offering ample off-road parking. Viewing is highly recommended to fully appreciate the size, potential, and location of this excellent home.

## Key Features

- SPACIOUS DETACHED HOME
- EXCELLENT SCHOOLS AND TRANSPORT LINKS
- CLOSE TO CHASEWATER COUNTY PARK
- WALK IN PANTRY AND GUEST WC
- VIEWING ESSENTIAL
- THREE GENEROUS BEDROOMS
- FRONT AND ENCLOSED REAR GARDEN
- LARGE KITCHEN DINER
- DOUBLE LENGTH GARAGE FOR 2 CARS

## Rooms and Dimensions

### ENTRANCE HALLWAY

### SPACIOUS LOUNGE

17'6" x 9'10" (5.343 x 3.014)

### LARGE KITCHEN DINER

20'6" x 8'6" (6.259 x 2.602)

### WALK IN PANTRY AND GUEST WC

### LANDING

### BEDROOM ONE

16'7" x 9'11" (5.055 x 3.042)

### BEDROOM TWO

16'3" x 9'10" (4.973 x 3.007)

### BEDROOM THREE

8'9" x 6'8" (2.686 x 2.0412)

### BATHROOM

7'11" x 5'5" (2.438 x 1.655)

### FRONT AND ENCLOSED REAR GARDEN

### DOUBLE LENGTH GARAGE FOR 2 CARS

35'0" x 11'3" (10.67 x 3.439)

### IDENTIFICATION CHECKS - C





Webbs  
Helping people move since 1994



Webbs  
Helping people move since 1994



Webbs  
Helping people move since 1994



Webbs  
Helping people move since 1994



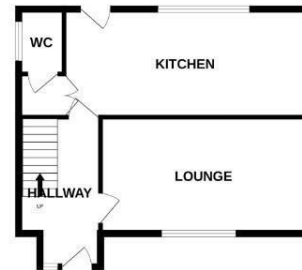
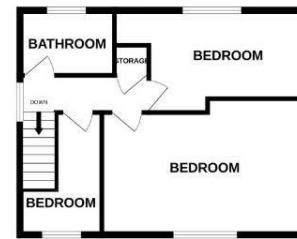
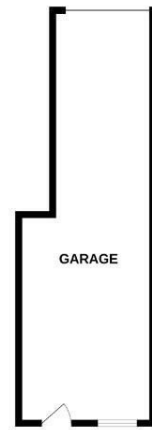
Webbs  
Helping people move since 1994



Webbs  
Helping people move since 1994

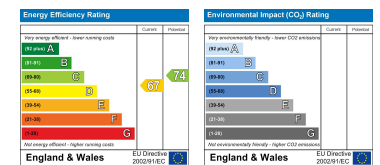
GROUND FLOOR

1ST FLOOR



Whilst every attempt has been made to ensure the accuracy of the floorplan contained here, measurements of doors, windows, rooms and any other items are approximate and no responsibility is taken for any error, omission or mis-statement. This plan is for illustrative purposes only and should be used as such by any prospective purchaser. The services, systems and appliances shown have not been tested and no guarantee as to their operability or efficiency can be given.  
Made with Metropix ©2025.

Webbs Estate Agents - endeavour to maintain accurate depictions of properties in Virtual Tours, Floor Plans and descriptions, however, these are intended only as a guide and purchasers must satisfy themselves by personal inspection.



153 Avon Road, Cannock, WS11 1LF

Tel: 01543 468846 | Email: sales@webbestateagents.co.uk | www.webbestateagents.co.uk

