



Websters
estate agents

Wilcox Road, Teddington, TW11 0SW

Semi Detached 3 bedroom family home with a garage, driveway parking, a south facing garden and no onward chain. Situated in a popular residential location within 0.5 miles of Stanley, St James's, St Mary's & St Peter's and Waldegrave Girls School/Co-ed Sixth Form.

Extended at the side and rear to offer 1361 sq ft of well proportioned living space over 2 floors (including the garage) with potential to further extend and loft convert (subject to Planning Permission and Building Regulations). Tastefully presented and well maintained with modern fixtures, fittings and floorings, double glazed windows and pleasing neutral decor throughout.

Front porch opens into the entrance hallway with access to the spacious open plan living room with areas for seating and dining, a modern fitted kitchen and a door into the family/sun room at the rear. This light filled room has large windows overlooking the garden, a w.c and doors at the side onto the low maintenance south facing garden with planting, shed storage and access through the garage to the front garden.

On the first floor are 3 double bedrooms with built in wardrobes, the family shower room and access to loft storage.

Located 0.2 miles from Fulwell train station and just 0.6 miles from Teddington Town Centre and Hampton Hill High Street.

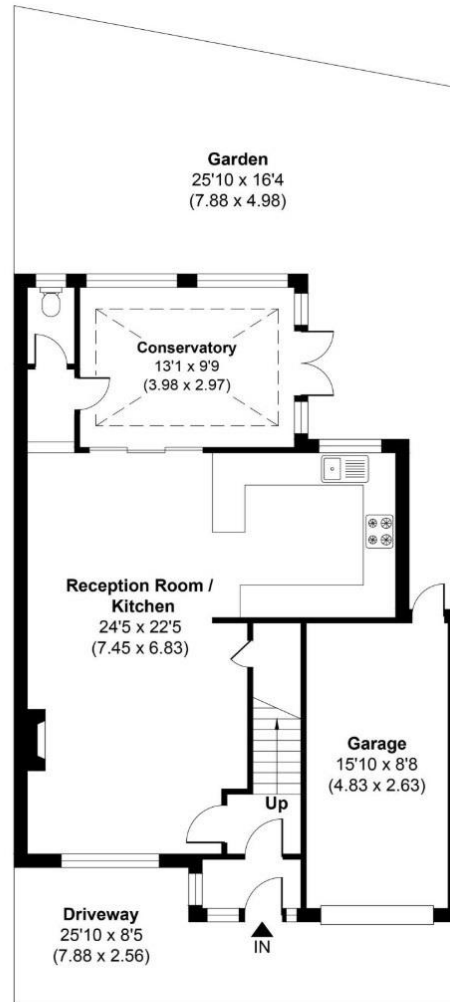
EPC Rating D

- Semi Detached 3 Double Bedroom Home
- No Onward Chain
- Garage and Driveway Parking
- Spacious Open Plan Living Room
- Tastefully Presented Throughout
- Potential to Extend and Loft Convert (stpp)
- Close to Numerous Popular Schools
- 0.2 Miles from Fulwell Train Station

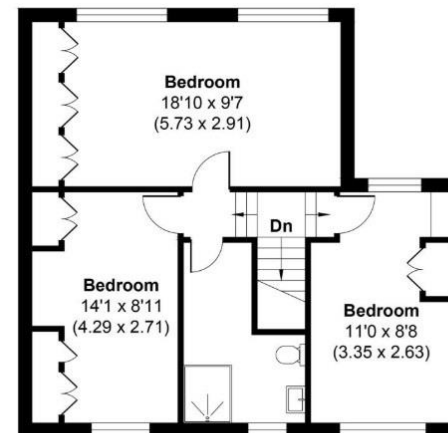


WILCOX ROAD

APPROX. GROSS INTERNAL FLOOR AREA 1361 SQ FT / 126.40 SQ METRES
(INCLUDES GARAGE)



GROUND FLOOR
APPROX. FLOOR AREA
806 SQ.FT. (74.84 SQ.M.)



FIRST FLOOR
APPROX. FLOOR AREA
555 SQ.FT. (51.56 SQ.M.)

[a Websters Estate Agents 36 Broad Street, Teddington, Middlesex TW11 8QY](http://www.websters.co.uk) [t 020 8614 6000](tel:02086146000) [e sales@mywebsters.co.uk](mailto:sales@mywebsters.co.uk) [w mywebsters.co.uk](http://www.mywebsters.co.uk)

Disclaimer

These particulars, whilst believed to be accurate are set out as a general outline only for guidance and do not constitute any part of an offer or contract. Intending purchasers should not rely on them as statements of representation of fact, but must satisfy themselves by inspection or otherwise as to their accuracy. We have not carried out a detailed survey nor tested the services, appliances and specific fittings. Room sizes should not be relied upon for carpets and furnishings. The measurements given are approximate. No person in this firm's employment has the authority to make or give any representation or warranty in respect of the property.

