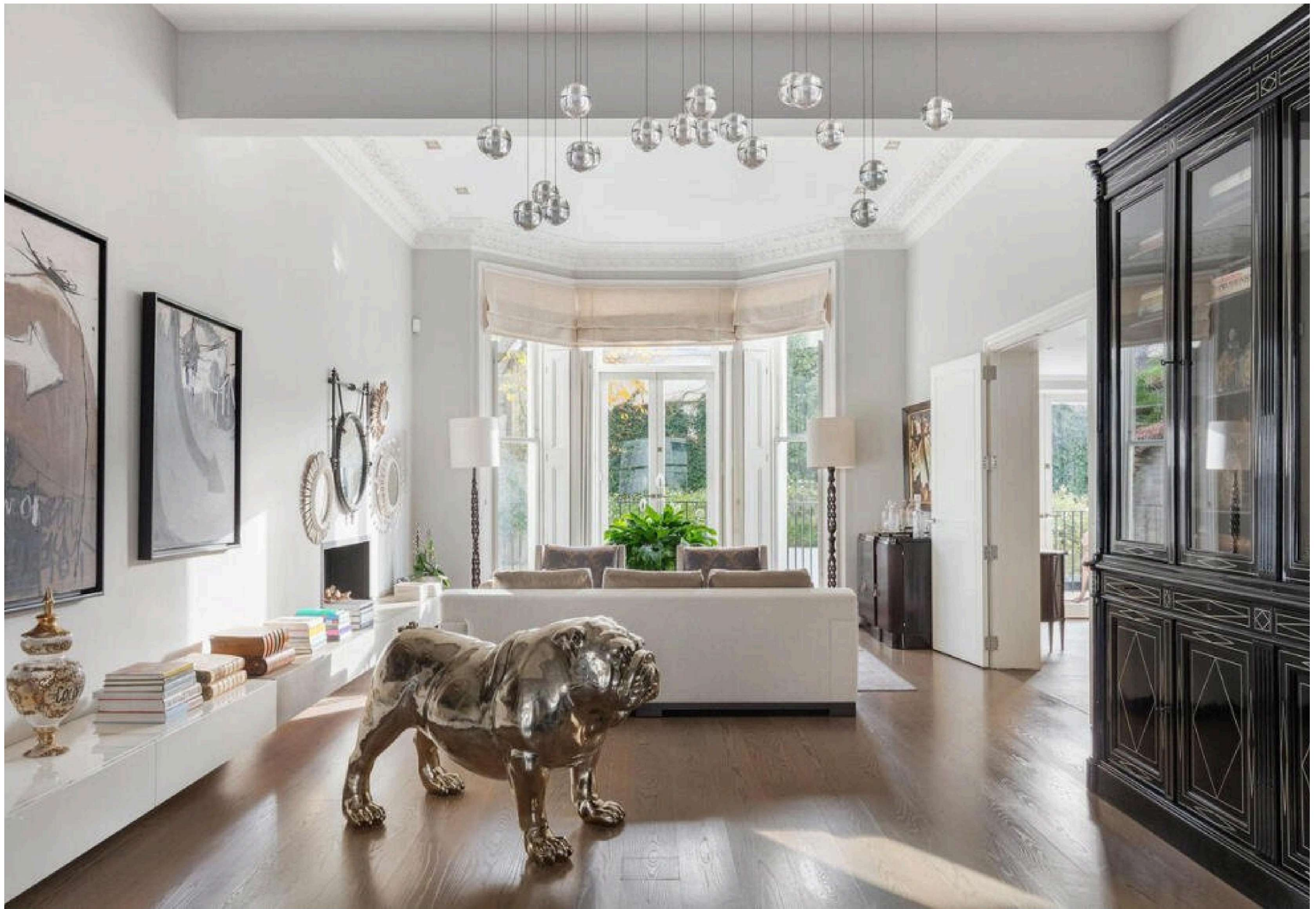


CHESTERTONS





Holland Park

Holland Park, W11 3RS

“Elegant period apartment in the heart of Holland Park, set over the raised and lower ground floors with impressive ceiling heights and an abundance of natural light. Features south-facing garden, four bedrooms, gym, media room as well as air conditioning in all bedrooms.”

£7,500 per week / £32,500 per month

4

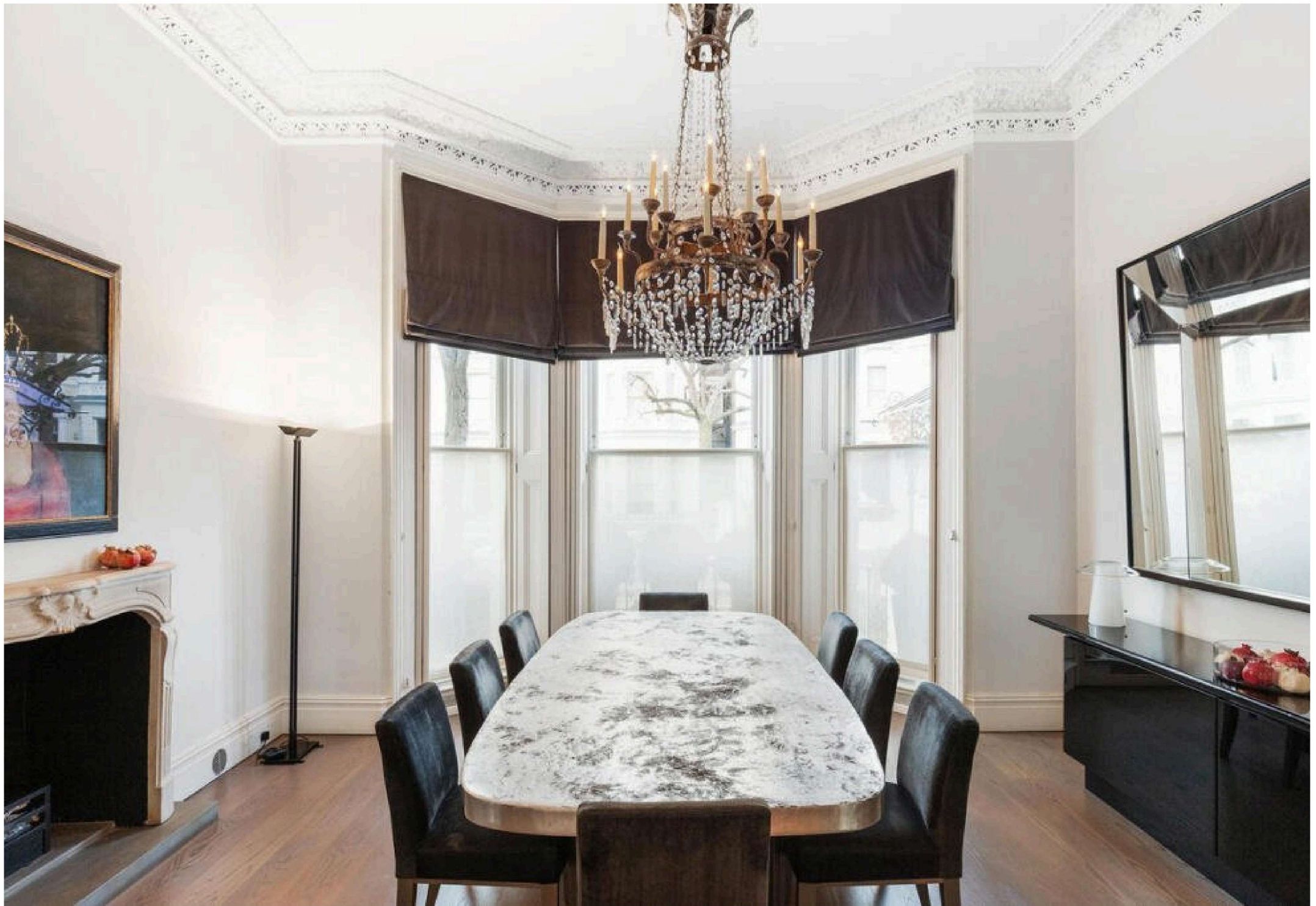


5



5,124
sq ft





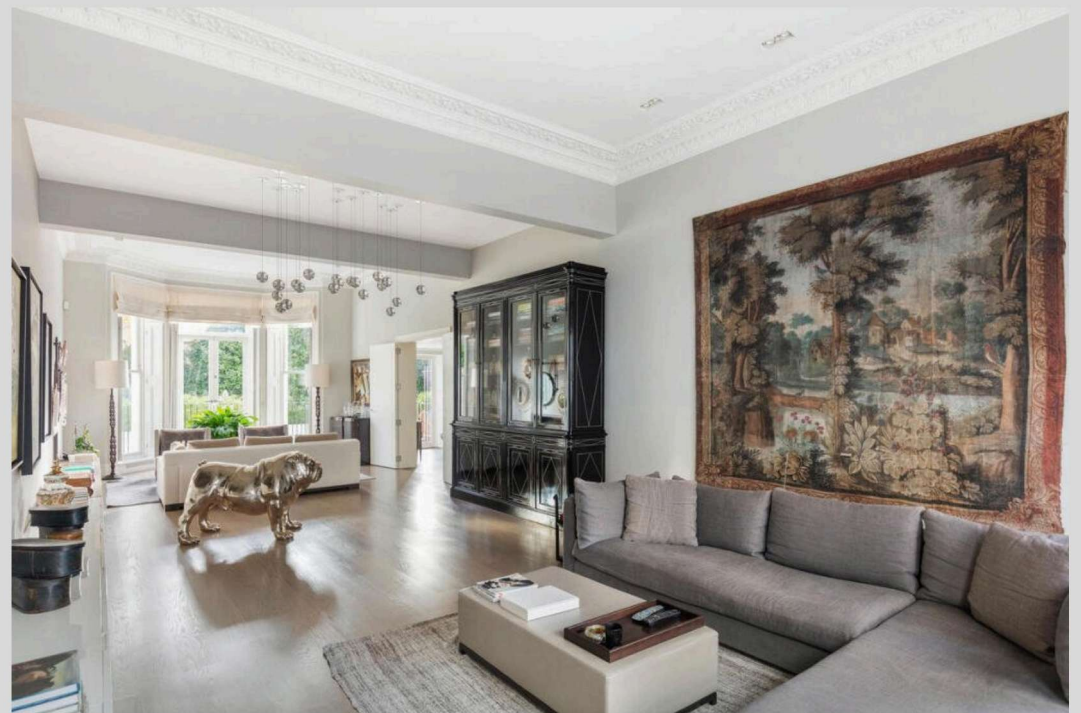
Property Description

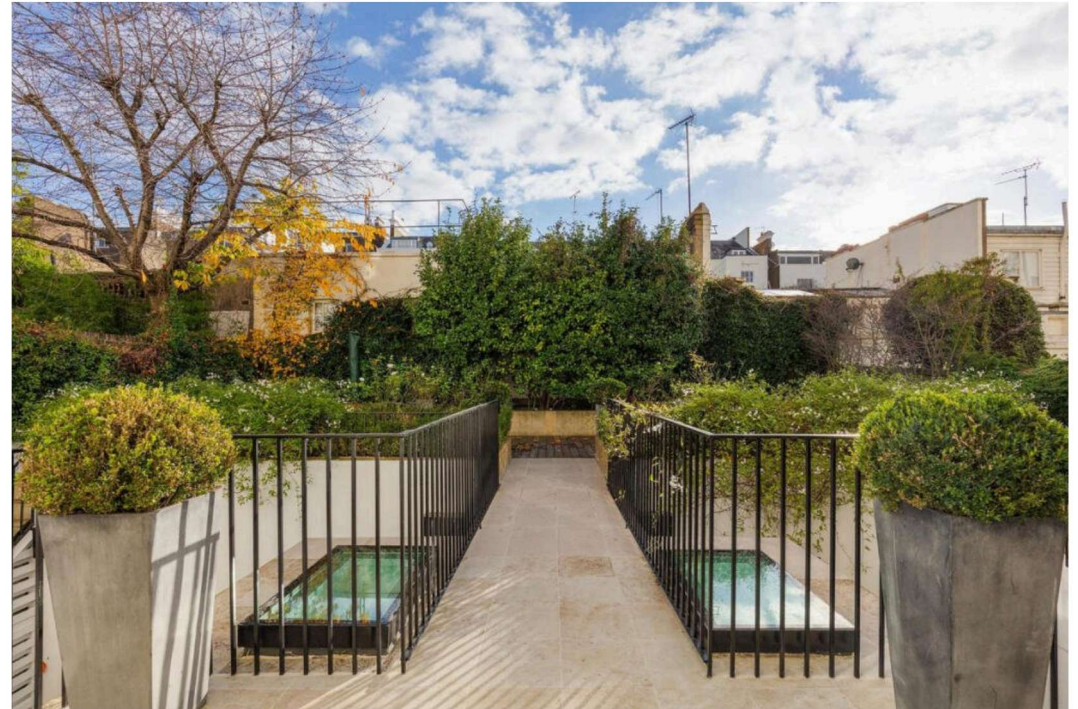
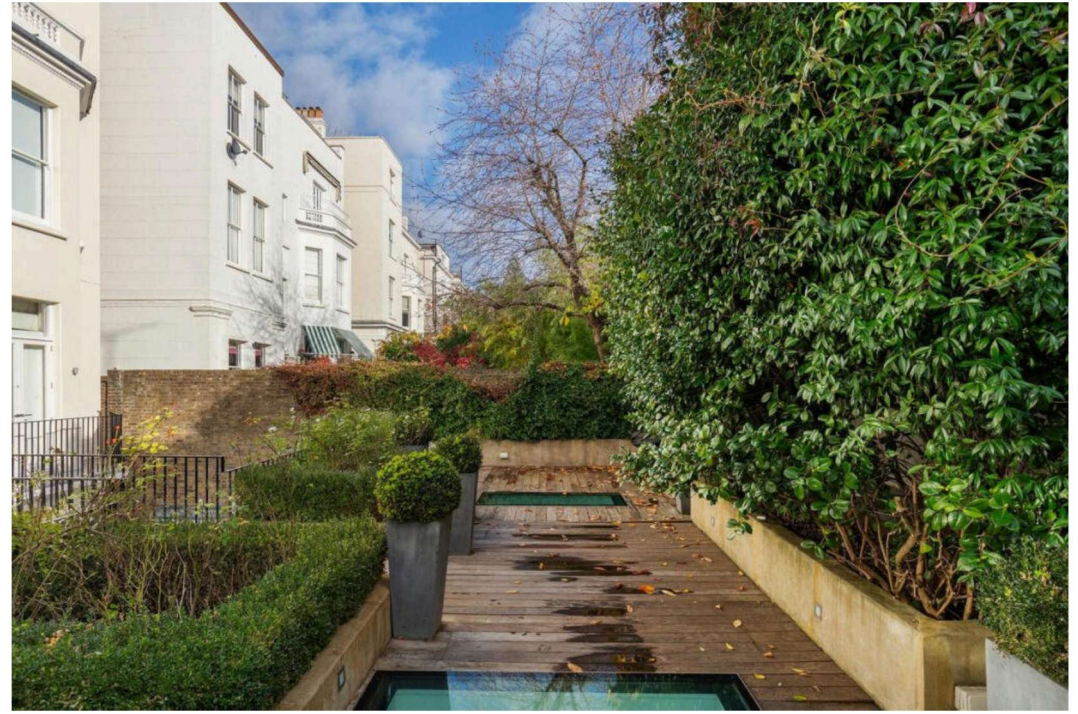
Set in the very centre of Holland Park, this beautifully presented period apartment is rich in character and refined detail. The home enjoys impressive ceiling heights throughout, elegant bay windows at the front and rear flood the principal reception room and bedrooms with natural light. The entire lower ground floor benefits from air conditioning.

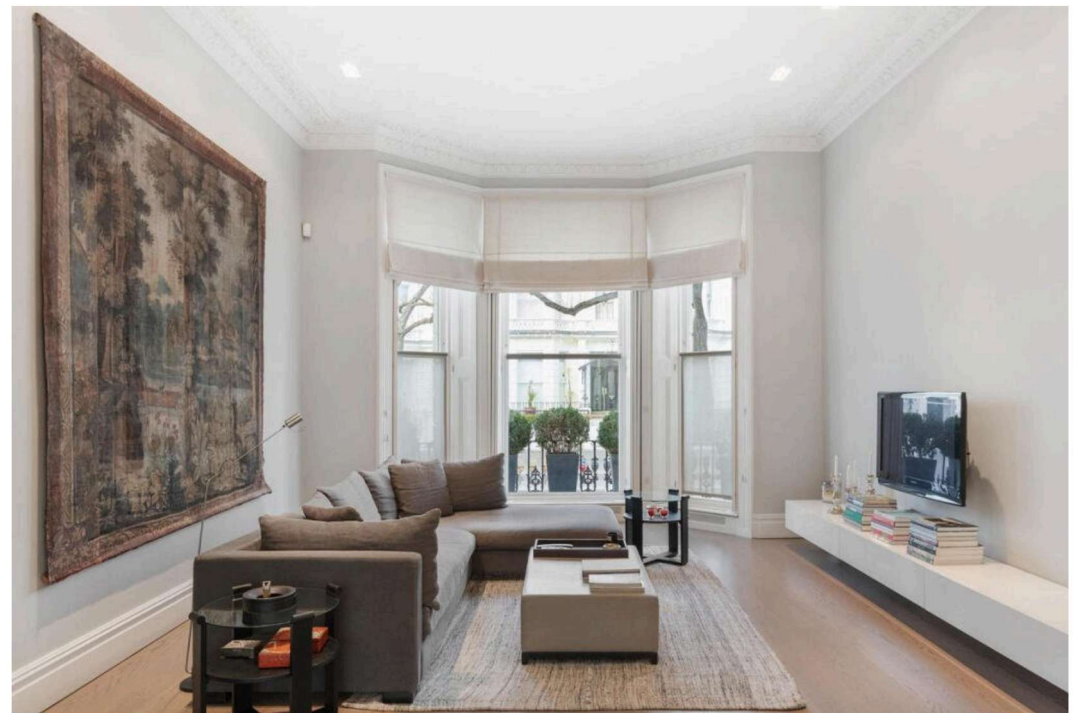
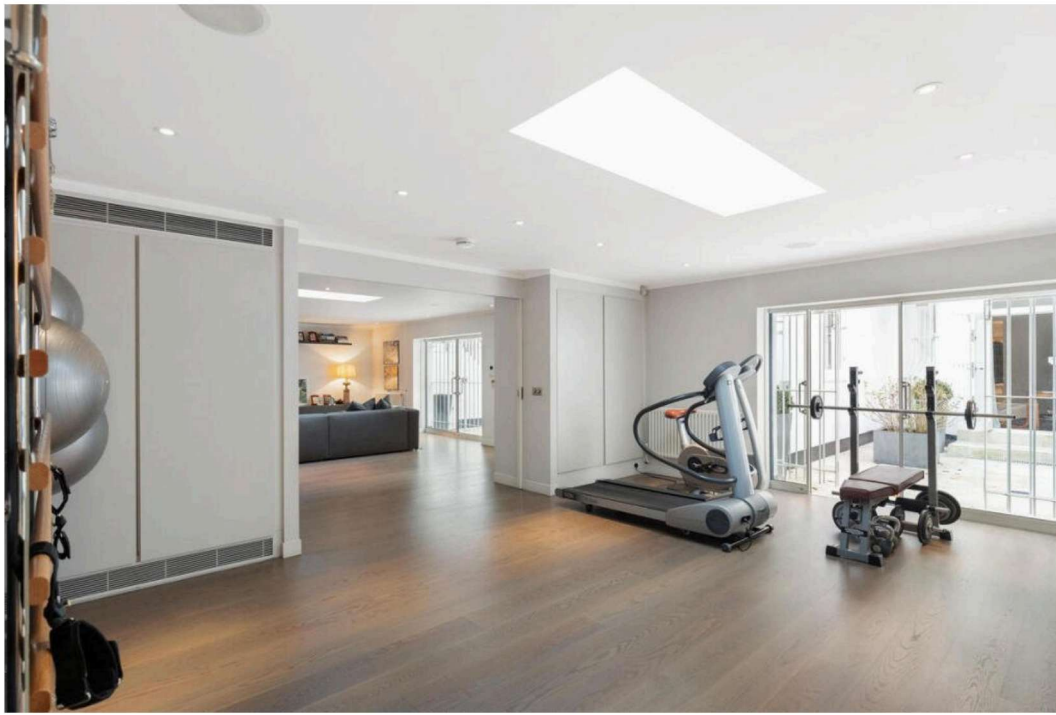
Accessed via an impressive staircase beneath a traditional cast-iron and glass Victorian canopy, the apartment opens from the main hallway of this handsome building. The raised ground floor offers exceptional living and entertaining space, including a striking double reception room, a beautifully appointed kitchen complete with premium Gaggenau appliances, a separate dining room and a well-proportioned study. French doors open onto a wonderfully secluded south-facing garden.

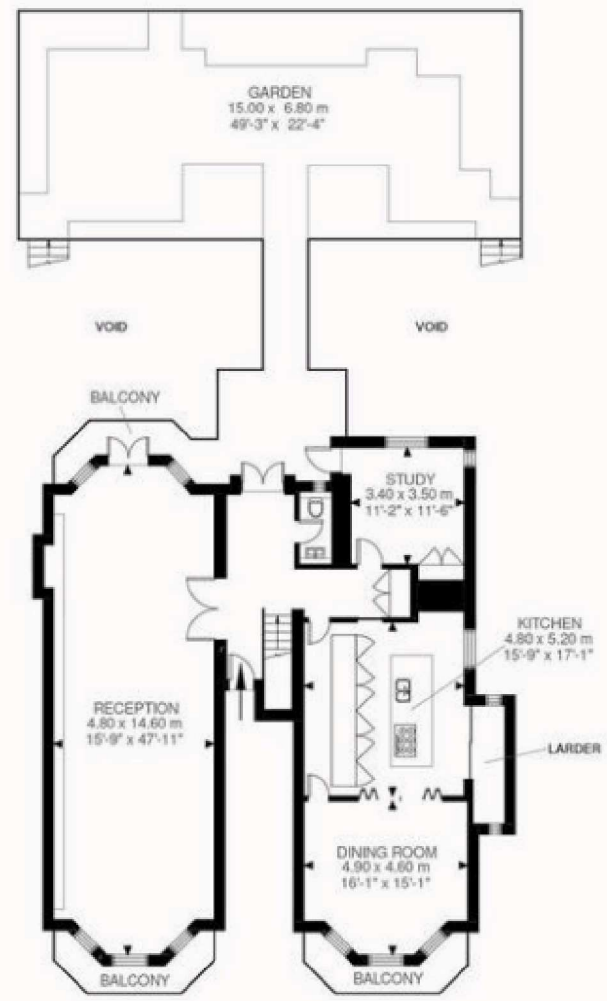
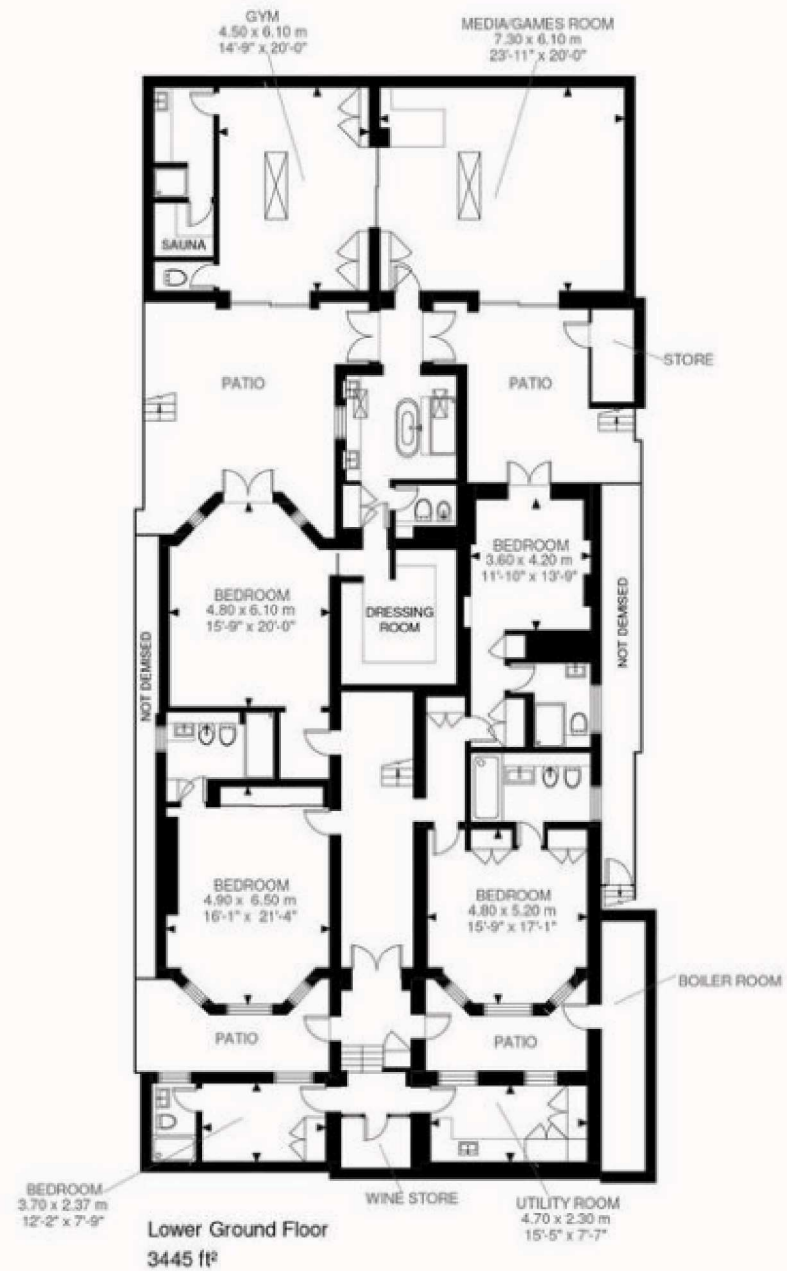
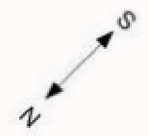
The principal suite features a dressing room and an en-suite bathroom, accompanied by three further spacious en-suite bedrooms and an additional staff bedroom. Additionally, an impressive annexe houses a substantial media room and gym with bathroom and sauna. There is also a utility room, wine cellar and external storage.

Positioned along one of the most desirable tree-lined streets in Holland Park, the property is surrounded by beautiful period architecture and greenery. The park itself is moments away and Holland Park Underground station (Central line) is nearby.









Holland Park, W11
 Approximate Gross Internal Area
 476.00 SQ.M / 5124 SQ.FT
 (EXCLUDING BOILER ROOM/STORE)
 BOILER ROOM/STORE 15.00 SQ.M / 161 SQ.FT
 INCLUSIVE TOTAL AREA 491.00 SQ.M / 5285 SQ.FT

Illustration for identification purposes only. Not to scale.
 Floor Plan Drawn According To RICS Guidelines.