



## Manor Road

Offers in the region of £150,000

- Two Bedrooms
- Spacious Reception Room with Brick Fireplace
- Family Bathroom with Bath and Shower
- Rear Garden
- Kitchen
- Walking Distance to Local Schools
- Good Transport Links
- EPC Rating: D



2 1 1

**Pinkmove**

01633 746088  
team@pinkmove.co.uk





## About the property

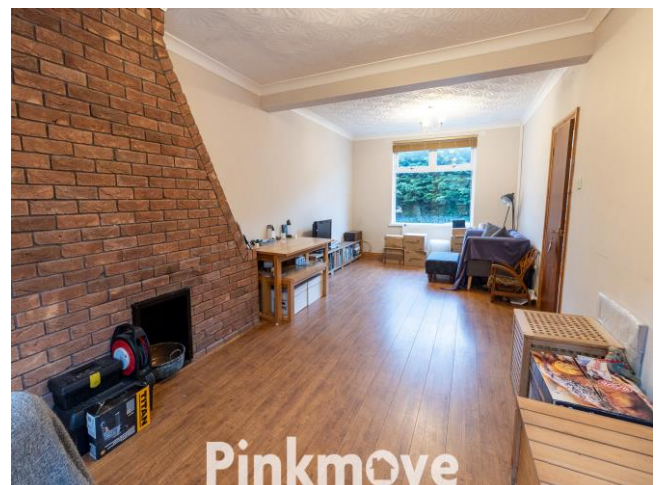
Nestled along Manor Road in the heart of Abersychan, this charming two-bedroom terraced home offers a welcoming blend of character, comfort and convenience.

The surrounding area provides an appealing community setting with nearby amenities offering everyday essentials close to home. Families will appreciate the proximity to Abersychan Comprehensive School, easily accessible from the property. Commuters benefit from strong transport links, with Pontypool and New Inn railway station situated approximately 5 kilometres away, as well as several local bus stops.

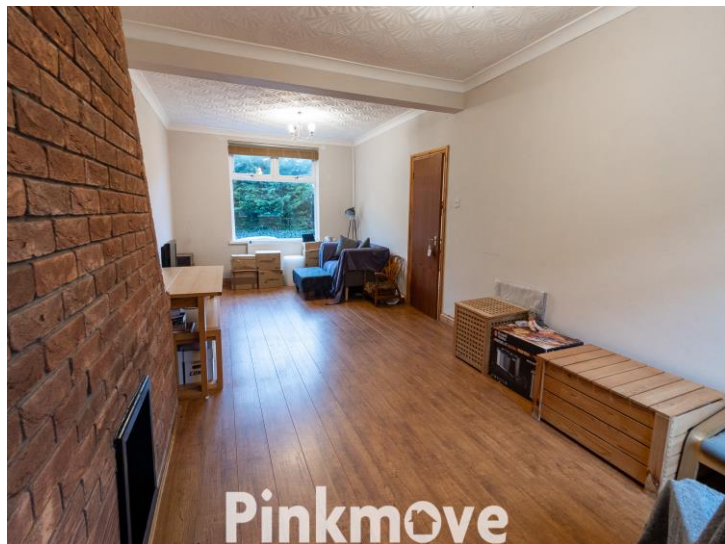
Inside, the ground floor features a spacious reception room that welcomes you with its rustic brick fireplace, creating a homely focal point, while a useful rear storage cupboard offers practicality. The kitchen sits at the rear of the property and leads directly out to the garden, making it ideal for outdoor dining and relaxation.

Upstairs, you will find two versatile bedrooms that can be used as comfortable sleeping spaces, guest rooms or home offices. A well-appointed family bathroom completes the first floor, offering both a bath and a shower for added convenience.

Altogether, this property combines cosy living with excellent access to Abersychan's local shops, respected schooling and reliable transport options, making it an appealing choice for first-time buyers, small families or those seeking a well-located home in a beautiful Welsh community.







## Accommodation

### Lounge/Diner

24' 4" x 11' 7" ( 7.42m x 3.53m )

### Kitchen

12' 3" x 5' 9" ( 3.73m x 1.75m )

### Bedroom 1

11' 2" x 17' 11" ( 3.40m x 5.46m )

Max Measurements

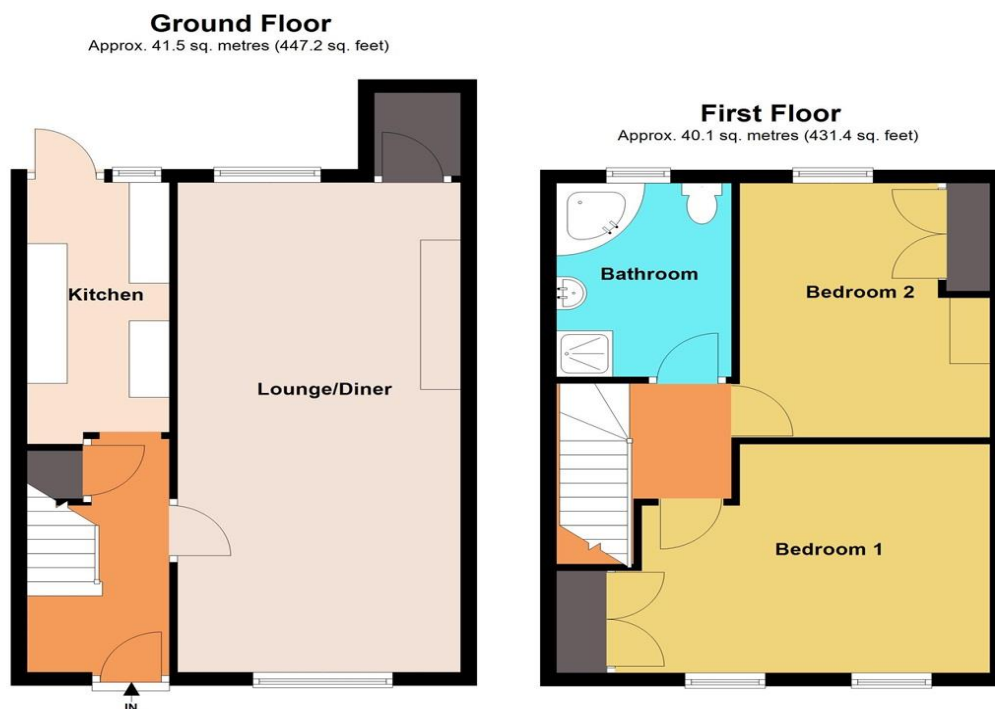
### Bedroom 2

12' 8" x 10' 2" ( 3.86m x 3.10m )

### Bathroom

9' 7" x 7' 2" ( 2.92m x 2.18m )

## Floorplan



Total area: approx. 81.6 sq. metres (878.6 sq. feet)  
**175 Manor Road**

## Important Information

Note while we endeavour to make our sales details accurate and reliable, if there is any point which is of particular interest to you, please contact the office and we will be pleased to confirm the position for you. We have not personally tested any apparatus, equipment, fixtures, fittings or services and cannot verify they are in working order or fit for their purposes. Nothing in these particulars is intended to indicate that carpets or curtains, furnishings or fittings, electrical goods (whether wired or not). Gas fires or light fittings or any other fixtures not expressly included form part of the property offered for sale. This computer generated Floorplan, if applicable, is intended as a general guide to the layout and design of the property. It is not to scale and should not be relied upon for dimensions. Tenure: We cannot confirm the tenure of the property as we have not had access to the legal documents. The buyer is advised to obtain verification from their solicitor or surveyor.

Peter Alan Limited is registered in England and Wales under company number 2073153, Registered Office is Cumbria House, 16-20 Hockliffe Street, Leighton Buzzard, Bedfordshire, LU7 1GN. VAT Registration Number is 500 2481 05. For activities relating to regulated mortgages and non-investment insurance contracts, Peter Alan Limited is an appointed representative of Connells Limited which is authorised and regulated by the Financial Conduct Authority. Connells Limited's Financial Services Register number is 302221. Most buy-to-let

