



THORNBURY ROAD, SW2

£3,100 PCM

- End of terrace house
- Double reception
- Kitchen/breakfast room
- Private garden
- Cellar
- Energy rating: D





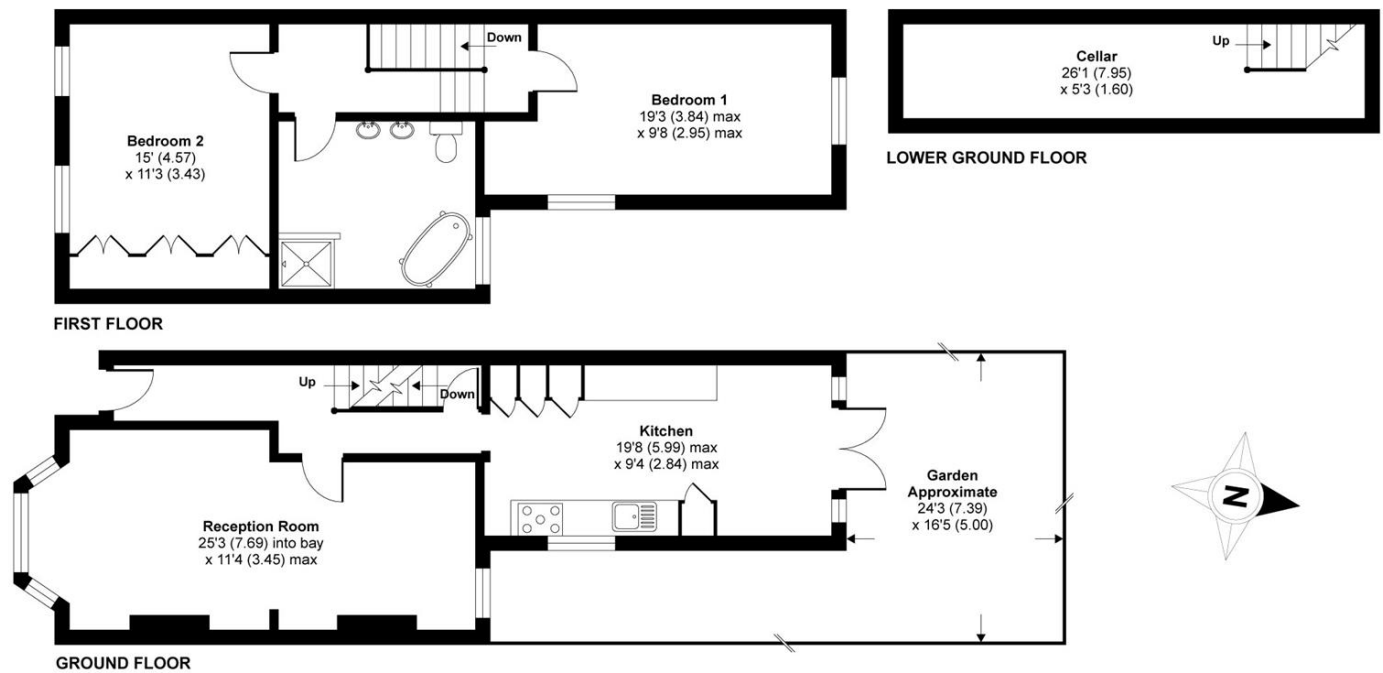
ABOUT THE HOME

A stylish end-of-terrace Victorian house located on a quiet residential road, offering ample entertainment space, two generously sized double bedrooms, large bathroom and a private garden. Suitable for a professional couple or two sharers, the property further benefits from a cellar.

Thornbury Road is situated within close proximity to Clapham High Street (Windrush line) Overground, Clapham North (Northern line) and Brixton (Victoria line) Underground stations providing direct commutes to both the City and West End, while multiple bus routes run from nearby Brixton Hill. The shops, cafés and recreational amenities of Clapham High Street and Brixton are also within easy reach.







APPROX. GROSS INTERNAL FLOOR AREA 1223 SQ FT 113.6 SQ METRES

Thornbury Road, London, SW2

Copyright nichecom.co.uk 2017 Produced for Jacksons the Independent Estate Agents REF : 185529

JACKSONS CLAPHAM

73 Abbeville Road, London,
SW4 9JN
Sales: 020 8487 3177
Lettings: 020 8487 3178

Energy Rating: D We aim to make our particulars both accurate and reliable. However they are not guaranteed; nor do they form part of an offer or contract. If you require clarification on any points then please contact us, especially if you're traveling some distance to view. Please note that appliances and heating systems have not been tested and therefore no warranties can be given as to their good working order.