



Fairlight Road, SW17

£695,000

An impeccable two double bedroom ground floor maisonette in exacting condition throughout with a stunning open plan kitchen/reception room and a private garden.

Fairlight Road is a quiet tree lined residential street moments away from central Tooting with a vast array of shops, bars and restaurants within walking distance. Easy access to the City can be found via Tooting Broadway Underground station which is a short stroll away.

Features

- Two Double Bedrooms
- Stunning Interior
- Share of Freehold
- Private Garden
- Fitted Kitchen
- Desirable Location



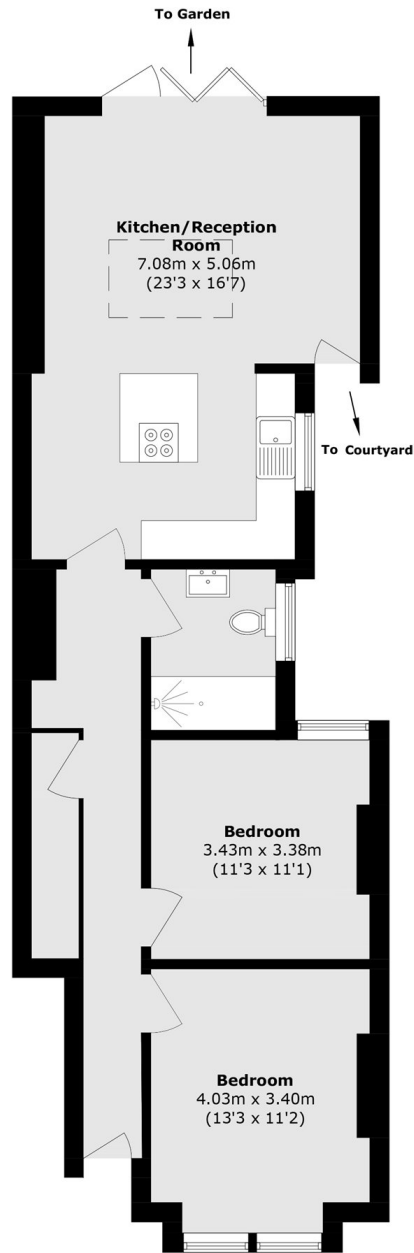
Fairlight Road, SW17

Having undergone extensive refurbishment, the property opens onto two very well & comfortable double bedrooms with the heart of the home positioned at the rear. A beautifully crafted open-plan kitchen takes centre stage with fitted wall and base units, a larder unit, integral appliances, solid worktops and a breakfast island.

Full width bifolding doors open onto a landscaped garden ideal for outdoor enjoyment and hosting.



Fairlight Road, London, SW17



Total area (approx.): 76.4 sq. m (822.3 sq. ft)