



Peninsula Quay, Pegasus Way, Gillingham ME7 1GJ

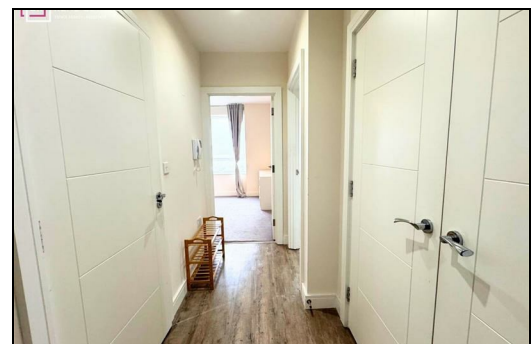
£200,000

Situated on the third floor of the highly sought-after Peninsula Quay waterfront development in Gillingham, this stylish one-bedroom apartment offers contemporary living with stunning direct river views, and is offered to the market with no onward chain.

Perfectly suited as a first-time purchase or investment opportunity, the property features a generous living area with access to a private balcony. The modern fitted kitchen comes complete with integrated appliances, creating a sleek and practical space for everyday living.

The spacious double bedroom benefits from a built-in wardrobe, while the well-presented bathroom and neutral décor throughout enhance the apartment's turnkey appeal.

Residents of Peninsula Quay enjoy access to excellent on-site amenities including a communal WiFi lounge, fully equipped gym, and secure underground parking. Call now to arrange your appointment to view.



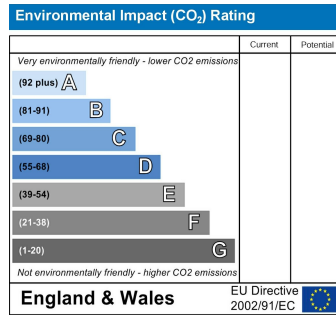
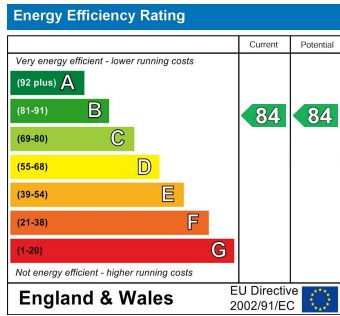
Entrance Hall

Living Room 14'8 x 12'10 (4.47m x 3.91m)

Kitchen 8'3 x 6'4 (2.51m x 1.93m)

Bedroom 10'5 x 10'3 (3.18m x 3.12m)

Bathroom 6'8 x 6'3 (2.03m x 1.91m)



ESTATE AGENCY : REDEFINED

