



Victoria Road, RM1

£270,000

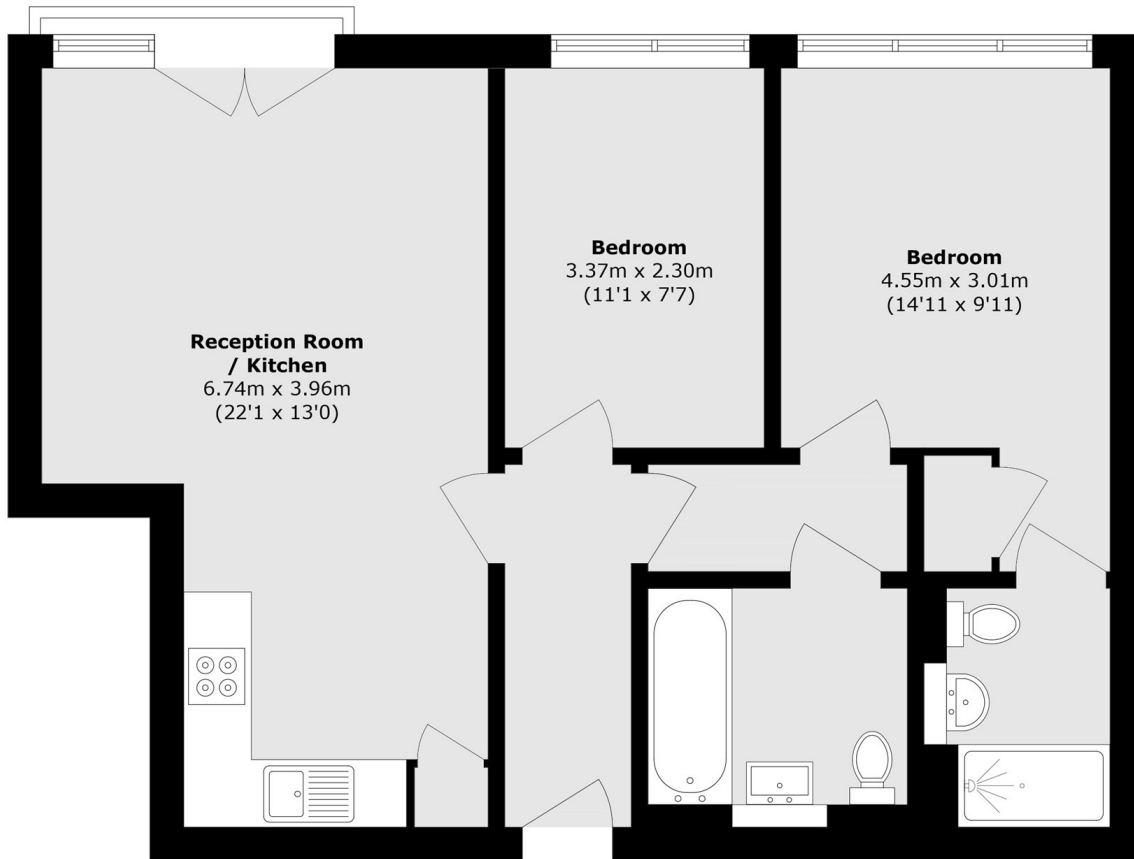
We are pleased to present this bright, two bedroom apartment equipped with an open plan kitchen/living space. The property features a modern kitchen with integrated appliances, a secure entry phone system, one parking space and 645 Square Feet of internal living space. A Juliet balcony is also accessible via the reception.

Portman House is 0.1 miles away from Romford station (2 minute walk) which grants access to the London Overground, the Elizabeth line and the national rail. Residents will also be in close proximity to local amenities such as a Lidl which is also 0.1 miles away.

Features

- 645 Square Feet
- Allocated Parking
- Integrated Appliances
- Modern Throughout
- Juliet Balcony
- Easy Access To Transport

Victoria Road, Romford, RM1



Total area (approx.): 60.0 sq. m (645.8 sq. ft)