



**WHITLOCKS**  
ESTATE AGENTS

Frensham Avenue, Poplars Court, Bognor Regis  
£170,000



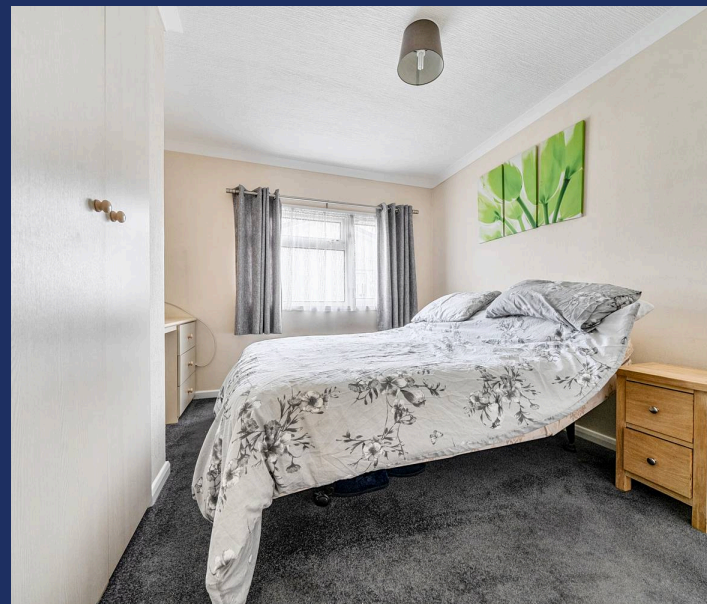
This beautifully presented detached park home is situated within a highly sought-after development for the over 50s, offering a peaceful lifestyle with excellent convenience.

The accommodation comprises two well-proportioned double bedrooms, both benefitting from fitted wardrobes, whilst the principal bedroom enjoys an en-suite shower room. A generous dual-aspect living and dining room creates a bright and welcoming space, complemented by a well-appointed kitchen/breakfast room and a modern family bathroom.

Further benefits include UPVC double glazing, gas-fired central heating, and ample built-in storage throughout.

Externally, the property enjoys a private south-facing patio garden designed for low maintenance and enclosed by mature hedging. To the side, a brick-paved driveway provides off-road parking for two vehicles and leads to a garage with power and lighting.

Conveniently located close to local amenities, supermarkets, and transport links, this charming home presents an excellent opportunity for those seeking comfortable, low-maintenance living within a friendly and well-connected community.



- Detached residential park home on a highly sought-after development
- Exclusively for residents aged 50 and over
- Two double bedrooms, both with fitted wardrobes
- Master Bedroom with en-suite Shower Room
- Spacious lounge and dining area
- Fitted kitchen and breakfast room
- Garage with Power and Lighting
- UPVC double glazing and gas-fired central heating
- South-facing, low-maintenance patio garden with mature hedging
- Brick-paved driveway with off-road parking for two vehicles.

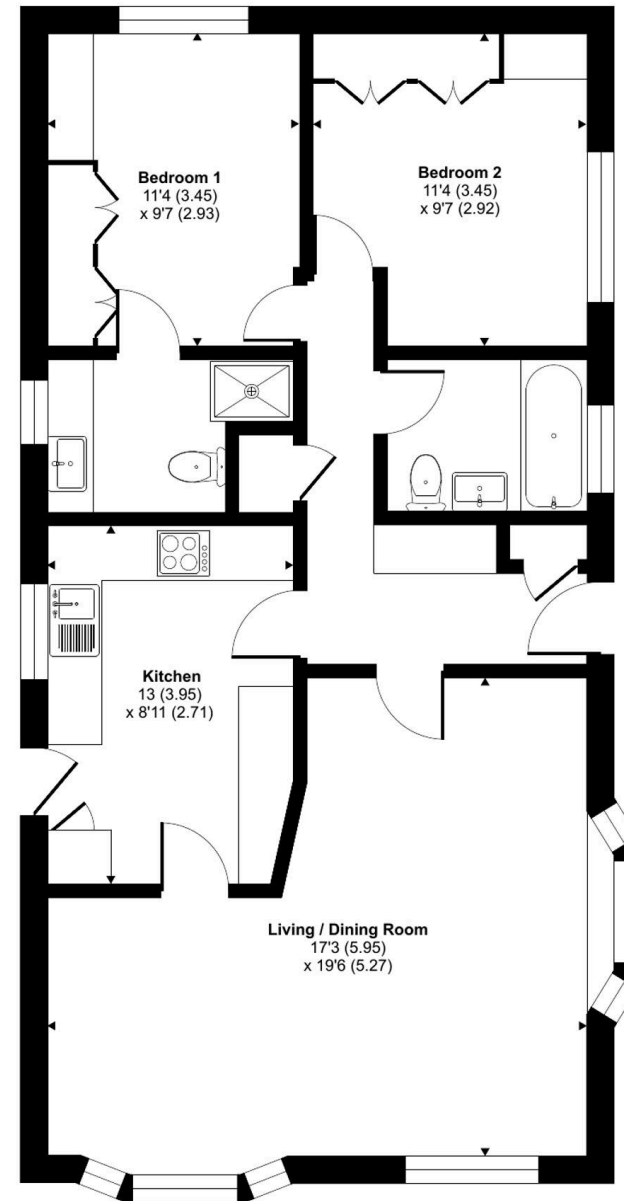
Bognor Regis, famously known for being a popular destination amongst holiday makers, seeking a traditional seaside Town full of Ice Cream, Seafood, Rock Sticks and Crazy Golf! Home to the ever popular Butlins, a holiday resort which includes a vast amount of entertainment for all ages – the tourist attraction benefits from indoor and outdoor pools, rides, shows, restaurants, bars, accommodation and many more! The Town itself also offers a variety of shops, restaurants, pubs, cafes, parks and activities, as well as the picturesque Sea Front, Pier, Sailing Club and Promenade where you can stroll through to Felpham and Aldwick. Chichester, Arundel and Littlehampton are nearby as well as fantastic transport links to London Victoria and Gatwick Airport, also benefitting from a small hospital.

Whitlock Estate Agents Limited trading as Whitlocks Estate Agents for themselves and for the vendor or lessors of this property whose agents they are, give notice that (i) these particulars do not constitute any part of an offer or contract, (ii) all statements contained within these particulars are made without responsibility on the part of Whitlocks Estate Agents or the vendor, (iii) whilst made in good faith, none of the statements contained within these particulars are to be relied upon as a statement or representation of fact, (iv) any intending purchasers must satisfy themselves by inspection or otherwise as to the correctness of each of the statements contained within these particulars, (v) the vendor does not make or give either Whitlocks Estate Agents or any person in their employment any authority to make or give representation or warranty whatsoever in relation to this property. Wide angle lenses may be used.

## Frensham Avenue, Poplars Court, Bognor Regis, PO22

Approximate Area = 803 sq ft / 74.6 sq m

For identification only - Not to scale



GROUND FLOOR



Floor plan produced in accordance with RICS Property Measurement 2nd Edition, Incorporating International Property Measurement Standards (IPMS2 Residential). © nctechcom 2026. Produced for Whitlocks Estate Agents. REF: 1463221





## Whitlocks Estate Agents - Bognor Regis & Pagham

Whitlocks Estate Agents, 229 Pagham Road - PO21 3QD

01243 262747 • sales@whitlocksestateagents.co.uk • whitlocksestateagents.co.uk/

Council Tax band: A

Tenure: Non-Traditional Tenure

EPC Energy Efficiency Rating: N/A