



Campbell Road, E3

£496 Per week

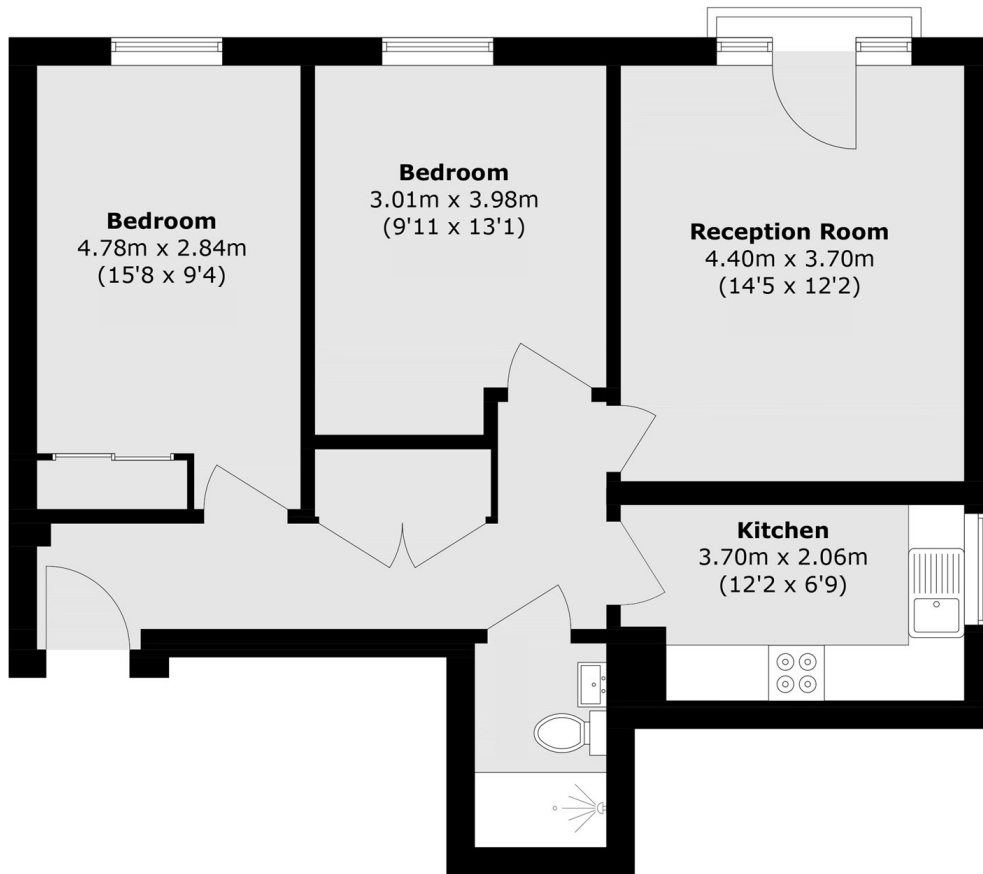
A two double bedroom apartment in the heart of Bow on Campbell Road. This first floor property has been fully refurbished throughout and comes with two equally sized double bedrooms, a separate kitchen and comes furnished.

Situated within a secure entry development nearby local amenities this apartment is also moments from Bow Road underground and Bow Church DLR stations.

Features

- Two Double Bedrooms
- Ample Storage
- Secure Entry System
- 700sq ft.
- First Floor
- Full Refurbishment

Campbell Road, London, E3



Total area (approx.): 67.1 sq. m (722.2 sq. ft)