

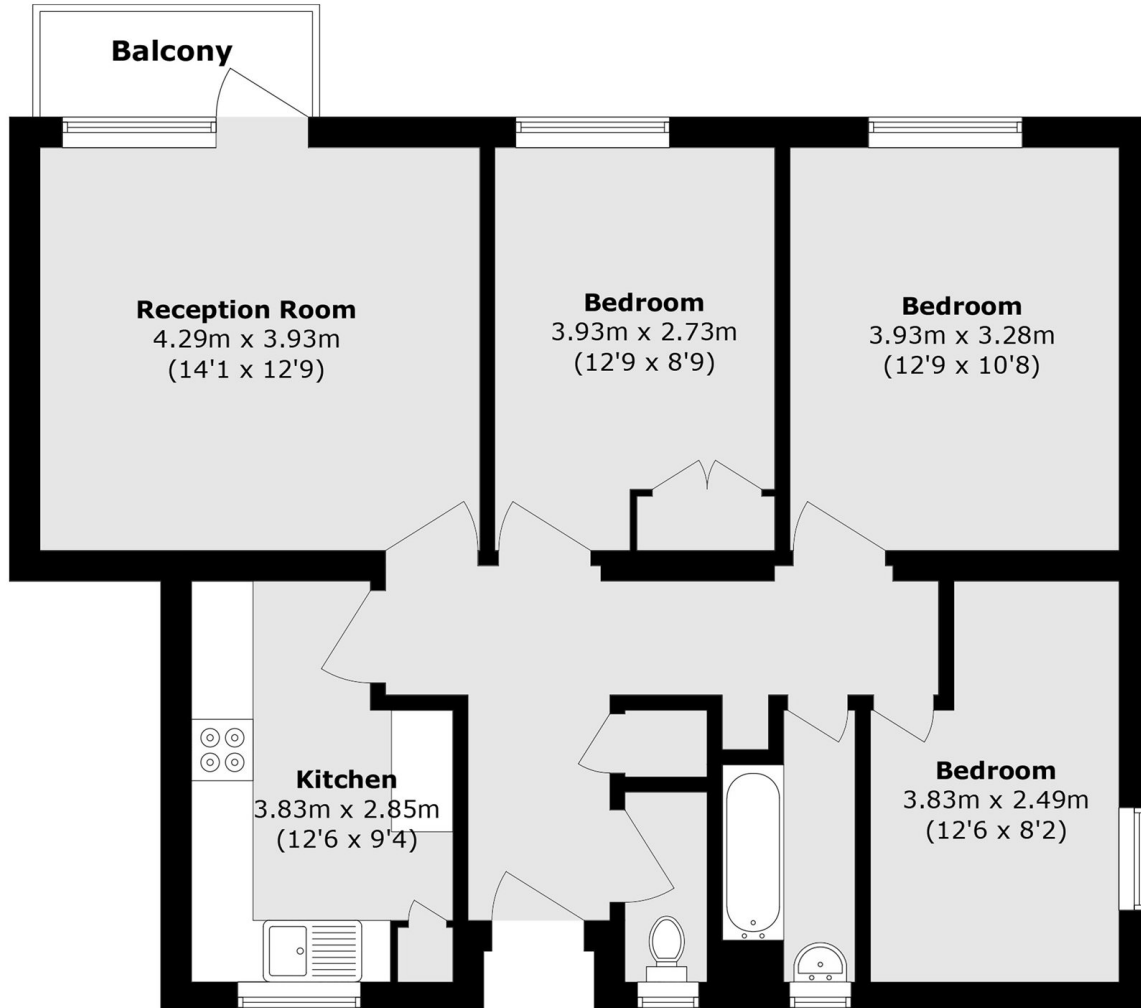


## JUBILEE STREET, E1

£425,000

A well proportioned flat in a secure building with lift access. This home offers three double bedrooms, a generous reception leading to a private balcony and a separate kitchen.

- Three Double Bedrooms
- Chain Free
- Separate Kitchen
- Private Balcony
- Secure Communal Entrance
- Lift Access



Total area (approx.): 78.8 sq. m (848.2 sq. ft)

Balcony area (approx.): 2.7 sq. m (29.1 sq. ft)

**LiFE RESIDENTIAL**

71 Drayton Park, London, N5

1BF

Sales: 020 3838 8666

Lettings: 020 7359 4488

Energy Rating: . We aim to make our particulars both accurate and reliable. However they are not guaranteed; nor do they form part of an offer or contract. If you require clarification on any points then please contact us, especially if you're traveling some distance to view. Please note that appliances and heating systems have not been tested and therefore no warranties can be given as to their good working order.