

# Cheesemans Terrace

West Kensington, London, W14

 LAWSONRUTTER





# Cheesemans Terrace

West Kensington, London, W14

Price Guide: £475,000



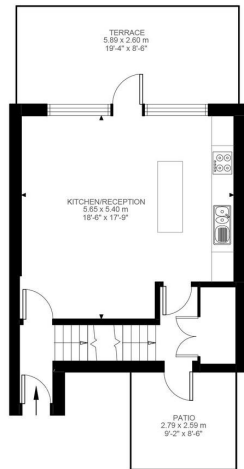
A bright and spacious split level apartment arranged over the upper floors, offering well balanced living accommodation and an abundance of natural light throughout.

The property is presented in decent condition and extends to approximately 830 sq ft, making it a really good size two bedroom home. The main feature is the impressive open plan kitchen and reception room, measuring over 18 ft in width, providing excellent space for both living and dining while benefiting from large windows and direct access onto a private terrace.

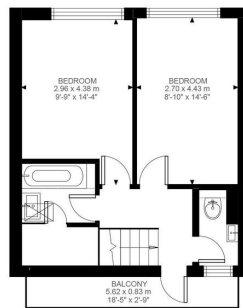
Upstairs, there are two double bedrooms, both well proportioned with good natural light, along with a family bathroom and additional balcony access. The split level layout gives the property a nice sense of separation between the living and sleeping accommodation, making it feel more like a house than a standard apartment.

One of the standout features is the outdoor space, with both a large terrace and an additional balcony, which is quite rare for properties in this price range and location.

Cheesemans Terrace is conveniently located in West Kensington, within easy reach of West Kensington Station, along with the wide range of shops, cafes and amenities found nearby on North End Road and the surrounding area.



Second Floor  
416 ft²



Third Floor  
414 ft²

Cheesemans Terrace, W14  
Approximate Gross Internal Area  
77.11 SQ.M / 830 SQ.FT

Illustration for identification purposes only. Not to scale.  
Floor Plan Drawn According To RICS Guidelines.

No chain | Two double bedrooms | Split level Flat  
Three balconies | 0.2 Miles from West Kensington Station  
Leasehold | 830 Sq. Ft (77.11 Sq. M)

All viewings by appointment through our **West Kensington Office:**

T: 020 7385 5020  
E: westken@lawsonrutter.com

1 Barons Court Road, London  
W14 9DP

[www.lawsonrutter.com](http://www.lawsonrutter.com)

In accordance with the Property Misdescription Act 1991, we wish to emphasise that the information given in these particulars is intended to help you decide whether you wish to view this property. Whilst every care is taken to ensure the accuracy of these particulars please note that all measurements are approximate and we are, for the accuracy of other information, reliant on what the seller has provided. We strongly recommend that you rely on your own inspections and those of your advisors to establish the details of any aspects which are of particular importance. Please note that we have not undertaken any survey of the property or the appliances within it and the buyer must rely on their own investigations prior to exchange of contracts.

