



St. Annes Close, Skegness PE25 1DE

welcome to

St. Annes Close, Skegness

Detached two-bedroom bungalow in a quiet cul-de-sac with long driveway, detached garage, large rear garden, gas central heating and a new boiler. Ideal for downsizers or first-time buyers.

Entrance Hall

Accessed via the side of the property, the front door opens into a welcoming hallway. This central space provides access to all principal rooms,

Lounge

14' 8" x 10' 3" (4.47m x 3.12m)

A good-sized, bright living room with a front-facing window allowing plenty of natural light. Featuring a gas fire as a focal point and a radiator for year-round comfort.

Kitchen

12' 9" x 8' 9" (3.89m x 2.67m)

Fitted with a range of wall, base and drawer units complemented by ample worktop space. There is room for a small dining table, with features including a sink with windows to the front and side elevations. Space and plumbing for a washing machine, an under-counter fridge/freezer and a cooker. The wall-mounted boiler, installed in august 2025 is also neatly positioned within the room as well as the fuse box.

Bedroom One

12' 11" x 9' 5" (3.94m x 2.87m)

A well presented double bedroom with a window to the rear of the property with a radiator and space for wardrobes, drawers and bed side tables.

Bedroom Two

9' 8" x 10' 6" (2.95m x 3.20m)

A comfortable double bedroom positioned to the rear of the property, enjoying plenty of natural light through the window. Complete with a radiator for year-round comfort.

Bathroom

Fitted with a shower cubicle, WC, bidet and hand

wash basin, this well-appointed shower room also benefits from a rear-facing window providing natural light. A radiator ensures comfort and completes this neatly arranged space.

Front Garden

The property benefits from a neatly presented front garden alongside a newly laid resin driveway, providing ample off-road parking.

Rear Garden

A fully enclosed, low-maintenance rear garden, predominantly laid to lawn and bordered by fencing for added privacy. the space also benefits from convenient side gate access, making it both practical and secure.

Garage

18' 1" x 9' 3" (5.51m x 2.82m)

Equipped with an electric uo-and-over door and additional side door providing access to the rear garden, the garage benefits from power and lighting, a fuse box and fitted shelving ideal for storage.





view this property online williamhbrown.co.uk/Property/SKG110162



welcome to

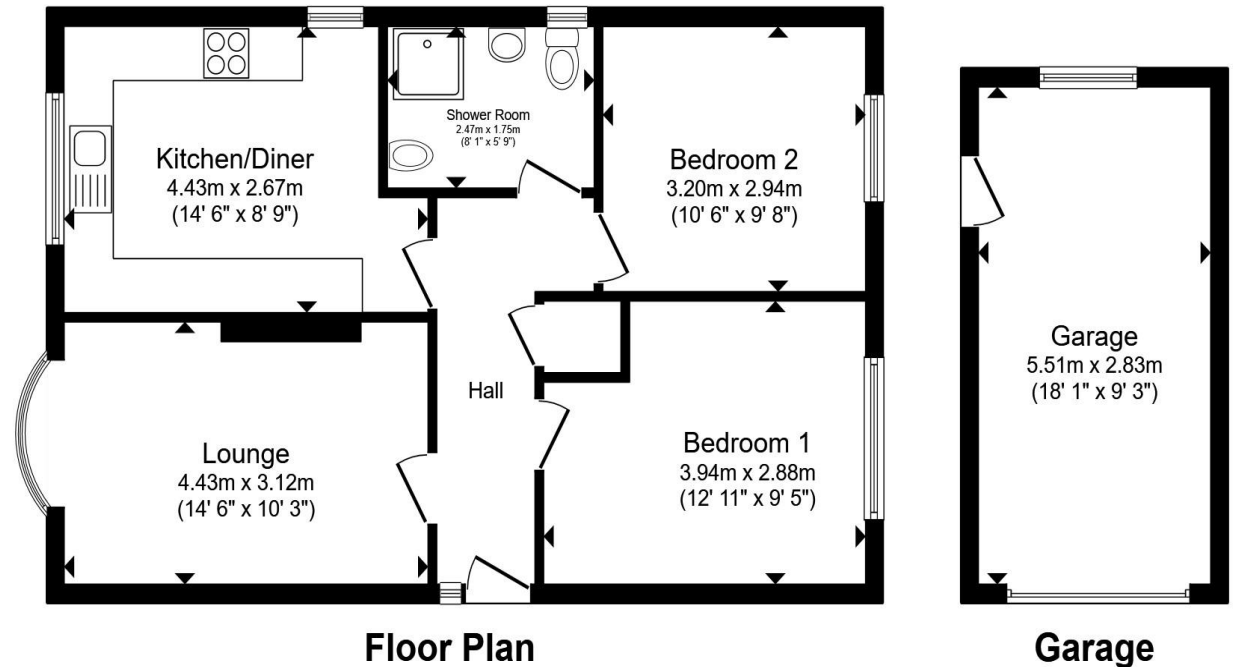
St. Annes Close, Skegness

- Detached 2 bed bungalow
- Detached garage with power
- Large private rear garden
- Gas central heating - recently fitted bungalow
- Quiet cul-de-sac location - sought after area

Tenure: Freehold EPC Rating: D

Council Tax Band: B

£190,000



Total floor area 76.5 m² (823 sq.ft.) approx

This floor plan is for illustrative purposes only. It is not drawn to scale. Any measurements, floor areas (including any total floor area), openings and orientation are approximate. No details are guaranteed, they cannot be relied upon for any purpose and they do not form part of any agreement. No liability is taken for any error, omission or misstatement. A party must rely upon its own inspection(s). Powered by www.propertybox.io



view this property online williamhbrown.co.uk/Property/SKG110162



Property Ref:
SKG110162 - 0003

1. MONEY LAUNDERING REGULATIONS Intending purchasers will be asked to produce identification documentation at a later stage and we would ask for your co-operation in order that there is no delay in agreeing the sale. 2. These particulars do not constitute part or all of an offer or contract. 3. The measurements indicated are supplied for guidance only and as such must be considered incorrect. Potential buyers are advised to recheck measurements before committing to any expense. 4. We have not tested any apparatus, equipment, fixtures or services and it is in the buyers interest to check the working condition of any appliances. 5. Where an EPC, or a Home Report (Scotland only) is held for this property, it is available for inspection at the branch by appointment. If you require a printed version of a Home Report, you will need to pay a reasonable production charge reflecting printing and other costs. 6. We are not able to offer an opinion either written or verbal on the content of these reports and this must be obtained from your legal representative. 7. Whilst we take care in preparing these reports, a buyer should ensure that his/her legal representative confirms as soon as possible all matters relating to title including the extent and boundaries of the property and other important matters before exchange of contracts.

William H Brown is a trading name of Sequence (UK) Limited which is registered in England and Wales under company number 4268443, Registered Office is Cumbria House, 16-20 Hockliffe Street, Leighton Buzzard, Bedfordshire, LU7 1GN. VAT Registration Number is 500 2481 05.


william h brown



01754 768311



Skegness@williamhbrown.co.uk



20 Roman Bank, SKEGNESS, Lincolnshire, PE25 2RU



williamhbrown.co.uk