



Clements estate agents



## The Maltings, Hemel Hempstead, HP2 5JB Offers In Excess Of £250,000

Located in the historic Old Town of Hemel Hempstead, this delightful first-floor flat offers a perfect blend of comfort and convenience. The property boasts two generously sized bedrooms and a well-appointed bathroom, modern kitchen and a reception room that provides ample space for relaxation and entertaining. The property is very well decorated & is a stone's throw away from a variety of shops and amenities, ensuring that everything you need is within easy reach. Viewing Essential!

## COMMUNAL ENTRY DOOR



## LOUNGE AREA



## STAIRS TO FIRST FLOOR

## ENTRANCE PORCH

## ENTRANCE HALLWAY



## DINING AREA



## LOUNGE / DINER 19'9 x 11'11 (6.02m x 3.63m)



## KITCHEN 10'6 x 6'11 (3.20m x 2.11m)



**BEDROOM ONE 13'11 x 10'6 (4.24m x 3.20m)**



**OUTSIDE**



**BEDROOM TWO 8'0 x 8'0 (2.44m x 2.44m)**



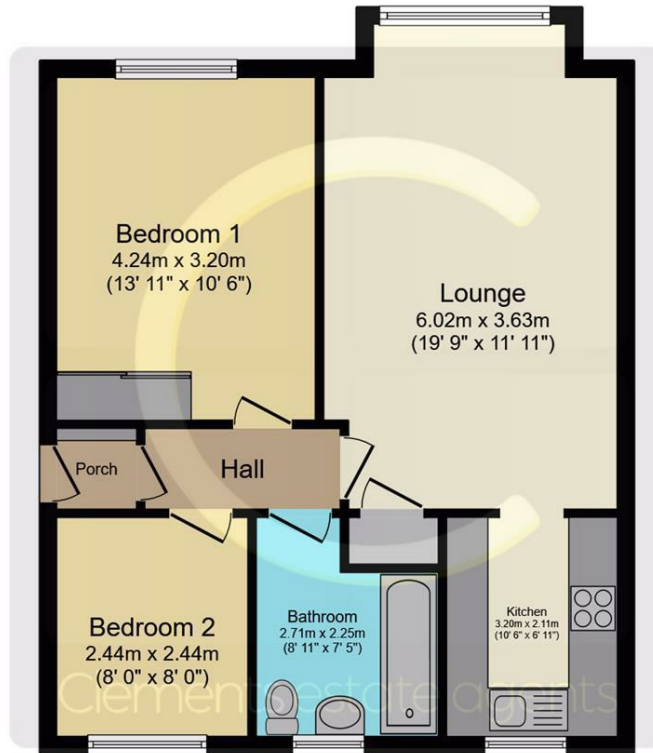
**COMMUNAL GARDENS & PARKING**



**BATHROOM**



# Floor Plan



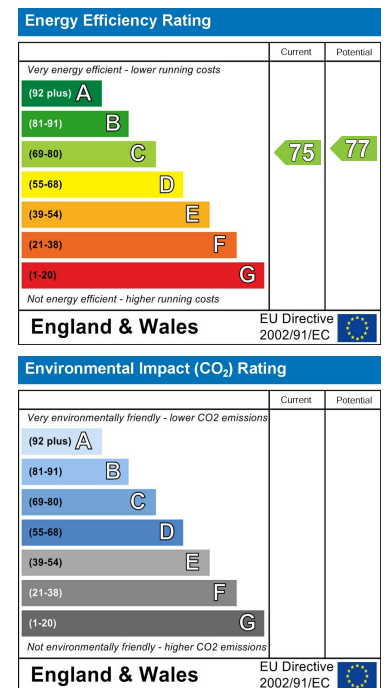
Floor Plan

This floor plan is for illustrative purposes only. It is not drawn to scale. Any measurements, floor areas (including any total floor area), openings and orientations are approximate. No details are guaranteed, they cannot be relied upon for any purpose and do not form any part of any agreement. No liability is taken for any error, omission or misstatement. A party must rely upon its own inspection(s). Powered by www.Propertybox.io

# Area Map



# Energy Efficiency Graph



These particulars, whilst believed to be accurate are set out as a general outline only for guidance and do not constitute any part of an offer or contract. Intending purchasers should not rely on them as statements of representation of fact, but must satisfy themselves by inspection or otherwise as to their accuracy. No person in this firm's employment has the authority to make or give any representation or warranty in respect of the property.