



**Connells**

Primrose Place  
Durrington Salisbury



# Primrose Place Durrington Salisbury SP4 8FE

for sale  
**£270,000**



## Property Description

Location! Location! Location! Suitable for the more discerning buyer, being set amongst executive detached houses, this stylish two bedroom house is very well positioned on this prime development located within access of Salisbury and the A303.

### Entrance Hall

Built in storage cupboard, access to lounge, cloakroom and kitchen.

### Cloakroom

Comprising a WC and pedestal wash hand basin.

### Lounge

Staircase to first floor landing, French doors to garden.

### Kitchen

Comprising a single drainer sink unit with mixer taps, range of wall and base units with roll top work surfaces, built in oven, inset hob unit with hood over, fridge/freezer space, space for washing machine, front aspect.

### Landing

### Master Bedroom

Built in double wardrobe, rear aspect,

### Ensuite

Comprising a shower cubicle with pedestal wash hand basin and WC.

### Bedroom Two

Front aspect, built in airing cupboard.

### Bathroom

Comprising a panel enclosed bath, pedestal wash hand basin and WC.

### Outside

### Rear Garden

Mainly laid to lawn with patio area.

### Double Width Driveway

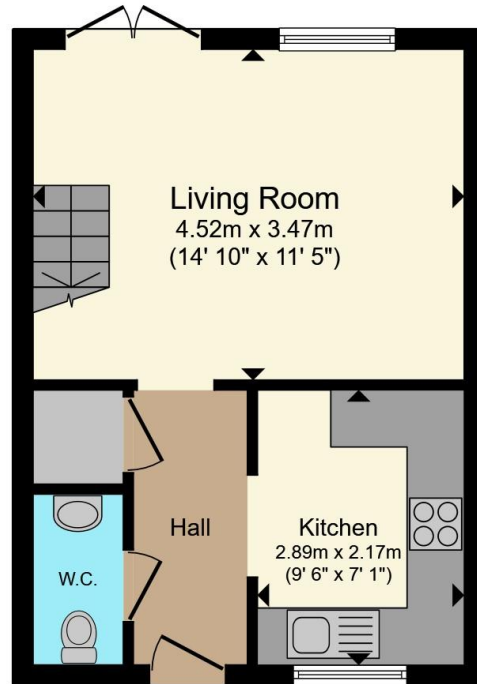




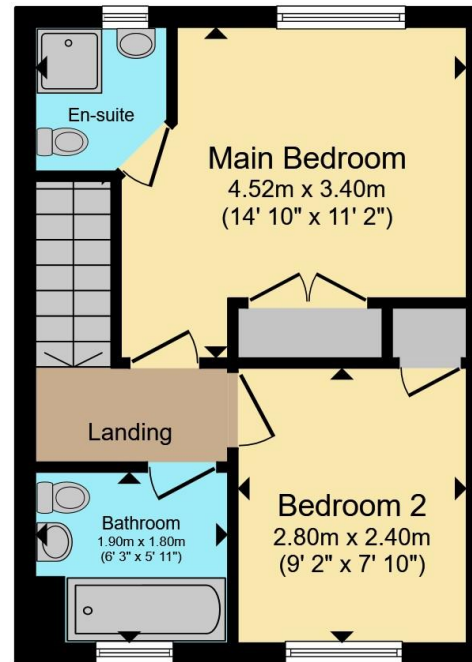








**Ground Floor**



**First Floor**

Total floor area 58.5 m<sup>2</sup> (629 sq.ft.) approx

This floor plan is for illustrative purposes only. It is not drawn to scale. Any measurements, floor areas (including any total floor area), openings and orientation are approximate. No details are guaranteed, they cannot be relied upon for any purpose and they do not form part of any agreement. No liability is taken for any error, omission or misstatement. A party must rely upon its own inspection(s). Powered by [www.propertybox.io](http://www.propertybox.io)

**Connells**

To view this property please contact Connells on

**T 01980 622 662**  
**E [amesbury@connells.co.uk](mailto:amesbury@connells.co.uk)**

Unit 3 23 Salisbury Street AMESBURY  
SALISBURY SP4 7AW

EPC Rating: C Council Tax  
Band: C

Tenure: Freehold

**view this property online [connells.co.uk/Property/ABY308580](http://connells.co.uk/Property/ABY308580)**



1. MONEY LAUNDERING REGULATIONS Intending purchasers will be asked to produce identification documentation at a later stage and we would ask for your co-operation in order that there will be no delay in agreeing the sale. 2. These particulars do not constitute part or all of an offer or contract. 3. The measurements indicated are supplied for guidance only and as such must be considered incorrect. Potential buyers are advised to recheck measurements before committing to any expense. 4. We have not tested any apparatus, equipment, fixtures, fittings or services and it is in the buyers interest to check the working condition of any appliances.

Connells Residential is registered in England and Wales under company number 1489613, Registered Office is Cumbria House, 16-20 Hockliffe Street, Leighton Buzzard, Bedfordshire, LU7 1GN. VAT Registration Number is 500 2481 05.

**See all our properties at [www.connells.co.uk](http://www.connells.co.uk) | [www.rightmove.co.uk](http://www.rightmove.co.uk) | [www.zoopla.co.uk](http://www.zoopla.co.uk)**

Property Ref: ABY308580 - 0003