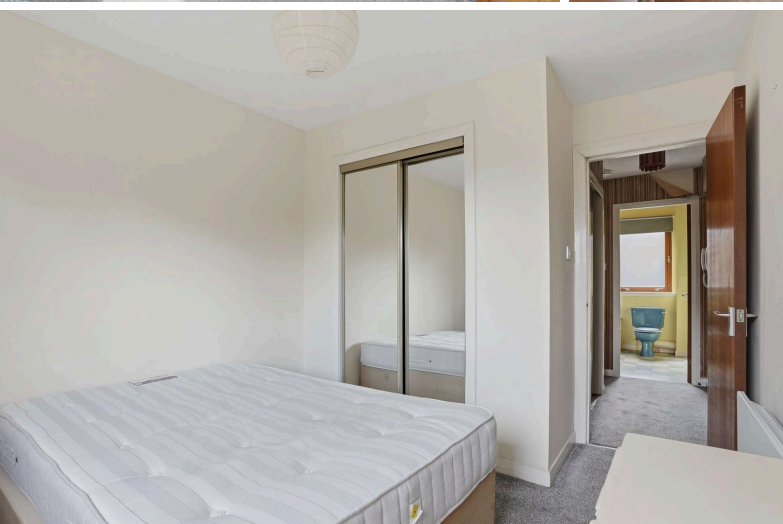
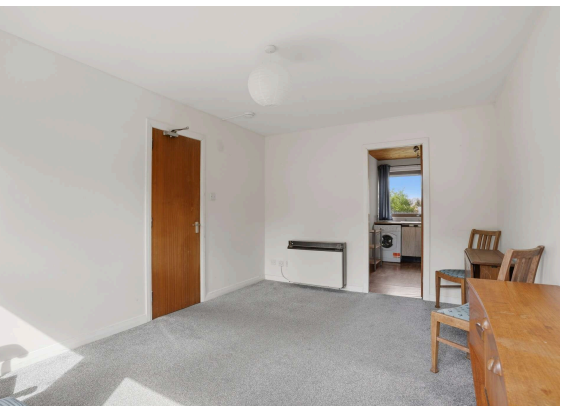
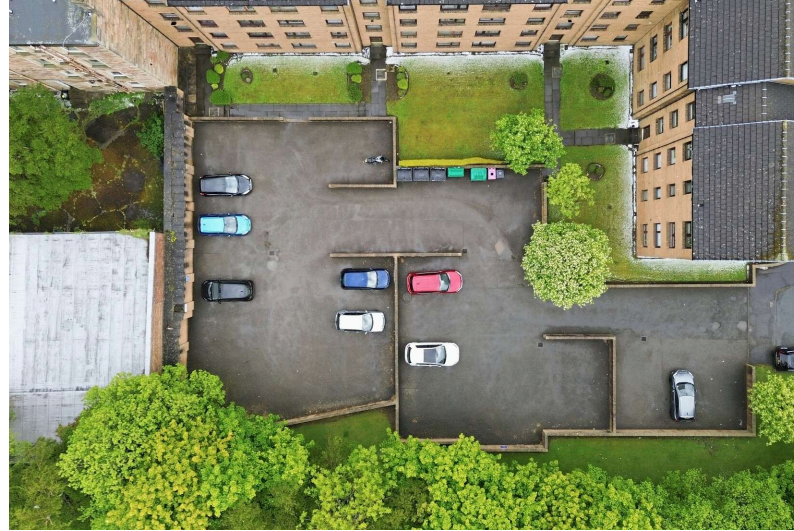




8/5 Craighouse Gardens
Edinburgh, EH10 5TX

- Desirable Morningside location
- Bright, one-bedroom apartment
- Beautiful landscaped grounds
- Ideal for first time buyers and investors
- EPC: C
- Council tax band: C





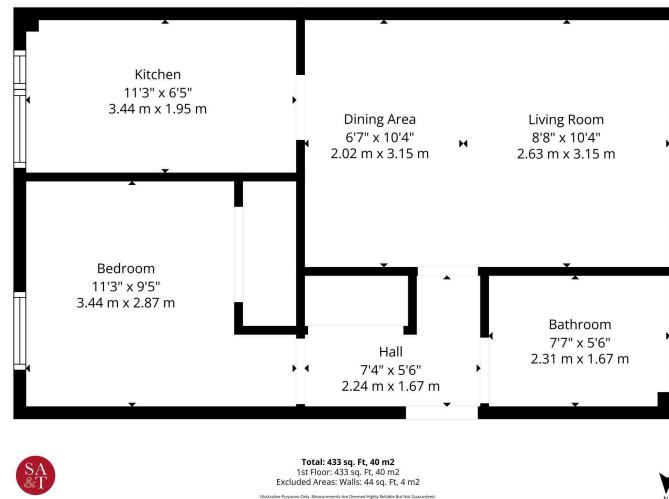
8/5 Craighouse Gardens is a second-floor one-bedroom apartment set within beautifully landscaped gardens in the highly sought-after Morningside area of Edinburgh. The property offers a fantastic opportunity for those looking to create a home to their own taste, with scope for modernisation and improvement throughout. Featuring electric heating and double glazing, the apartment provides a comfortable living environment, while its layout allows for easy updating of the kitchen and bathroom to suit contemporary styles.

This apartment is ideally suited for first-time buyers looking to personalise their home or investors seeking a "buy to let" opportunity with potential to add value. To the rear of the building, there is convenient access to residents' parking.

The accommodation comprises: A welcoming hallway with a deep storage cupboard, a bright living room, and a kitchen with base and wall-mounted units offering scope for modernisation. The double bedroom features a built-in mirrored wardrobe, and the apartment is completed by a family bathroom with a three-piece suite, providing an excellent opportunity to update to contemporary tastes.

Location:

Craighouse Gardens is situated in the established residential area of Morningside which is one of Edinburgh's most sought after and prestigious areas. Located to the south of the city, it has a thriving community with a broad range of local amenities which include a wide selection of everyday shops, doctor's surgery, dentists, pharmacies, a bank, restaurants, artisan shops, delis and trendy pavement cafes with further facilities including a Waitrose Supermarket. Morningside also has an excellent library which is well used by the local residents. The nearby Braid and Pentland Hills offer many pleasant recreational pursuits for walkers and cyclists and there are also a number of excellent golf courses and easy access to Hillend Ski-slope. Excellent local public and private schools are within the vicinity at nursery, primary and secondary levels. Edinburgh's city by-pass is situated nearby providing links to the main motorway network, Edinburgh Airport, East and West Lothian. There is also a good bus service to Edinburgh City Centre and to surrounding areas.



Whilst these particulars are believed to be correct their accuracy is not guaranteed

For up to date price & viewing details, please contact Sturrock, Armstrong & Thomson or visit www.satsolicitors.co.uk



STURROCK ARMSTRONG & THOMSON
SOLICITORS & ESTATE AGENTS

7a Dundas Street
Edinburgh EH3 6QG
Telephone: 0 131-225 4082
Fax: 0 131-556 2079
Email: property@satsolicitors.co.uk
www.satsolicitors.co.uk

