



Morris Road, TW7

£525,000

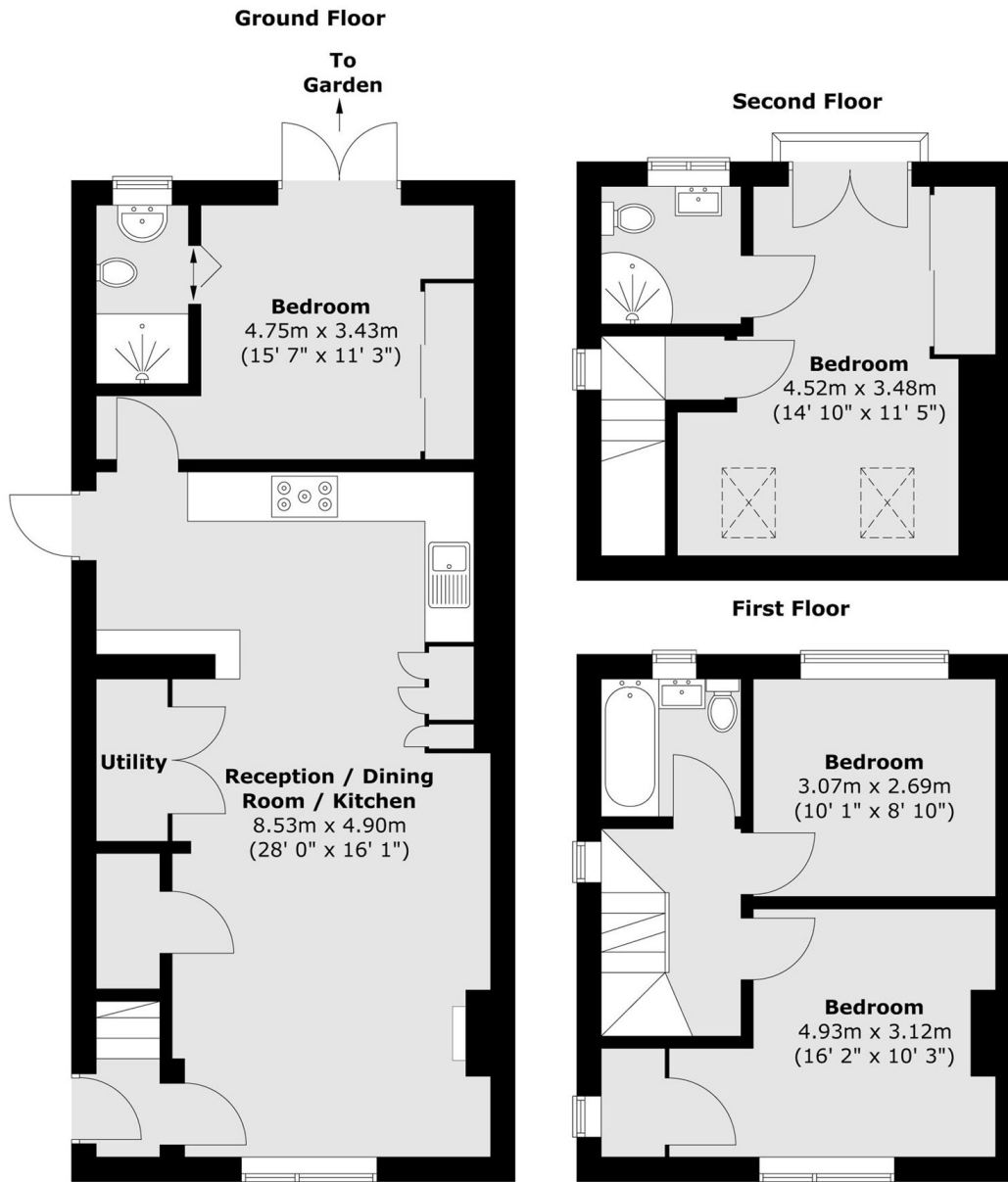
A fully extended four bedroom end of terrace family home. Recently renovated and extended, the property comprises of four double bedrooms, two en-suite bathrooms, and a brand new family bathroom. Further benefits include off street parking, large private garden, side access and is chain free.

Conveniently situated close to local amenities including shops, parks and transport links. Both Isleworth (Southwestern) and Hounslow East (Piccadilly line) stations are nearby with excellent links to Central London and Heathrow Airport. Neighbouring areas of Twickenham, St Margarets and Richmond are also within easy reach.

Features

- Driveway for Multiple Cars
- No Onward Chain
- Recently Refurbished
- End of Terrace
- Three Bathrooms
- Side Access

Morris Road,
Isleworth, TW7



Total area (approx.) : 106 sq. m (1141 sq. ft)
Total balcony area (approx.) : 0.5 sq. m (5 sq. ft)