



Dan Thomas
— & Co. —



Jepson Drive, Dartford

Dartford

Offers in the Region of
£500,000

Tenure: Leasehold

Bedrooms: 4 | **Bathrooms:** 3 | **Receptions:** 1

A stunning four bedroom townhouse, located in a sought-after development, on the Dartford/Greenhithe Borders.

Nestled within a secure, gated complex on the former Stonehouse Hospital grounds in Dartford, this beautifully presented four-bedroom townhouse offers a perfect blend of style, space, and convenience.

Situated close to the amenities of Dartford and Greenhithe, and just minutes from Bluewater Shopping Centre, this home also boasts superb connectivity with easy access to the A2 and M25.

The property offers a driveway for two, with additional visitor parking nearby.

Arranged over three spacious floors and finished to a high specification throughout, this contemporary home is ideal for modern, family living. The ground floor features a sleek, fully equipped kitchen and a generous open-plan sitting/dining room with direct access to the garden – perfect for entertaining. A convenient guest cloakroom completes this level.

The first floor offers three well-proportioned bedrooms, including a stylish family bathroom and an en-suite to the largest room.

The top floor boasts a luxurious principal bedroom suite with its own shower room, a separate laundry/utility room, and additional storage. This property is offered on a leasehold basis with approximately 236 years remaining, providing long-term peace of mind for any prospective buyer. Current leaseholders are looking to purchase the freehold, from the Freeholder - which will reduce ground rent to nil.

Whether you're upsizing, relocating, or seeking a well-appointed family home close to excellent amenities and transport links, this superb townhouse is not to be missed. Contact us today to arrange your viewing.

Tenure: Leasehold

Lease: Approx 236 Years Remaining

Service Charge: £828 per annum

Ground Rent: £330 per annum

Council Tax Band: E





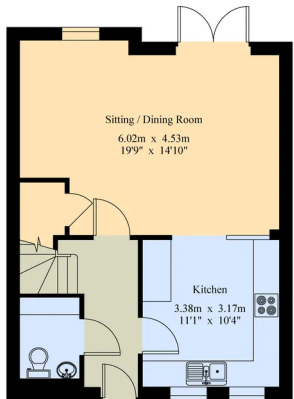




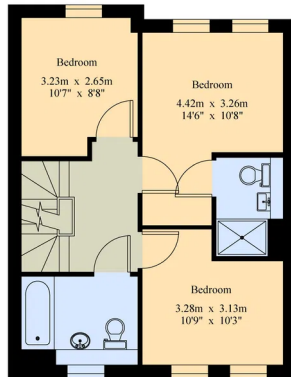


Jepson Drive

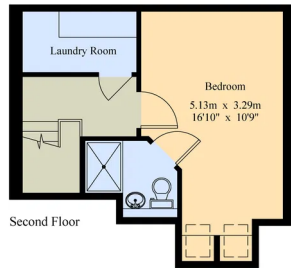
Gross Internal Area : 123.4 sq.m (1328 sq.ft.)



Ground Floor



First Floor



Second Floor



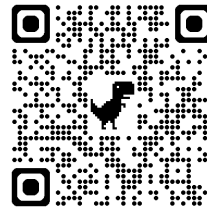
For Identification Purposes Only.
© 2025 Truplan (UK) Limited (01892)614 881

Score	Energy rating	Current	Potential
92+	A		
81-91	B	83 B	86 B
69-80	C		
55-68	D		
39-54	E		
21-38	F		
1-20	G		



Dan Thomas & Co
8A Station Road
Longfield
Kent
DA3 7QD

Dan Thomas & Co Ltd. Registered in England and Wales - 12734131
Registered Office: 8A Station Road, Longfield, Kent, DA3 7QD



T: 01474 636300
E: info@danthomasandco.co.uk
www.danthomasandco.co.uk