



India Way, W12

£430,000

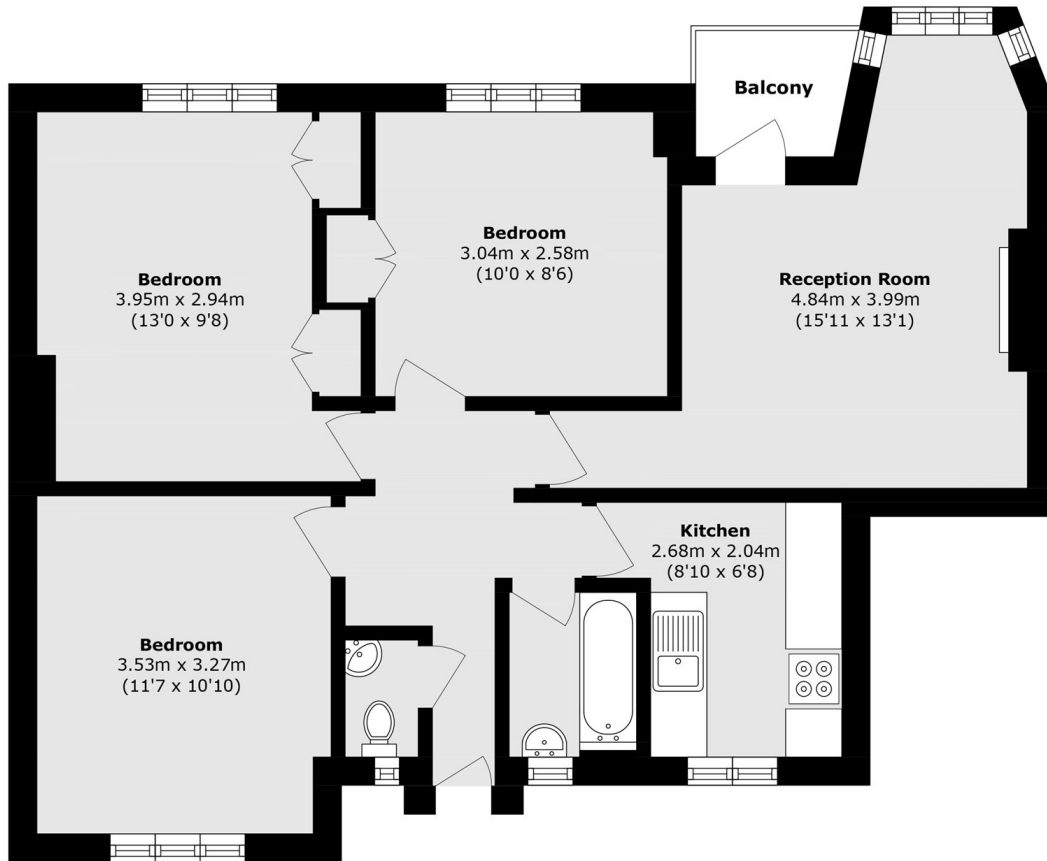
Three-bedroom purpose-built flat located on the edge of the White City Estate. An ideal first home or investment opportunity, the property benefits from a private balcony, spacious enough for a table and chairs perfect for outdoor dining or relaxing in the sun.

Cornwallis House is located close to Westfield White City, BBC Centre, numerous shops, restaurants and bars. Sainsbury's and Wormholt Park less than a mile away. It is ideally located, providing easy access to the A40 and transport into Central London. Transport links are excellent. Central and Hammersmith & City Line tubes.

Features

- Three Double Bedrooms
- Private Balcony
- No Onward Chain
- Updated Electrics
- Secure Entry
- Westfields Shopping Centre

India Way, London, W12



Total area (approx.): 69.3 sq. m (745.9 sq. ft)

Balcony area (approx.): 2.4 sq. m (25.8 sq. ft)